

Before you break ground, contact your local electric utility for planting limitations at your site.

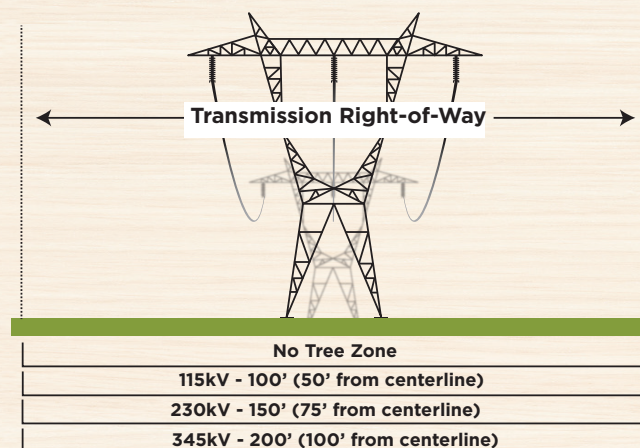


## Plant the right tree in the right place

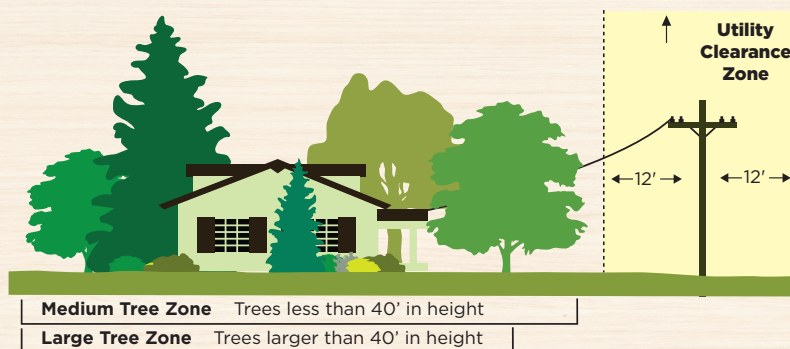
Planting tall-growing trees under and near overhead power lines eventually requires your utility to prune them to maintain safe clearance from the wires. This pruning may result in the tree having an unnatural appearance, a shortened life span, and making it more susceptible to insects and disease.

Proper selection and placement of trees in and around overhead power lines can eliminate potential public safety hazards, reduce expenses for utilities and their rate payers, and improve the appearance of landscapes. For a FREE Energy Landscaping brochure, visit [nppd.com/treeprogram](http://nppd.com/treeprogram).

### High-Voltage Transmission Lines



### Distribution Lines



For further information on tree planting, pruning, removal or replacement, please contact us at

**1-877-275-6773**

To learn more about NPPD's vegetation management program, visit [nppd.com/treeprogram](http://nppd.com/treeprogram)



Tree Line USA.

Nebraska Public Power District is a member in good standing of the Tree Line USA® program.

The Tree Line USA® program is sponsored by The National Arbor Day Foundation™ in cooperation with the National Association of State Foresters and recognizes public and private utilities across the nation who demonstrate practices that protect and enhance America's urban and rural trees.

Following the August 14, 2003 east coast blackout, the North American Electric Reliability Council (NERC) set forth Federal requirements regarding the co-existence of trees and power lines. NPPD's membership in the Tree Line USA program provides an avenue to train employees and help promote to our customers the safety and reliability of power lines through the initiation and implementation of public education programs on the proper planting of trees and vegetation.



**Nebraska Public Power District**  
*Always there when you need us*

C19F85D9

1414 15th Street, PO Box 499  
Columbus, NE, 68602-0499



## Electric System Reliability

Tree Planting, Pruning, and Removal Near Overhead Power Lines



Nebraska Public Power District

Trees coming in contact with power lines are one of the leading causes of power outages.



# Look before you leaf

Here are some important safety tips you can't afford to leave behind when you work outdoors:

- Property owners should never attempt to trim or remove tree limbs near power lines. If you are concerned about a tree that may be too close to a power line, contact NPPD at 1-877-275-6773, or your local electric utility.
- When using a ladder or pruning tool, look up and look out for overhead power lines.
- Stay away from trees with overhead power lines running through them.
- Never touch a tree that's in contact with a power line.



No aspect of NPPD's operations is more important than the safety of our customers and our employees.

## Call before you dig

Dial 811, the toll-free number of Nebraska 811. The service will contact member utilities who will mark the location of underground facilities at no charge.



Keeping trees healthy and beautiful and providing safe, reliable electric service are important to Nebraska Public Power District and our customers.



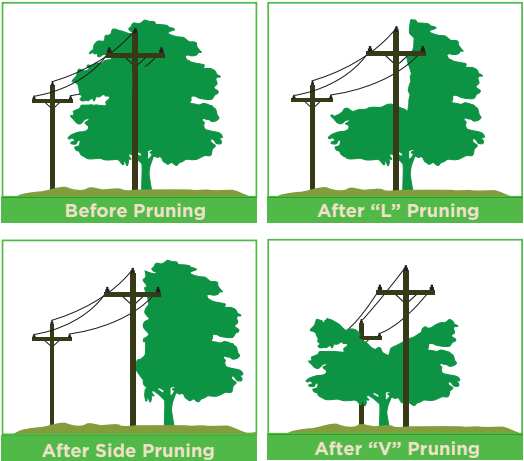
Professional contractors for tree pruning and removal work may be hired by NPPD. All contractors representing NPPD are required to follow our guidelines.

The illustrations below show how your tree might look after it's been properly pruned. We realize pruning trees for line clearance does not always improve their appearance, but current pruning methods are healthier than older obsolete "topping" or "shaping" trimming methods and provide necessary line clearance for reliability and safety.

## Pruning guidelines

For our distribution system (lower voltage) lines, NPPD adheres to tree pruning practices set forth in the American National Standards Institute (ANSI) A300, Standard Practices for Trees, Shrubs and Other Woody Plant Maintenance, which is endorsed by the National Arbor Day Foundation, the International Society of Arboriculture, and the Tree Care Industry Association. This standard allows the use of natural trimming where branches are pruned back to the natural point of growth in the crown, making the least damaging cut, reducing the chance of insect and disease damage and promoting a healthier regrowth of branches away from power lines.

### What your tree might look like after it's been properly pruned



## Frequently Asked Questions

### My trees haven't caused a problem recently so why trim them?

By being proactive we can reduce the frequency and duration of tree related outages while providing for the safety of our customers, their property and our crews.

### Will I be charged for work done on my property?

No. As part of NPPD's regular tree maintenance program, we will trim trees within 12 feet of a power line. In such cases, cleanup of debris is at no cost to the customer.

### Will I be notified of work in advance?

You will be notified in advance, when possible. In the event of storms or other emergencies, advance notice may not occur.

### When will crews arrive?

NPPD crews or hired professional contractors will usually start within two to three weeks after notification and may be in your area for several months to complete the necessary work.

### What is the practice on removal of debris?

Crews remove tree debris created during regular pruning maintenance. You may request to keep all or a portion of the wood. Wood will be cut in lengths, as necessary, to facilitate handling. Stumps will be cut as close to the ground as practical and treated with an approved herbicide, but they will not be removed.

### Will NPPD trim or remove trees near a home's service line?

NPPD or contractor will trim to a 3-foot radius or greater around the service drop. For additional trimming or removal, NPPD will assist by trimming the tree a safe distance from the line and will drop the service line to provide a safe space to trim or remove trees, but the customer is responsible for tree removal and cleanup.