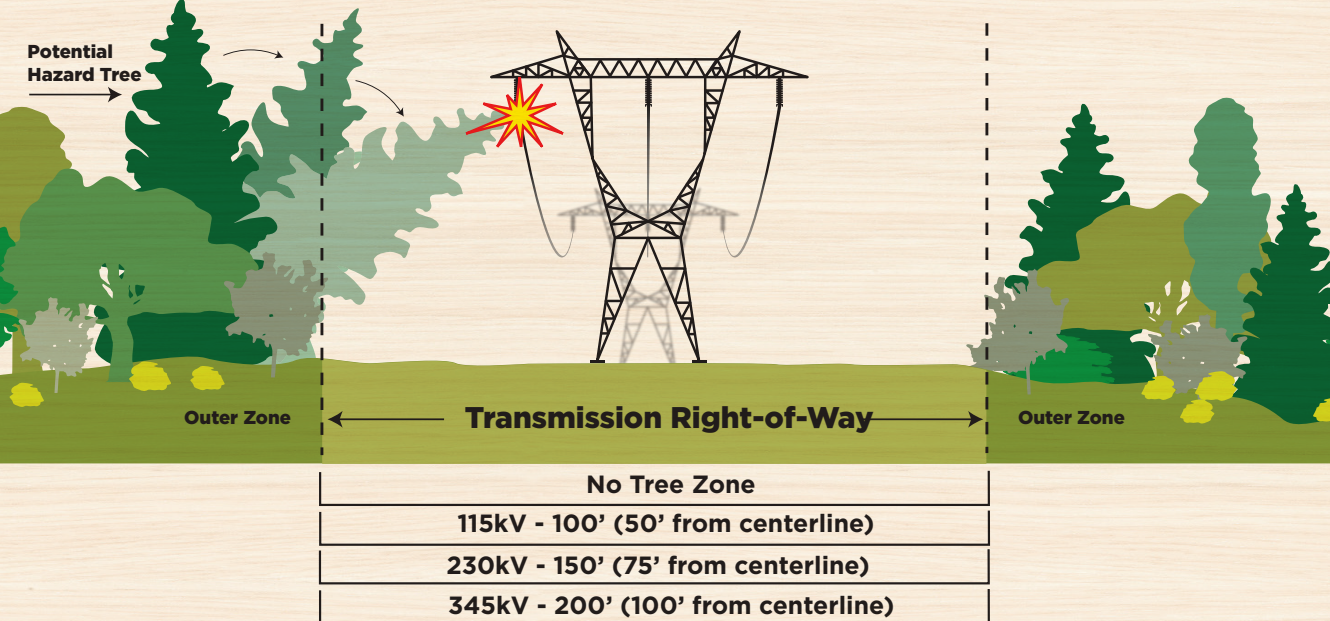


Adequate clearances in transmission rights-of-way must be maintained to ensure reliable and safe electric service.



Transmission right-of-way vegetation zones



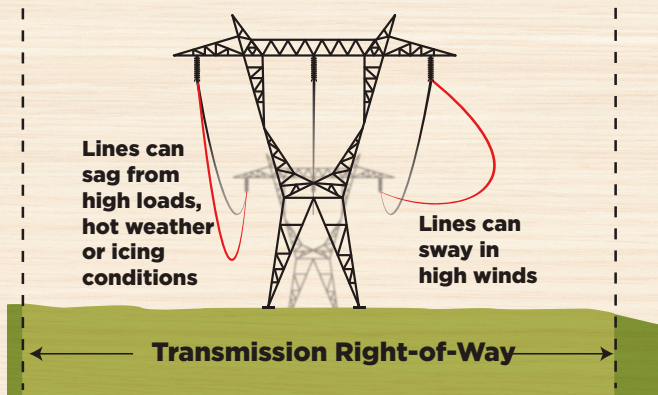
NPPD's vegetation management practices today include the following activities:

Right-of-Way

- Remove all trees, regardless of height, to edge of the right-of-way.
- Remove woody invasive species and other brush that may impede access for maintenance crews.
- Apply herbicides to minimize regrowth.

Outer Zone

- Trim or remove dead, dying, diseased or leaning trees that threaten the safe and reliable operation of the transmission system.



Combined movement of trees and lines during routine winds, and sagging of lines due to heavy electric load, elevated temperatures or icing requires NPPD to remove all vegetation in transmission rights-of-ways.



Tree Line USA.

Nebraska Public Power District is a member in good standing of the Tree Line USA® program.

NPPD adheres to tree pruning practices set forth in the American National Standards Institute (ANSI) A300, Standard Practices for Trees, Shrubs and Other Woody Plant Maintenance, which is endorsed by the National Arbor Day Foundation, the International Society of Arboriculture, and the Tree Care Industry Association.

If you have a question or concern about NPPD's transmission right-of-way vegetation management program, please contact us at

1-877-275-6773

For more information about NPPD's transmission right-of-way vegetation management, visit

nppd.com/treeprogram



Nebraska Public Power District

Always there when you need us

1414 15th Street, PO Box 499
Columbus, NE, 68602-0499



Electric System Reliability

Transmission Right-of-Way Vegetation Management

NPPD patrols more than 5,000 miles of transmission lines year around.



A balanced approach

Nebraska Public Power District has a deep and long-standing respect for our natural environment. The vegetation management program balances a customer's need for reliable energy with respect for the environment. Our goals are to:

- Comply with all applicable laws and federal requirements
- Keep the state's electric grid safe and reliable
- Minimize adverse environmental impacts
- Manage vegetation safely and economically
- Keep customers informed about activities near or on their property
- Respect property owner's rights
- Encourage the safe planting of compatible trees



NPPD values its relationships with customers and property owners.



To ensure reliable service to our customers, Nebraska Public Power District has developed a comprehensive program to manage vegetation around power lines.



Compliance with federal requirements

The Northeast Blackout of 2003 cut power to approximately 55 million people in eight states and Canada. A tree coming into contact with a transmission line contributed to that massive outage.

After the blackout, new federal requirements with substantial penalties for noncompliance were created to ensure the reliability of the nation's high-voltage electrical grid. These requirements mandate that minimum clearance

distances between transmission lines and the nearest vegetation must be established by each utility. NPPD's policies ensure that we are in compliance with federal requirements.

To conform to standards, NPPD has made it a policy to remove trees and other woody-stemmed vegetation within the transmission line right-of-way as well as tall-growing trees located outside the right-of-way that could interfere with the continuous safe operation of the transmission system. In many cases, this means removing trees in areas where they may have been only trimmed in the past.

Working with property owners

While NPPD goes to great lengths to work with our customers, there are times when a property owner may disagree with us on a specific issue. If that happens, we will work diligently to resolve the problem and reach a mutually agreeable solution.

General policies

Safety — Property owners should never attempt to trim or remove tree limbs near power lines. If you are concerned about a tree that may be too close to a power line, contact NPPD at 1-877-275-6773, or your local electric utility.

Work Planning/Notification — Property owners will be notified in advance of work to be performed. In the event of storms or other emergencies, advance notice may not occur.

Tree Removal — NPPD's vegetation management program emphasizes tree removal to promote long-term vegetation control and minimize the cost of future maintenance.

Vegetation Clearing — NPPD uses manual and mechanized clearing of trees as well as utilization of herbicides for managing low-growth vegetation.

Herbicide Application — NPPD uses herbicides registered by the U.S. Environmental Protection Agency and the appropriate state regulatory agency. Herbicides are applied by trained and certified applicators.

Debris Cleanup — NPPD will work with landowners to make arrangements for the disposal of brush and wood. Stumps will be cut as close to the ground as practical and treated with an approved herbicide, but will not be removed.

Nebraska's public power system is reliable due to proactive maintenance.

