

Welcome

Norfolk-Stanton North Project Public Hearing

December 2023



Who We Are

Nebraska Public Power District is the state's largest electric generating utility and has been providing dependable and affordable electricity for more than half a century. NPPD currently serves all or parts of 84 of the state's 93 counties.

- Governed by an elected 11-member Board of Directors
- Serves both retail and wholesale customers
- Over 62% of Nebraska customer-generation resources are carbon-free
- Utilizes a diverse mix of generation resources including:



Coal



Wind



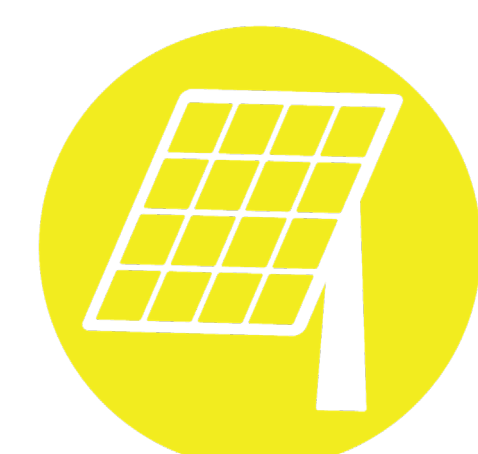
Nuclear



Diesel/other



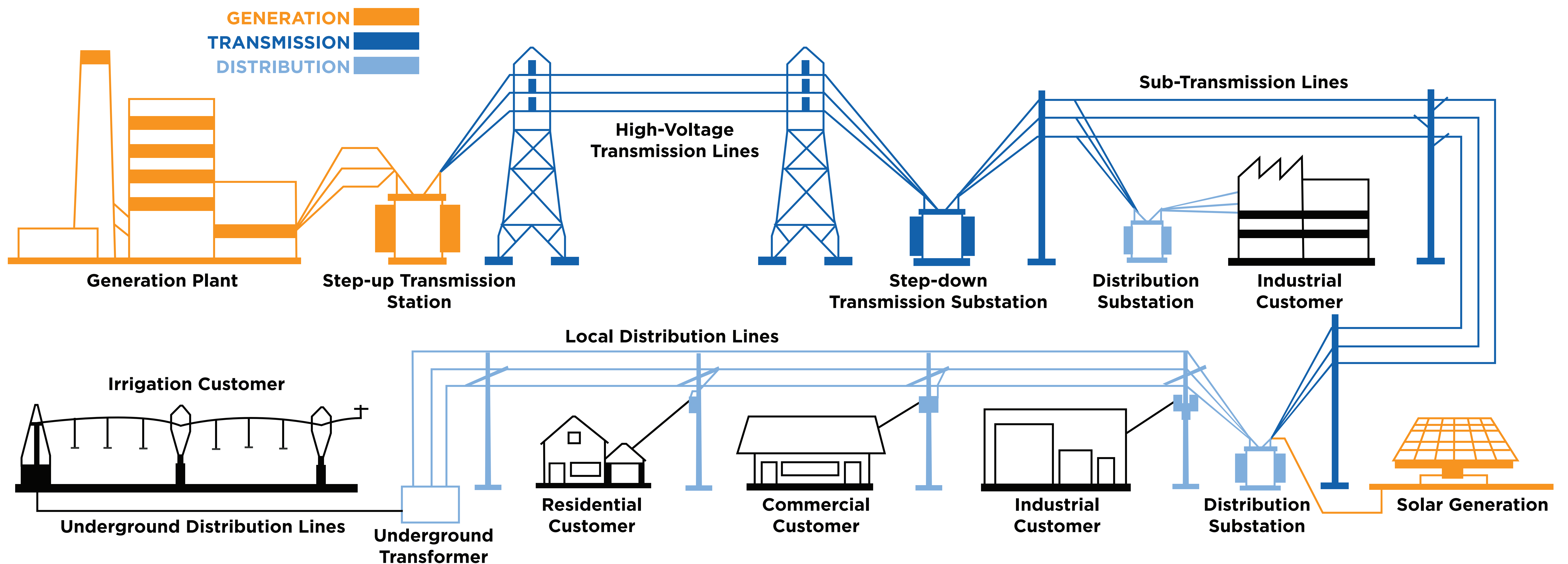
Hydroelectric



Solar



The Path of Electricity

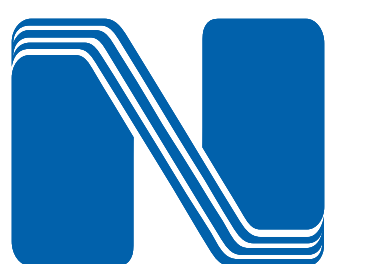
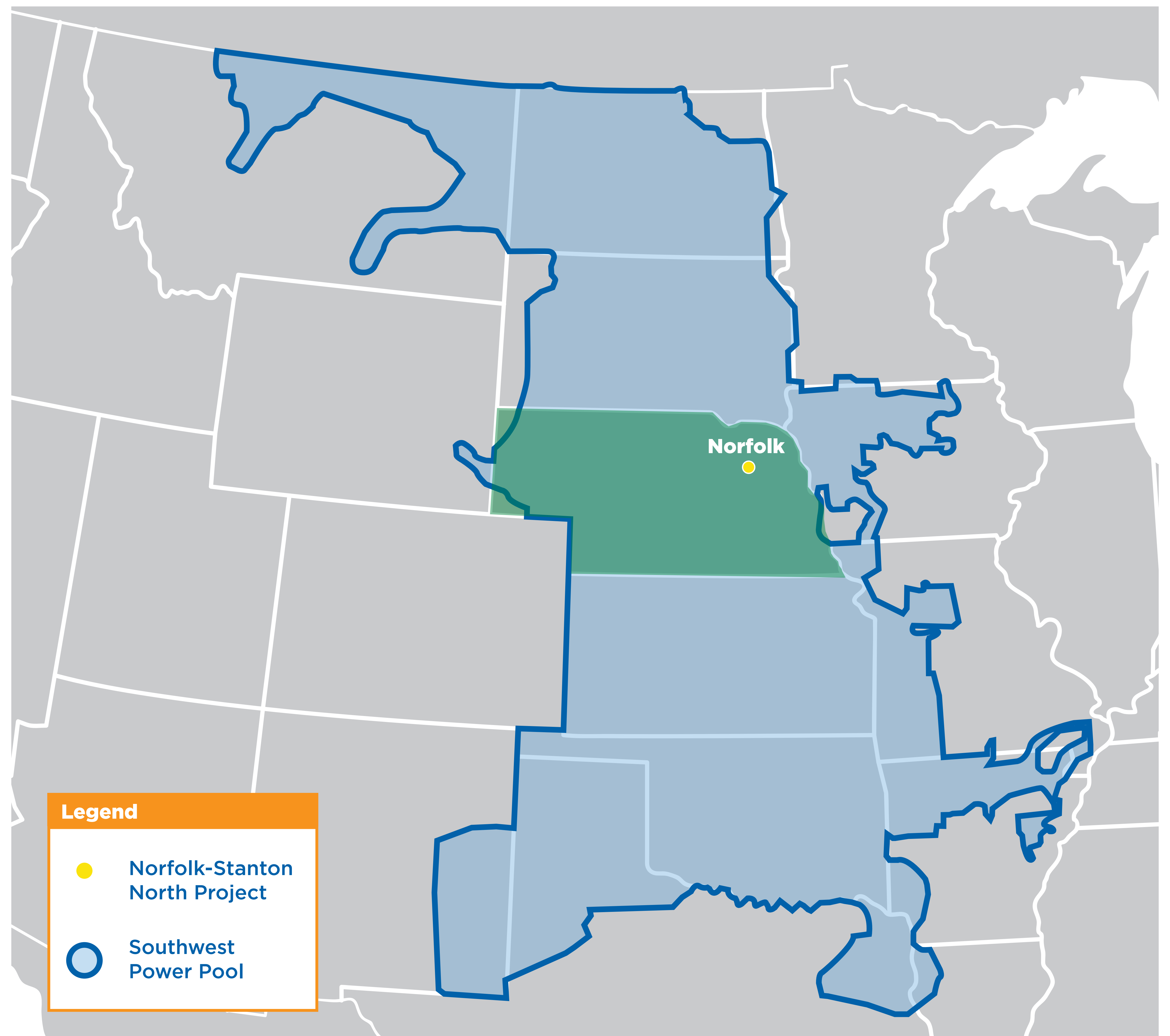


From the power plant, electric energy is delivered through a series of lines and substations where the voltage is reduced to the proper level for end-use customers.



Southwest Power Pool

NPPD has been a member of the Southwest Power Pool (SPP) since April 2009. The SPP's primary focus is to ensure reliable power supplies, adequate transmission infrastructure, and competitive wholesale electricity prices. This project will help to strengthen the SPP electric system in locations where load use and projected growth is reaching critical levels.



Project Description

With the Norfolk-Stanton North Project, NPPD plans to build an approximately eight-mile, 115 kV transmission line to provide a necessary path between a substation east of Norfolk and a substation northwest of Stanton.



The new line will increase the system's transmission capacity to meet increasing demand and further enhance reliability and resiliency in the Stanton, Cuming, and Burt County areas.



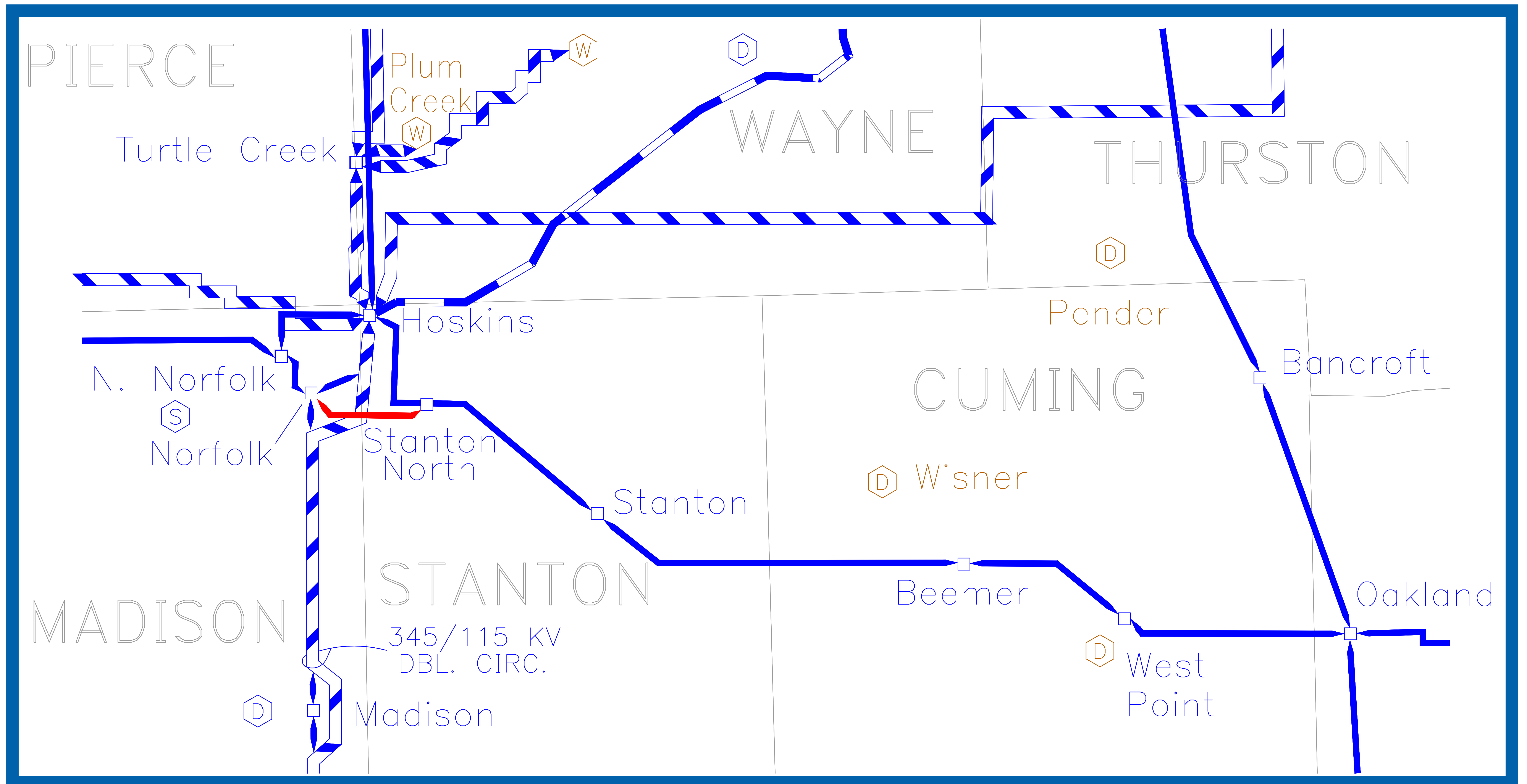
Purpose & Need

The electric load in the Stanton, Cuming, and Burt County areas continues to grow, and the existing 115 kV transmission system is facing high electrical demand. In

exploring several different options, NPPD and SPP determined a 115 kV transmission line from the Norfolk substation on the east side of Norfolk to the Stanton North substation northwest of Stanton will accommodate current and projected future loads. The new line will provide additional reliability and enhanced resiliency.



Transmission System



LEGEND

LINES

	NPPD	OTHER	FUTURE
345 KV			
230 KV			
161 KV			
115 KV			

SUBSTATIONS

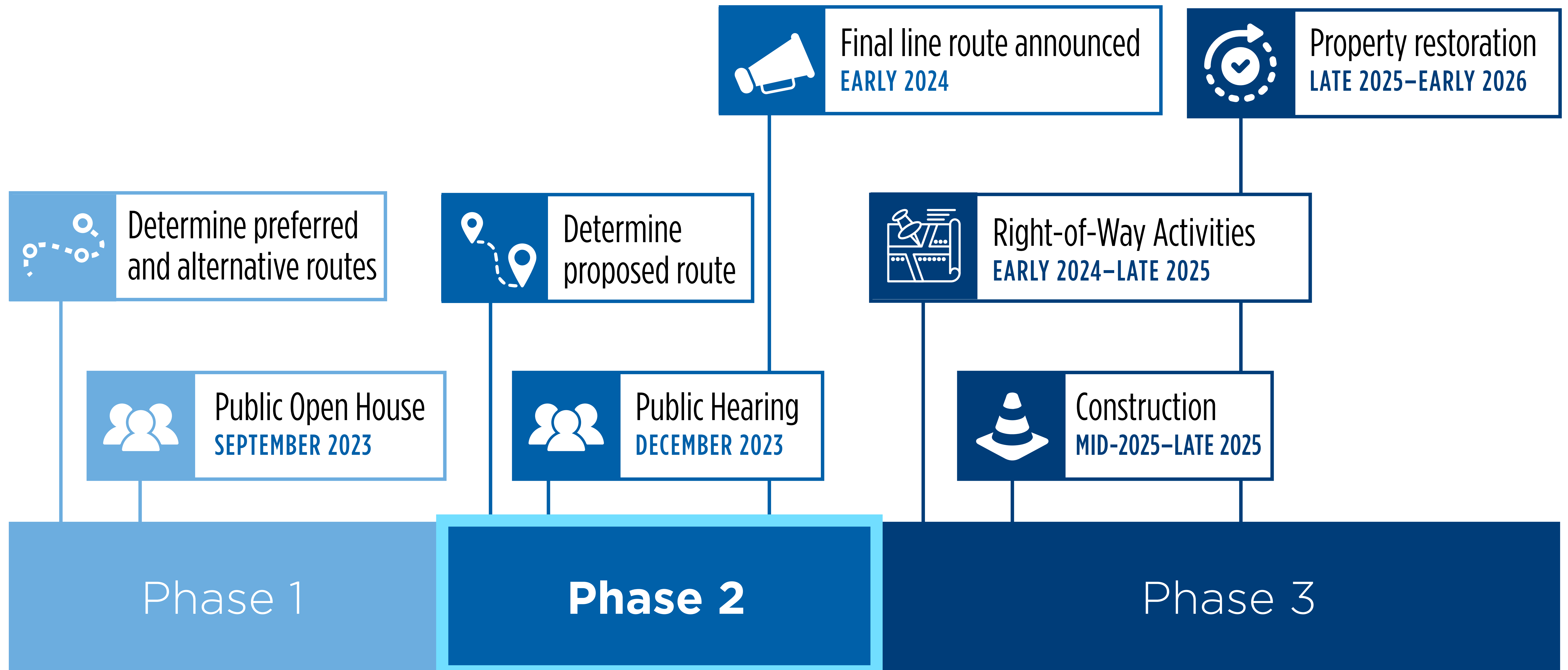
NPPD	OTHER	FUTURE

POWER PLANTS

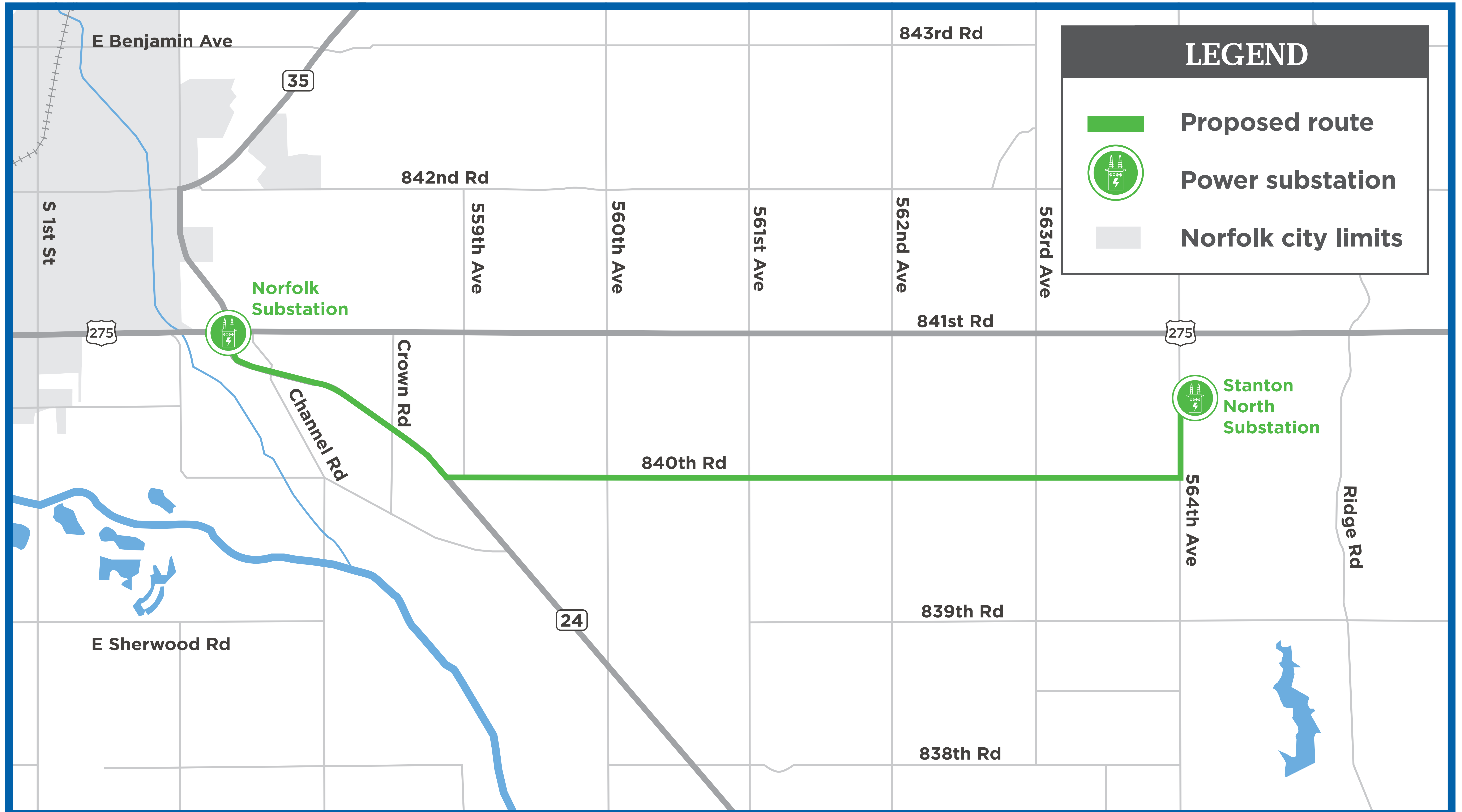
WITH SUBS.	NPPD	OTHER	FUTURE
WIND			
HYDRO			
FOSSIL			
DIESEL			
GAS			
NUCLEAR			
SOLAR			



Routing, Siting, and Public Involvement

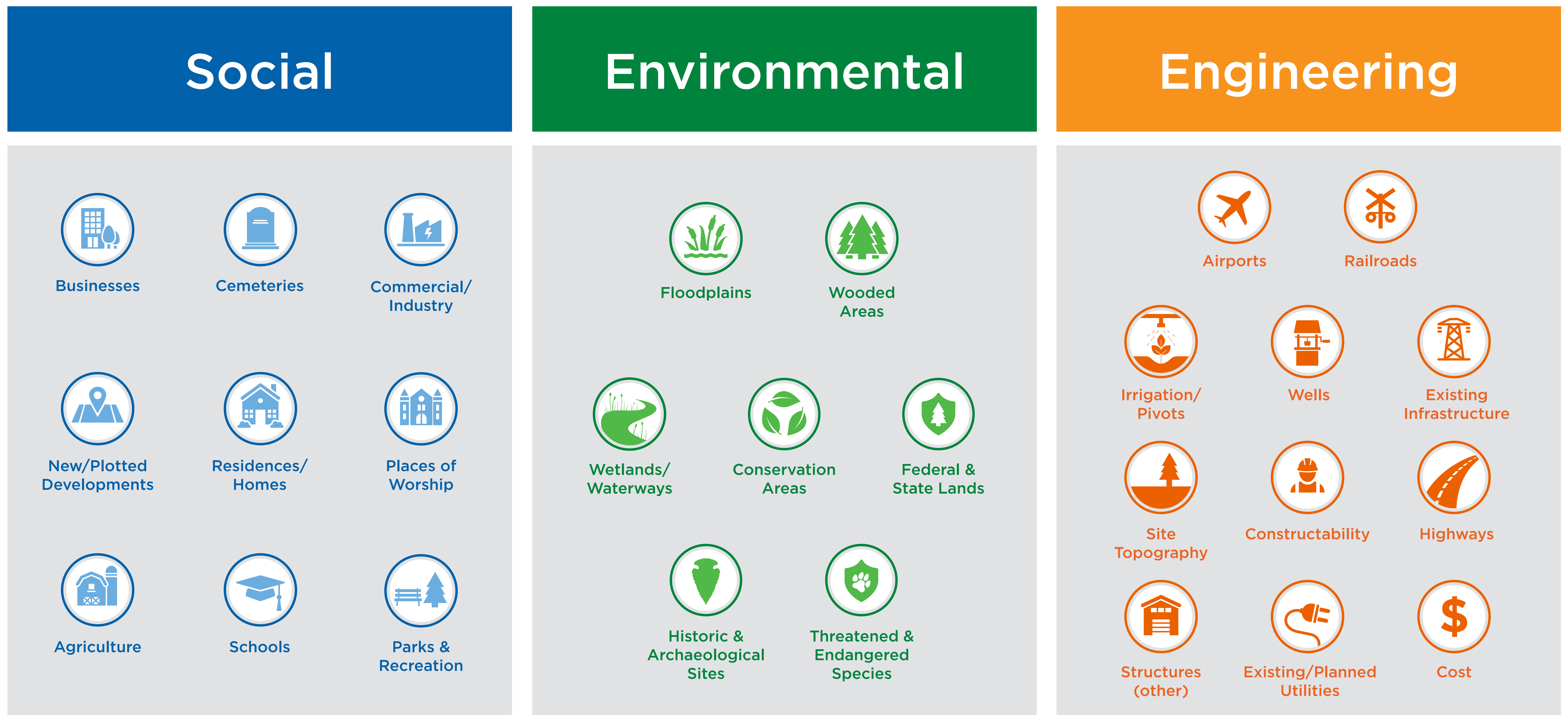


Norfolk-Stanton North Project Map



Routing & Siting Evaluation Criteria

Transmission line routing involves trade-offs between a variety of factors called routing criteria. The most promising route options balance each of the three types of criteria, which are social, environmental, and engineering.



Environmental Resources

NPPD coordinates with federal, state, and local agencies and organizations such as:

- Federal Aviation Administration
- U.S. Fish and Wildlife Service
- U.S. Army Corps of Engineers
- Nebraska Game and Parks Commission
- Nebraska Department of Environment and Energy
- Nebraska Department of Transportation
- Natural Resource Districts
- History Nebraska
- Local Airport Authorities
- Private Non-Government Organizations

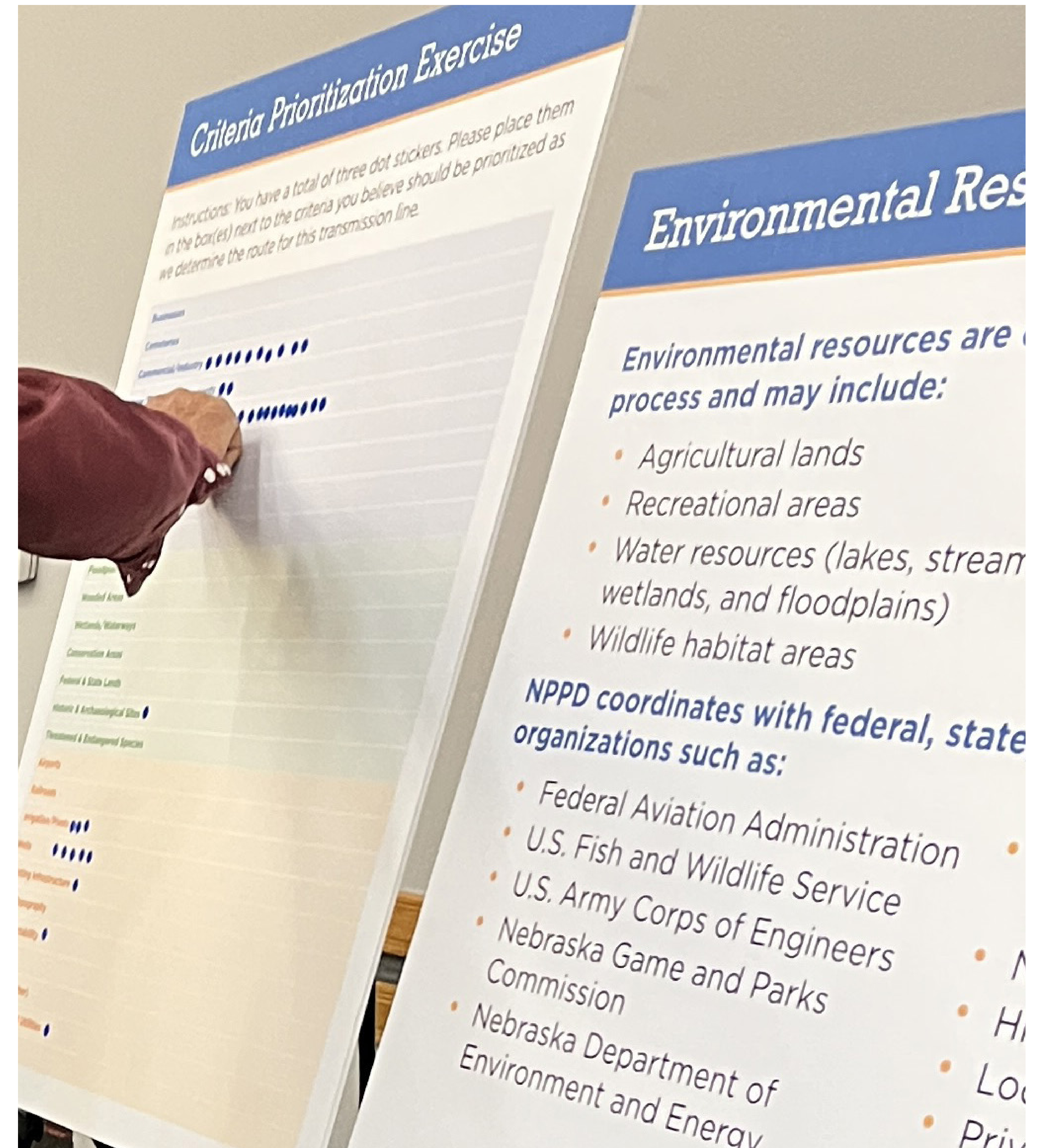


Criteria Prioritization Activity Results

During phase one, we asked both in person and online attendees to tell us which routing criteria are most important to them.

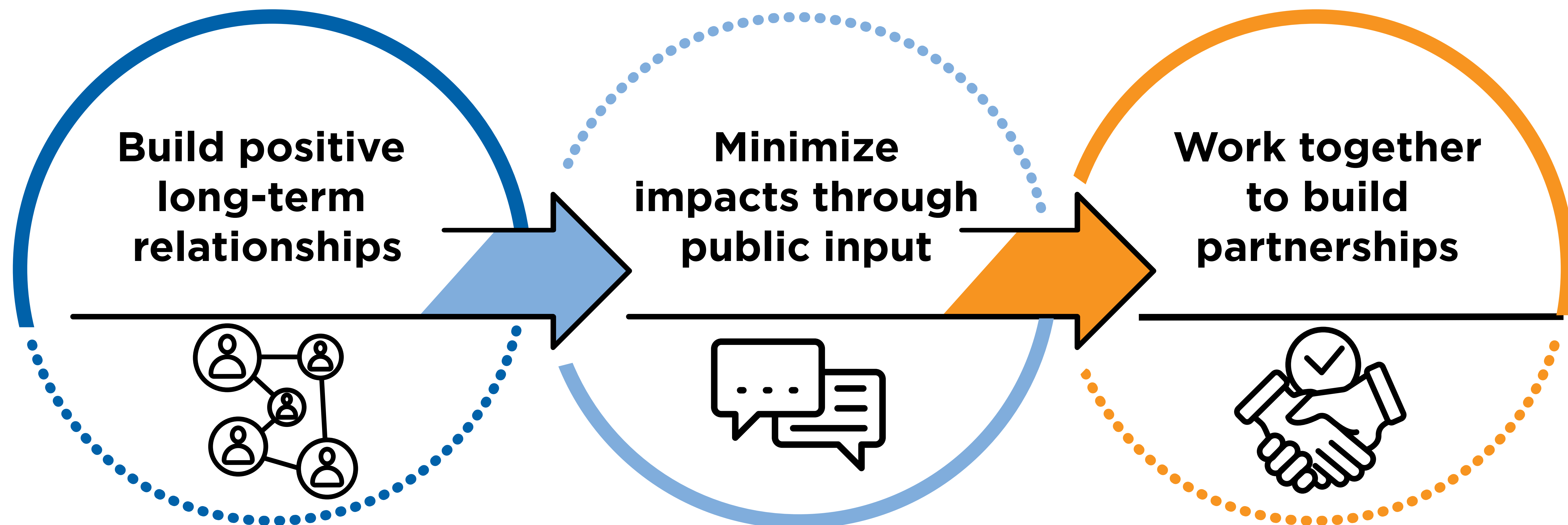
The top four identified were:

1. Residences/Homes
2. Agriculture
3. Irrigation/Pivots
4. Commercial/Industry



Right-of-Way Activities

We strive to build positive, long-term relationships with landowners and tenants during right-of-way activities.



Right-of-Entry Agreement — If needed, will provide access for:

- Environmental assessments
- Appraisal work
- Survey activities
- Cultural and historical resource assessments
- Easement Acquisition:
 - Compensation
 - Terms and conditions
 - Right-of-way width
- Post Construction:
 - Construction damage compensation
 - Property restoration



Easement Compensation

Structure Payment

\$100

per single pole
(steel or wood)

- Payment for the easement area will be determined by a Nebraska Licensed independent real estate appraiser.
- The appraiser will view all properties and provide a value for each individual tract of land.
- Payment for any special consideration, such as shelterbelts, fences, gates, etc., will be determined on a case-by-case basis.

Construction Damages

In addition to the easement payment, the property owner or tenant will be compensated for any damages to crops, fences, or other property that may occur during construction or when maintenance is required in the future.



Transmission Line Structures

There are two typical types of structures that would be used on this project:

- 115 kV single-pole wood structure
- 115 kV single-pole steel structure



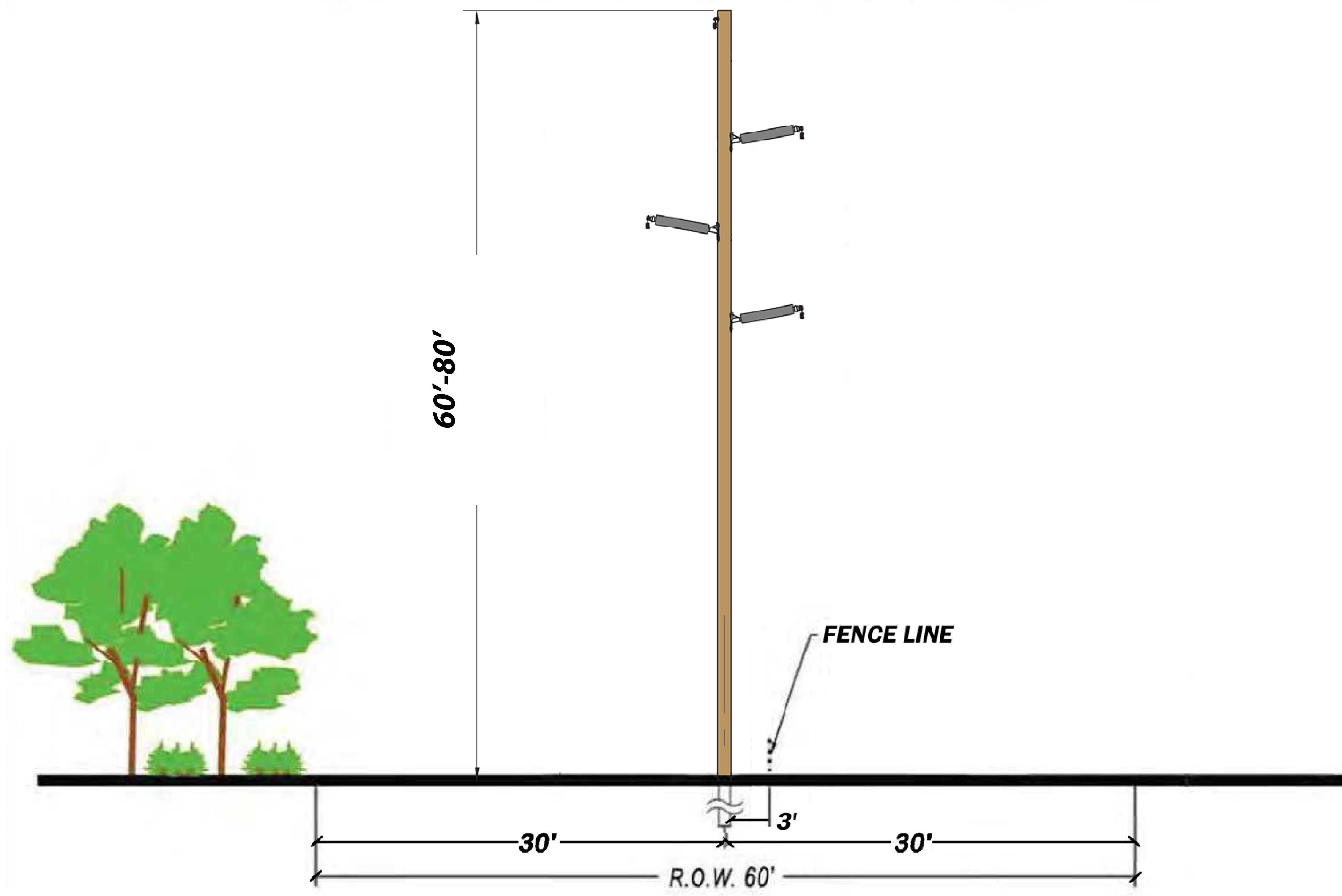
**TYPICAL SINGLE-POLE
WOOD STRUCTURE**



**TYPICAL SINGLE-POLE
STEEL STRUCTURE**



Typical Right-of-Way Width



Typical 115kV Single Circuit, Single Pole Structure

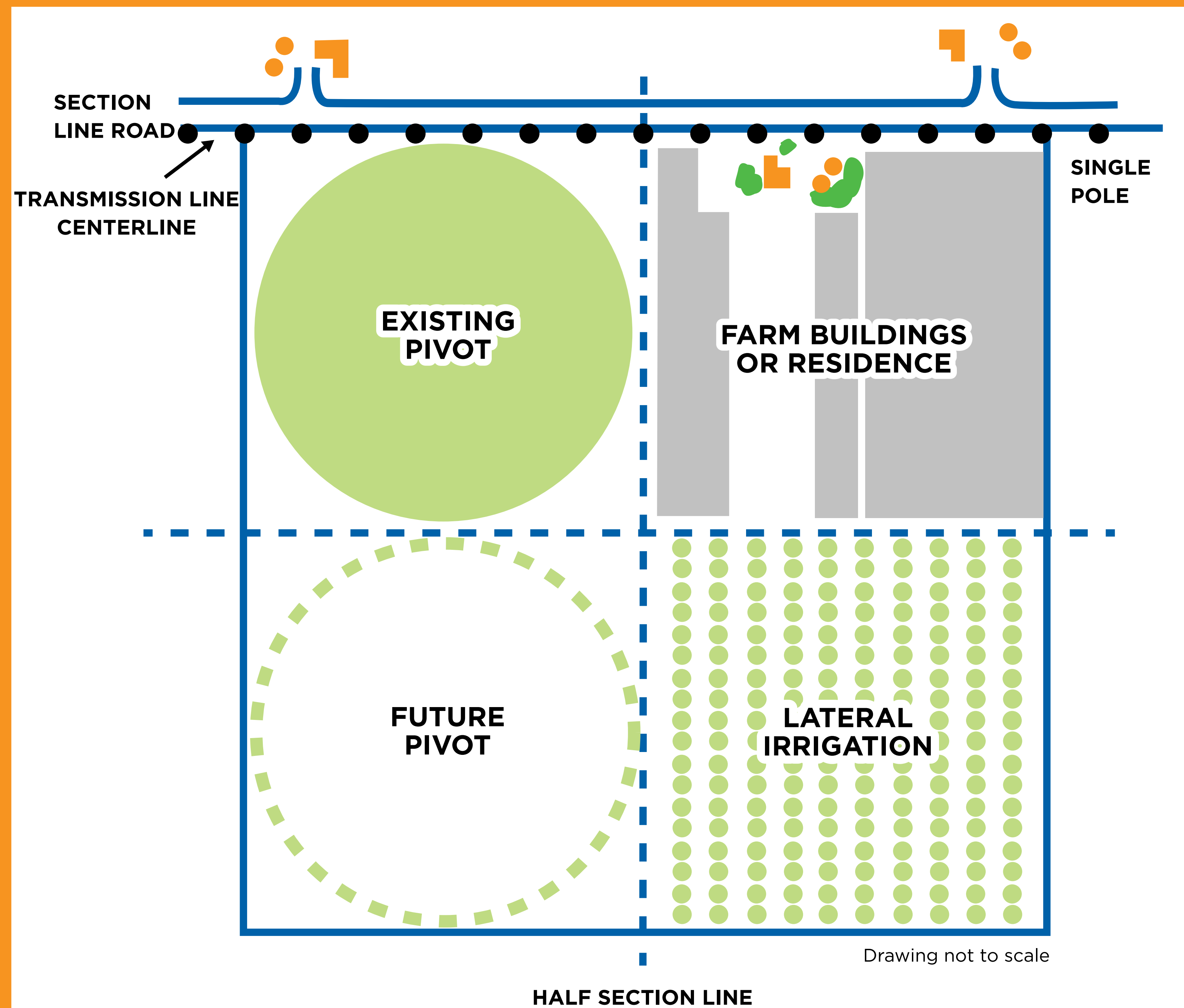
Height of structure and right-of-way (R.O.W.) width can vary based on special circumstances.



Typical Structure Locations – Single Pole

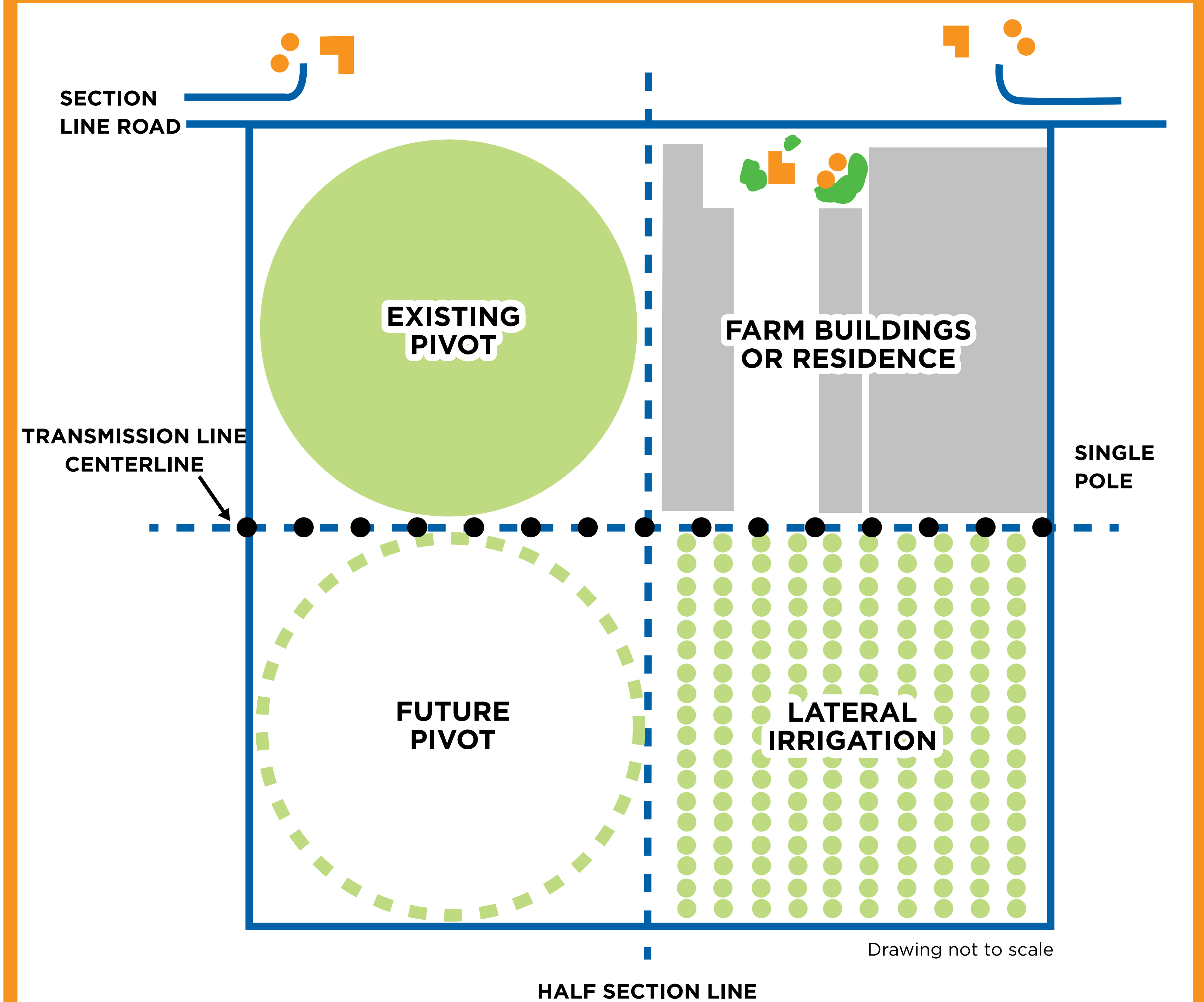
115 kV Single-Pole Structure Placement Along Road:

Typically ~15 structures per mile



115 kV Single-Pole Structure Placement Along Half Section Line:

Typically ~15 structures per mile



What should we know about your property?

Help us identify constraints and opportunities regarding:

- Residences
- Grain bins and outbuildings
- Planned (permitted) housing units
- Platted subdivisions
- Well locations
- Gravity flow irrigation and flow direction
- Terraces and drain tiles
- Planned pivots and water permits
- Underground facilities
- Future land-use
- Cemeteries, churches, and schools
- Commercial and industrial development
- Communication towers
- Cultural and historical resources
- Environmental areas



Stay Involved

Thank you for attending! You can stay involved with the Norfolk-Stanton North Project by following project news in NPPD newsletters, newspapers, radio, and on social media, or by visiting our website at norfolk-stantonnorth.nppd.com.



norfolk-stantonnorth@nppd.com



1-888-677-3412



[@nebraskapublicpowerdistrict](https://www.facebook.com/nebraskapublicpowerdistrict)



[@nebraska_public_power](https://www.instagram.com/nebraska_public_power)



[@NPPDnews](https://www.x.com/NPPDnews)



[@NPPDTV](https://www.youtube.com/NPPDTV)

