

# NEW LOAD QUEUE PROCESS

## WHY CHANGE THE PROCESS?

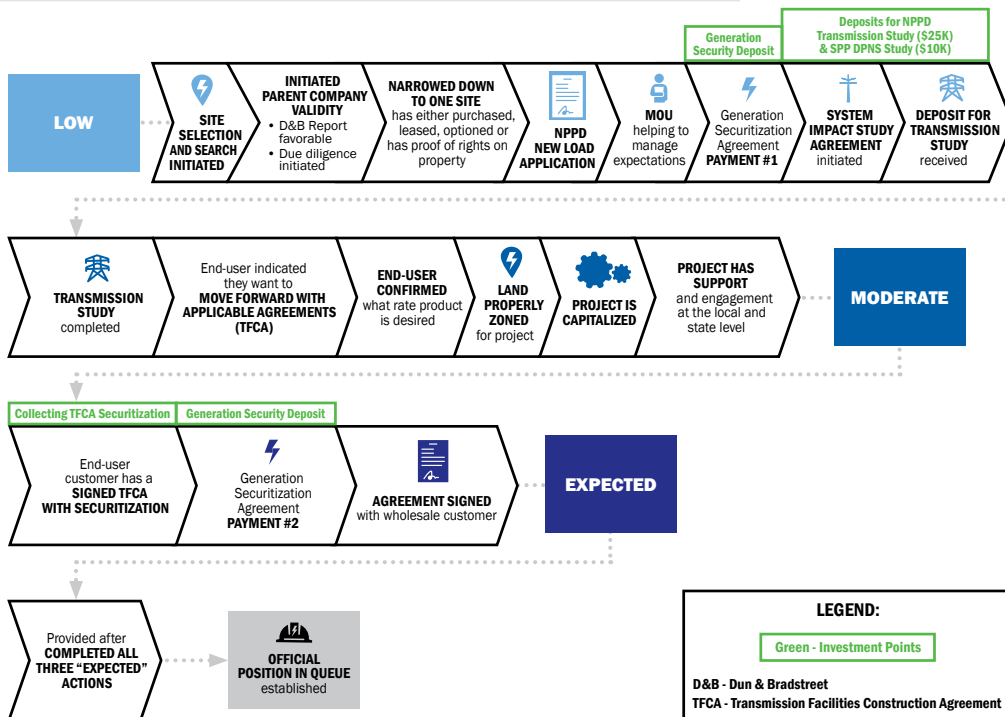
For more than five decades, NPPD has been proud to provide low-cost, reliable electricity to Nebraskans. Due in part to public power's success in keeping rates affordable and reliability rankings high, our state has become an attractive place to plant roots – not just for individuals, but for businesses, too!

A recent, unprecedented influx of companies wanting to call Nebraska home has presented some wonderful opportunities for our rural communities. Amid the excitement, however, is a challenge. As a utility, we must ensure we can support the coming expansions while meeting the continued needs of existing customers.

In early 2024, NPPD thus established a New Load Queue Process to manage the loads seeking service in years to come. This process applies to all new electrical service requests that are greater than or equal to 5 megawatts (single site or in aggregate).

The goal of the New Load Queue Process is to balance electrical requirements of new loads with the generation and transmission infrastructure needed to serve them. Outlined below, this process will help manage customers' expectations as they look to begin construction and come on-line. Most importantly, the process will do so without sacrificing the affordability, reliability, and resiliency that Nebraskans have come to know and trust.

## WHAT IS THE NEW PROCESS?



## QUESTIONS?

If you have questions about load queue, please contact:

**Patrick Hanrahan**

General Manager Retail Services  
pmhanra@nppd.com

**Nicole Sedlacek**

Economic Development Manager  
njsedla@nppd.com

**Chad Podolak**

Stakeholder & Advocacy Manager  
cjpodol@nppd.com

Account Managers - Wholesale

**Larry Arens**

learens@nppd.com

**Chris Hegert**

cmheger@nppd.com

**Carsten Mlady**

cjmlady@nppd.com

## WHAT ARE THE BENEFITS?

The New Load Queue Process is of benefit to all parties. For new customers, completion of the process will provide an estimated in-service date to help with planning on the business' end. For NPPD and its wholesale partners, securing the agreements and deposits required by the process will offer confirmation of the anticipated future load, allowing adequate transmission and generation facilities to be put in place. Finally, for existing customers, the process will ensure that this period of substantial load growth has as little impact to their service as possible.



**Nebraska Public Power District**

Always there when you need us

Updated: June 2024