



# Water Supply Update

THE POWER OF PEOPLE

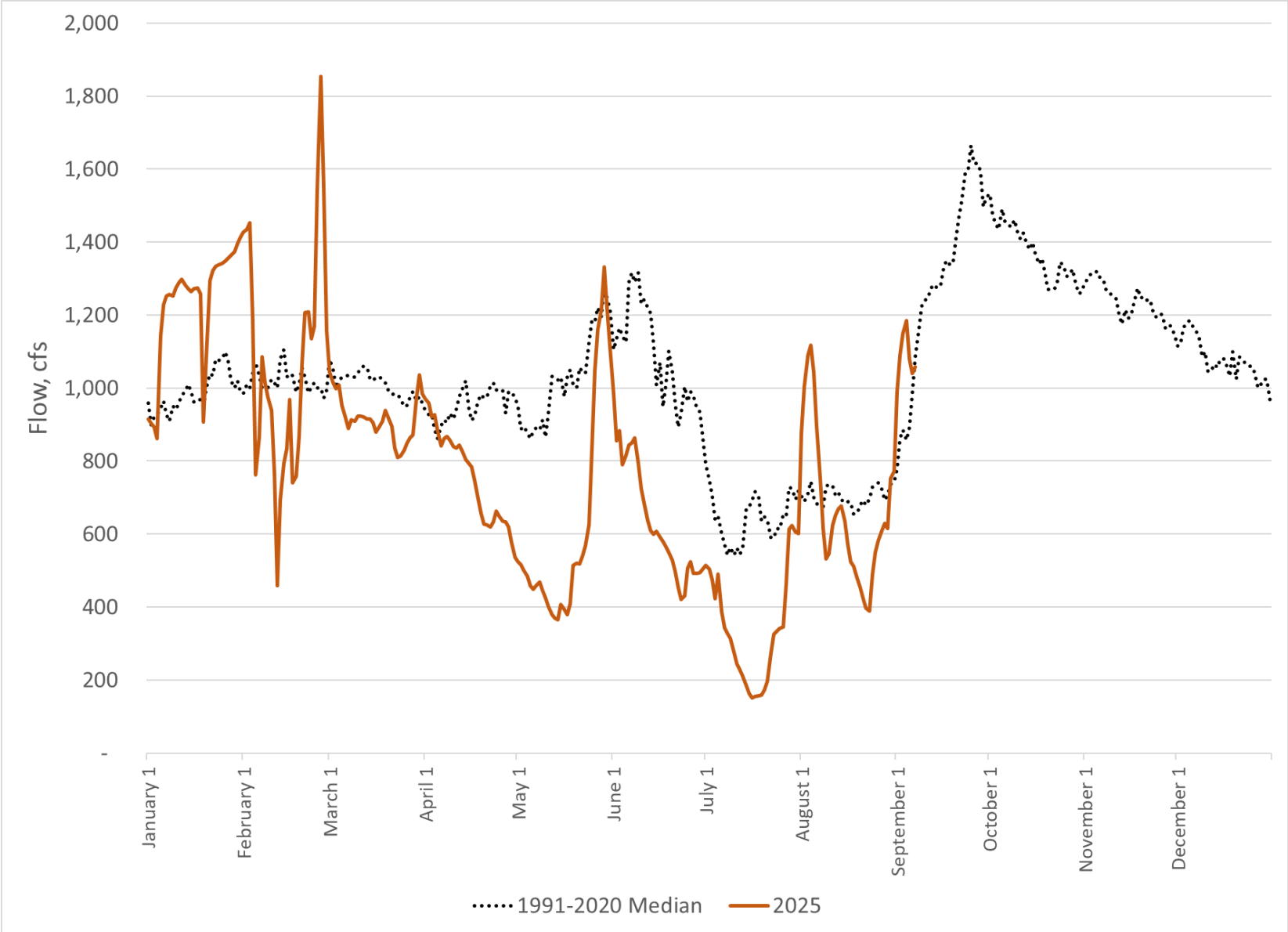
NPPD Board of Directors Meeting  
Operations Committee  
September 2025

Kyle Liebig  
Water Resources Manager



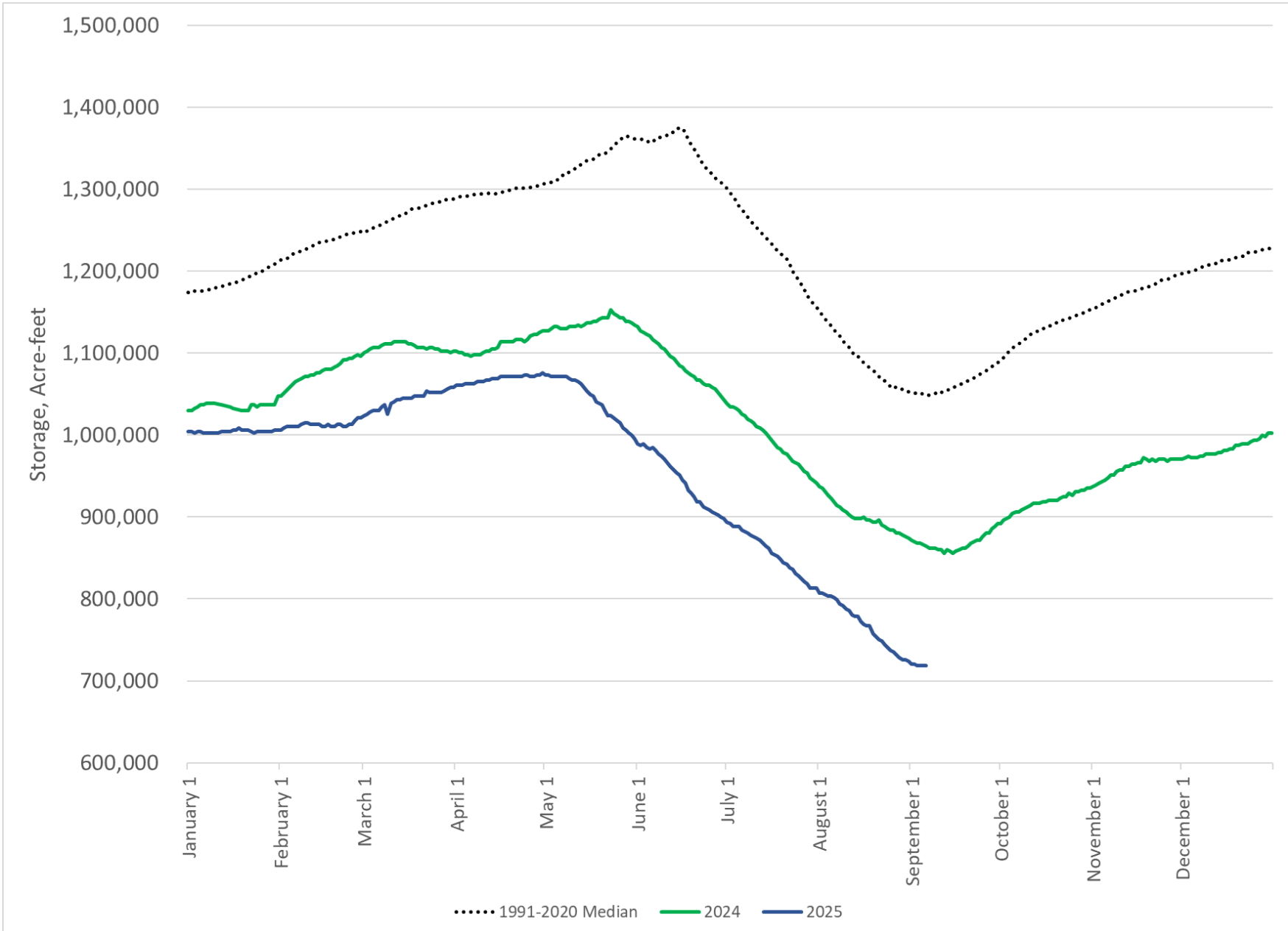
# Lake McConaughy Inflows (North Platte River at Lewellen)

2025 Data Preliminary



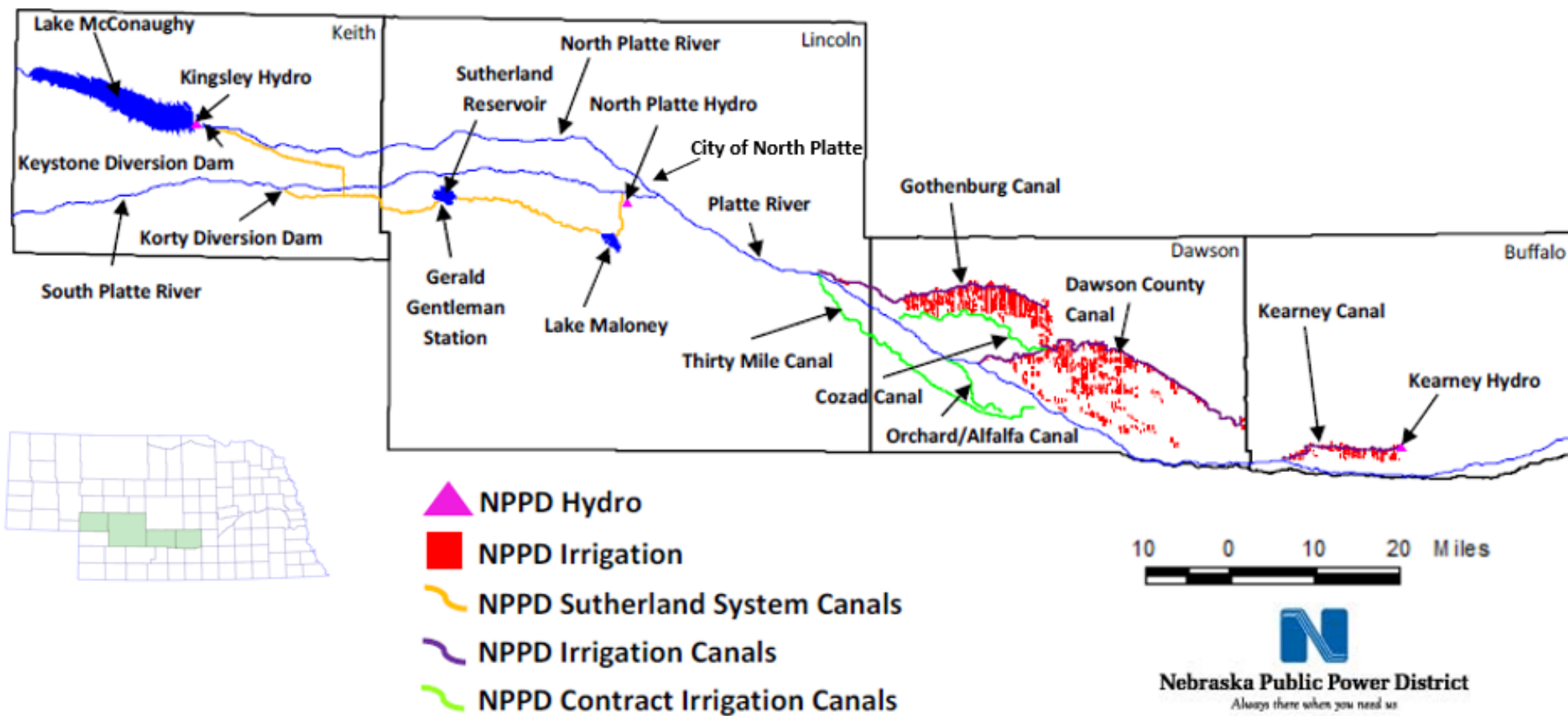
# Lake McConaughy Storage

2025 Data Preliminary



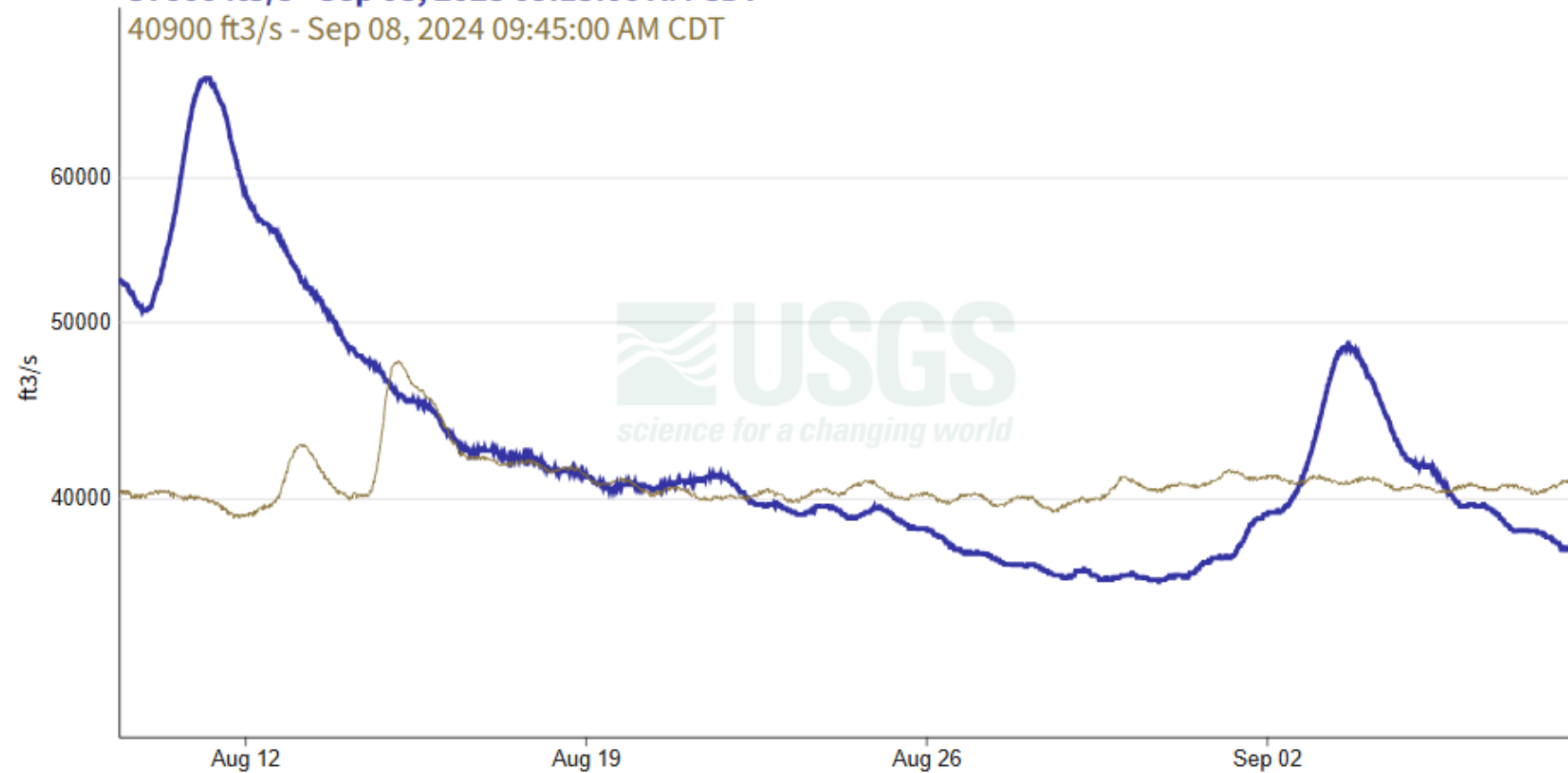
# Irrigation Season

- Successfully supplied a full supply of irrigation water to the 3 NPPD canals and our 3 Non-NPPD canals
- Ended irrigation diversions September 5<sup>th</sup> and 6<sup>th</sup>



August 9, 2025 - September 8, 2025

Discharge, cubic feet per second

37600 ft<sup>3</sup>/s - Sep 08, 2025 09:15:00 AM CDT40900 ft<sup>3</sup>/s - Sep 08, 2024 09:45:00 AM CDT

# U.S. Drought Monitor – High Plains

## U.S. Drought Monitor Nebraska

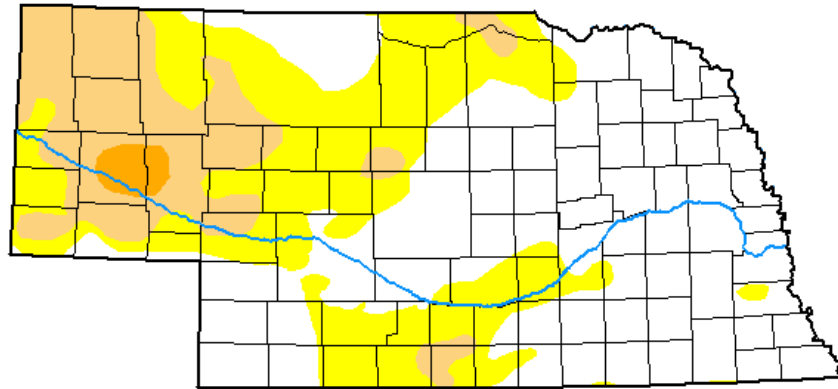
September 2, 2025

(Released Thursday, Sep. 4, 2025)

Valid 8 a.m. EDT

Drought Conditions (Percent Area)

	None	D0-D4	D1-D4	D2-D4	D3-D4	D4
Current	52.59	47.41	17.71	1.28	0.00	0.00
Last Week 08-26-2025	48.50	51.50	23.36	2.53	0.00	0.00
3 Months Ago 06-03-2025	0.41	99.59	85.99	35.34	1.57	0.00
Start of Calendar Year 01-07-2025	2.39	97.61	84.11	45.99	8.16	0.00
Start of Water Year 10-01-2024	7.23	92.77	48.35	14.08	0.00	0.00
One Year Ago 09-03-2024	32.47	67.53	27.50	6.01	0.00	0.00



### Intensity:

None	D2 Severe Drought
D0 Abnormally Dry	D3 Extreme Drought
D1 Moderate Drought	D4 Exceptional Drought

The Drought Monitor focuses on broad-scale conditions. Local conditions may vary. For more information on the Drought Monitor, go to <https://droughtmonitor.unl.edu/About.aspx>

### Author:

David Simeral  
Western Regional Climate Center



[droughtmonitor.unl.edu](https://droughtmonitor.unl.edu)





# THE POWER OF PEOPLE



## Questions

Stay connected with us.



**Nebraska Public Power District**  
*Always there when you need us*