



Production

Monthly Performance Update

THE
POWER OF
PEOPLE

NPPD Board of Directors Meeting
Operations Committee
September 2025

Art Wiese - Vice President, Energy Production



Nebraska Public Power District
Always there when you need us

Gerald Gentleman Station

Significant Operating Events



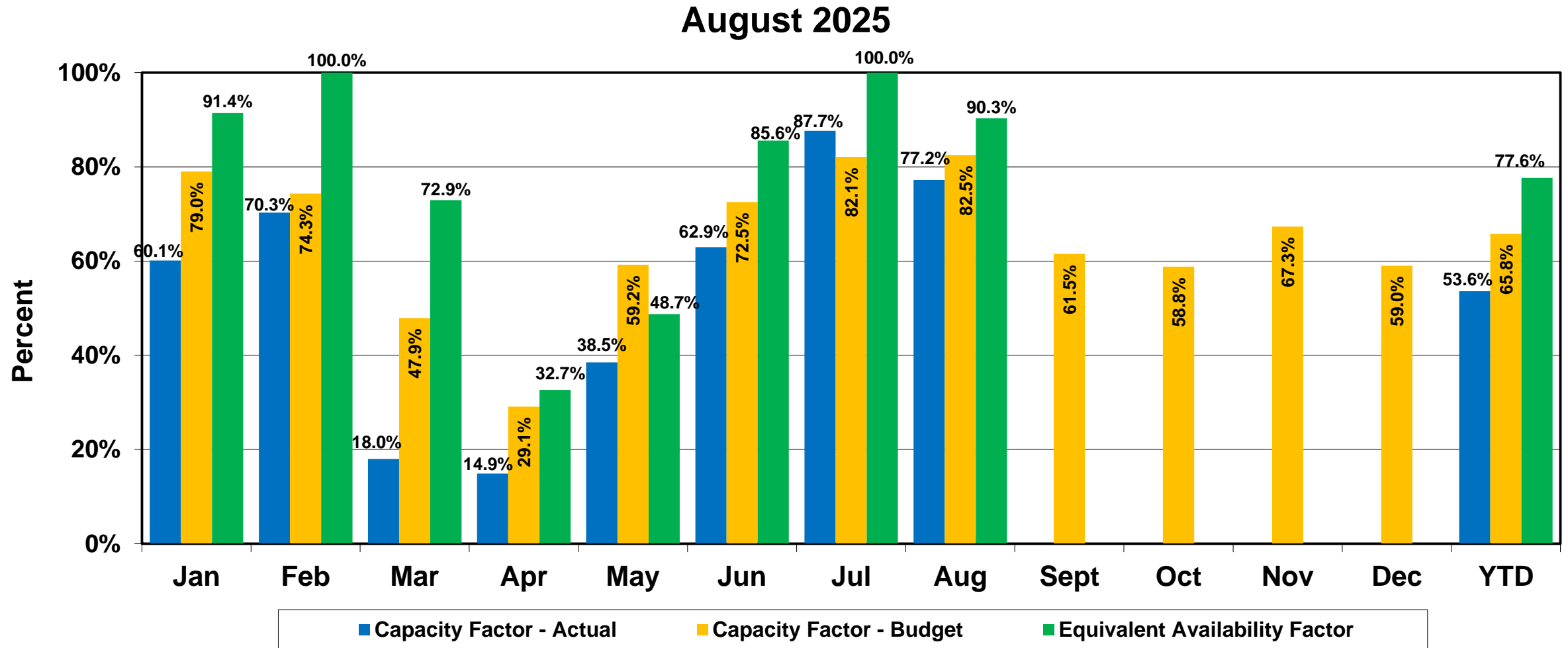
- **Unit 1:** Maintenance outage on August 2nd due to reheater tube leak, returned on the 4th. Forced Derate on the 14th due to air heater issues, returned same day.
- **Unit 2:** Forced outage on August 9th due to tube leak, returned on the 13th.



- ✓ Unit 1 began operation in 1979
665 MW
- ✓ Unit 2 began operation in 1982
700 MW

Gerald Gentleman Station

Capacity & Equivalent Availability Factors



Sheldon Station



Significant Operating Events

- **Unit 1:** Maintenance outage on August 7th due to reheater issues, returned on the 10th. Forced outage on the 11th due to FD fan bearing issues, returned on the 20th. Force derate on the 22nd due to air leak, returned same day.



- ✓ Constructed between 1958 and 1963
- ✓ Nuclear portion decommissioned in 1964 then converted to coal and gas-fired boiler
- ✓ Unit 1 began operation in 1961 (105 MW) / Unit 2 began operation in 1968 (120 MW)
- ✓ Combined: 225 MW

Sheldon Station

Significant Operating Events



- **Unit 2:** Forced outage on Aug. 5th due to downcomer issues, retuned same day.
 - ✓ Forced derate on 15th due to slag issues returned same day.
 - ✓ Forced derate on 19th due to slag issues, returned on 20th.
 - ✓ Forced derate on 20th due to boiler fouling, returned same day.
 - ✓ Forced derate on 21st due to furnace pressure issues.
 - ✓ Forced derate on 24th due to furnace pressure issues.
 - ✓ Forced derate on 25th due to superheater issues, returned same day.
 - ✓ Maintenance outage on 28th due to boiler fouling/reheater fouling, returned on 31st.

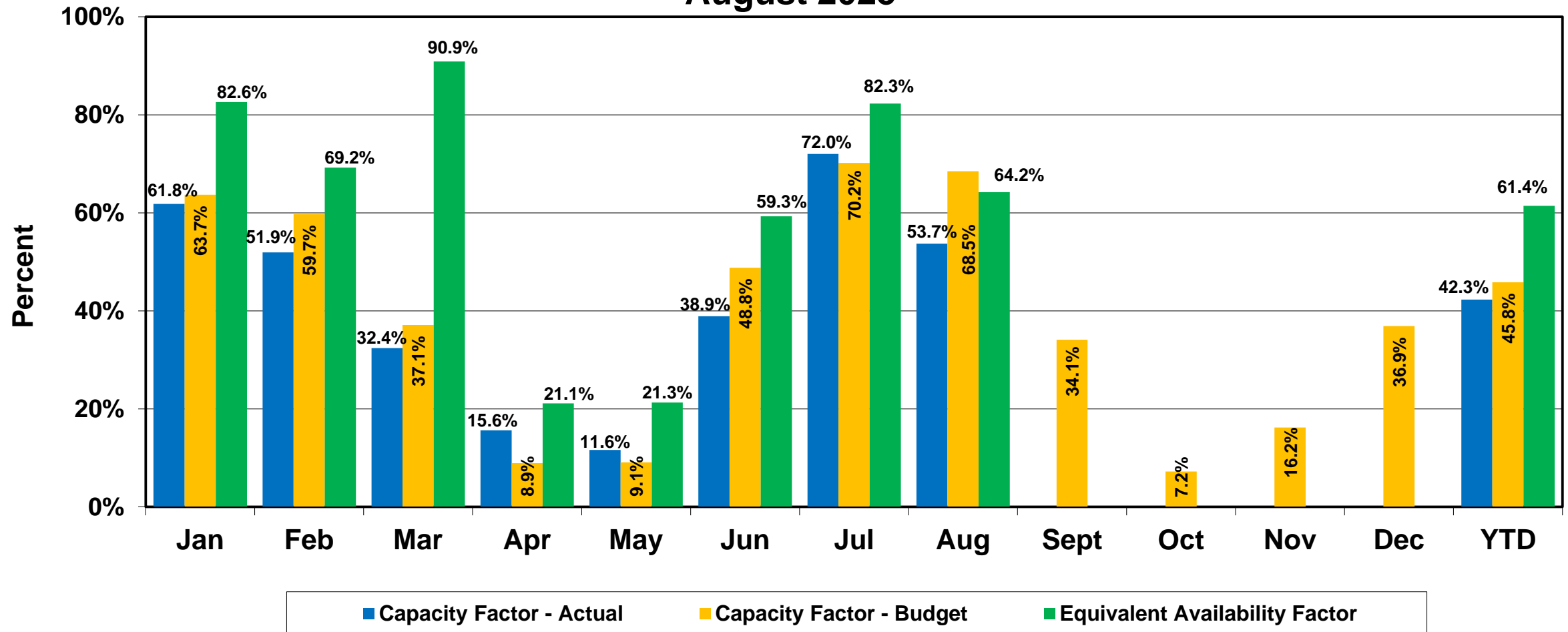


- ✓ Constructed between 1958 and 1963
- ✓ Nuclear portion decommissioned in 1964 then converted to coal and gas-fired boiler
- ✓ Unit 1 began operation in 1961 (105 MW) / Unit 2 began operation in 1968 (120 MW)
- ✓ Combined: 225 MW

Sheldon Station

Capacity & Equivalent Availability Factors

August 2025



Canaday Station

Significant Operating Events



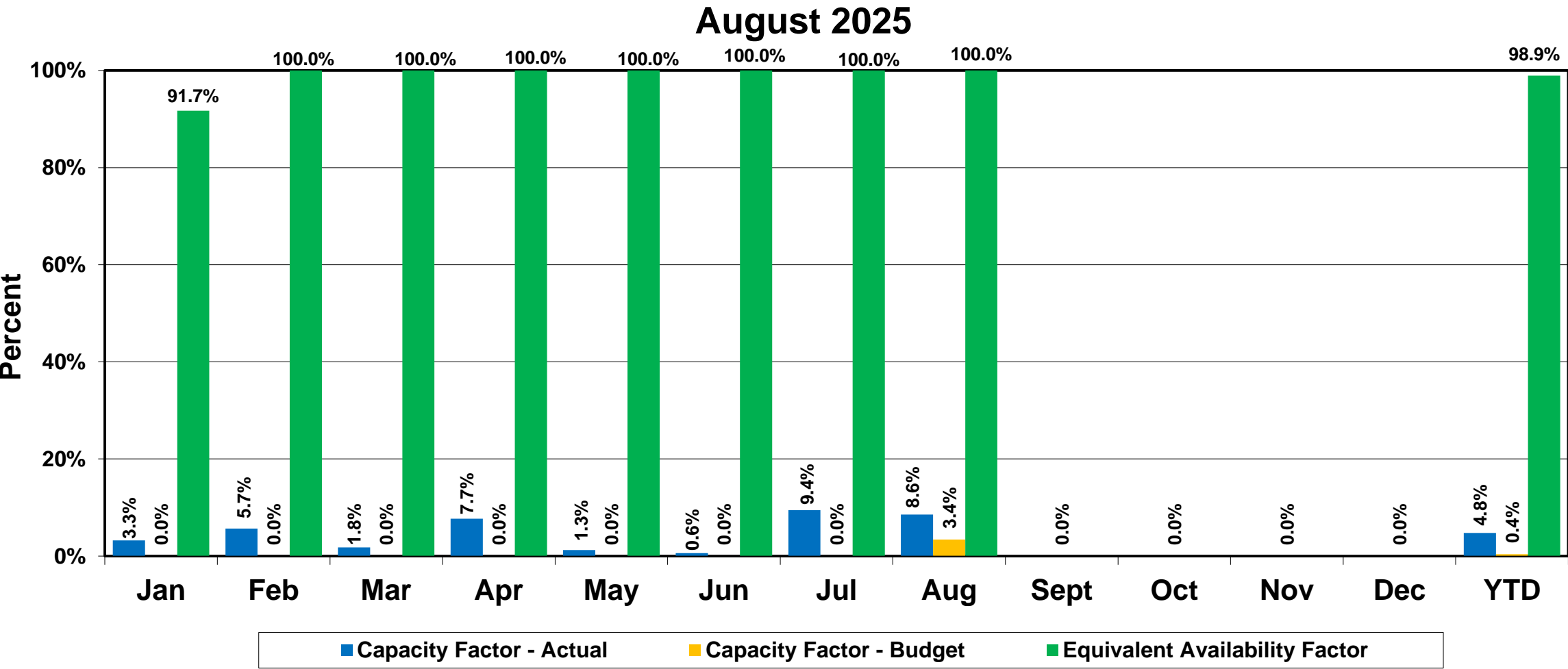
- Operated per Market Dispatch in August.



- ✓ Built in 1958 by CNPP&ID
- ✓ Purchased by NPPD in 1995
- ✓ Restarted facility in 1998
- ✓ 100 MW

Canada Station

Capacity & Equivalent Availability Factors



Beatrice Power Station



Significant Operating Events

- Forced derate on August 30th unit due to breaker issues VT4 returned moments later.
- Operated per market dispatch.



✓ Completed in 2005

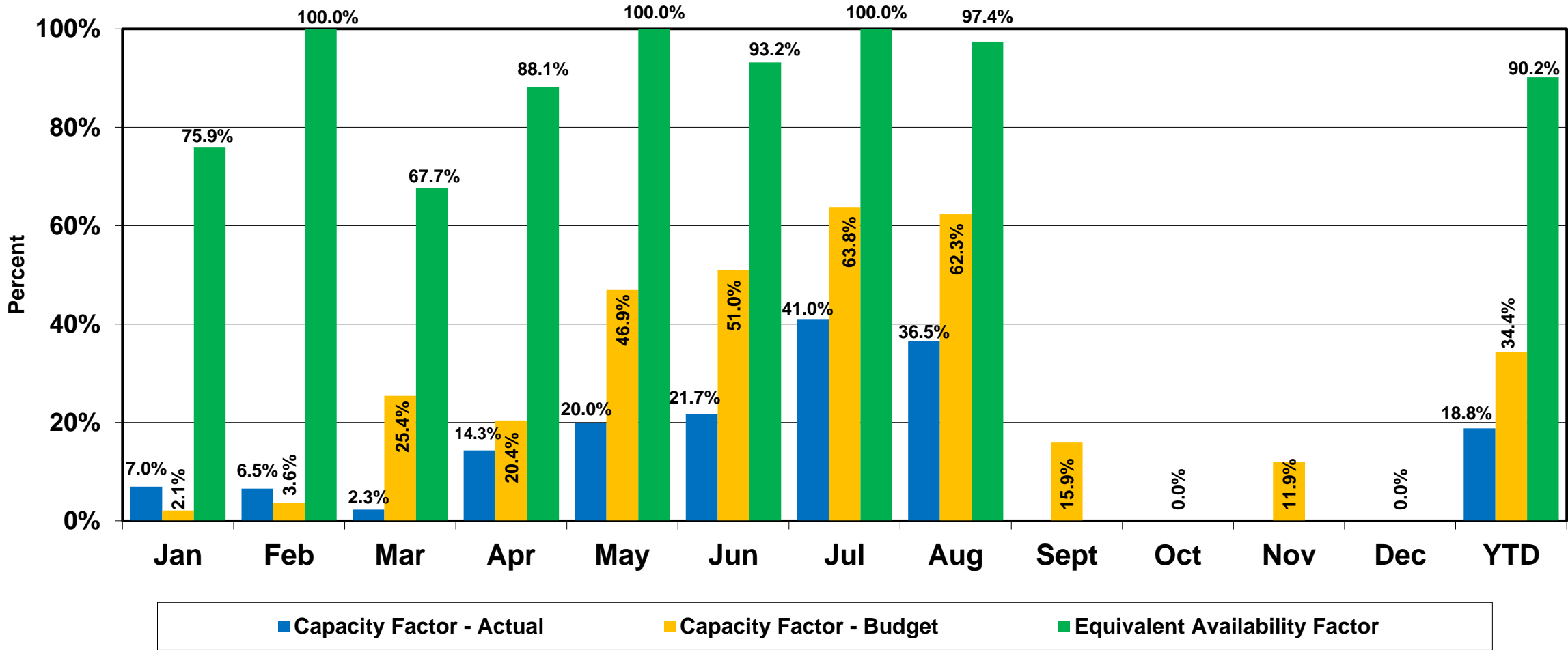
✓ 250 MW

- 80 MW each for Combustion Turbine
- 90 MW for Steam Turbine

Beatrice Power Station

Capacity & Equivalent Availability Factors

August 2025



Ainsworth Wind Turbines



Significant Operating Events

- **As of September 5th, there were four (4) turbines offline:**
 - ✓ Two for pitch cylinder replacement
 - ✓ Two for pitch cylinder leaks

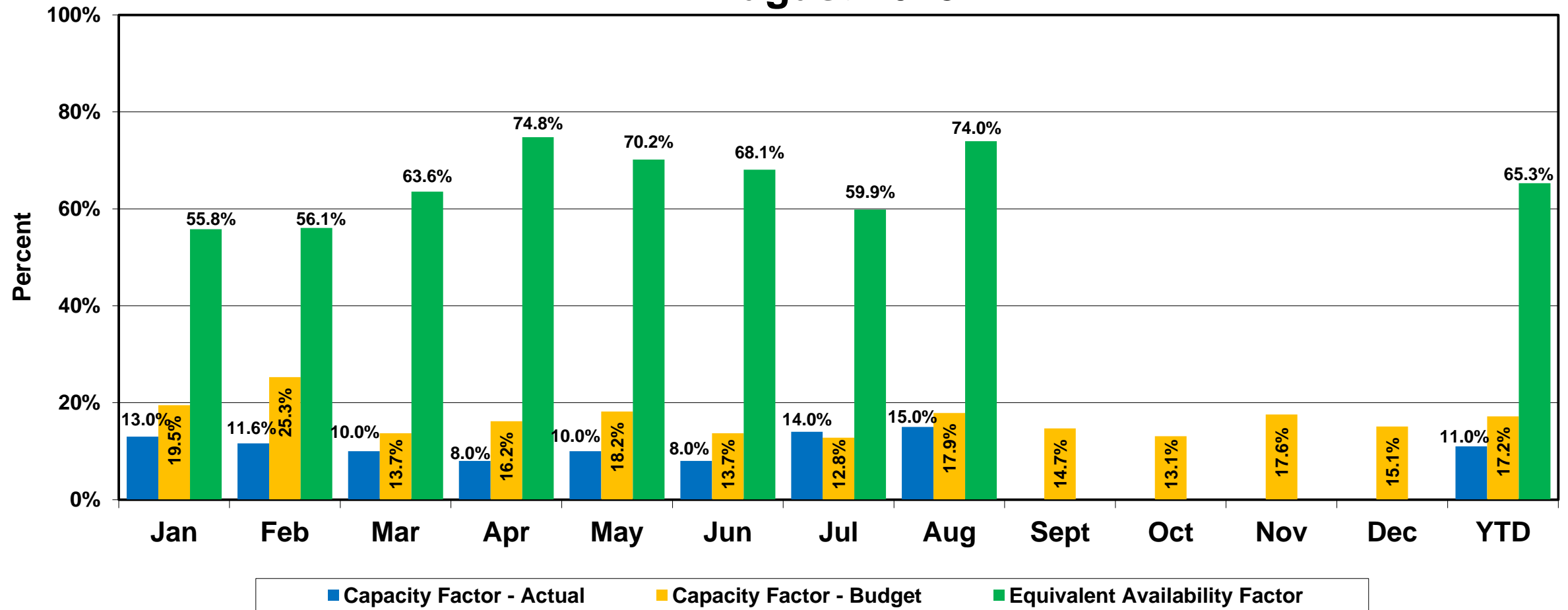


- ✓ NPPD Owned
- ✓ Commercial Operation: December 2005
- ✓ 60 MW total / NPPD Share: 32 MW
- ✓ 36 turbines
- ✓ 1.65 MW each
- ✓ Turbine blades 131 ft. long, tubular towers stand 230 ft. high

Ainsworth Wind Turbines

Capacity & Equivalent Availability Factors

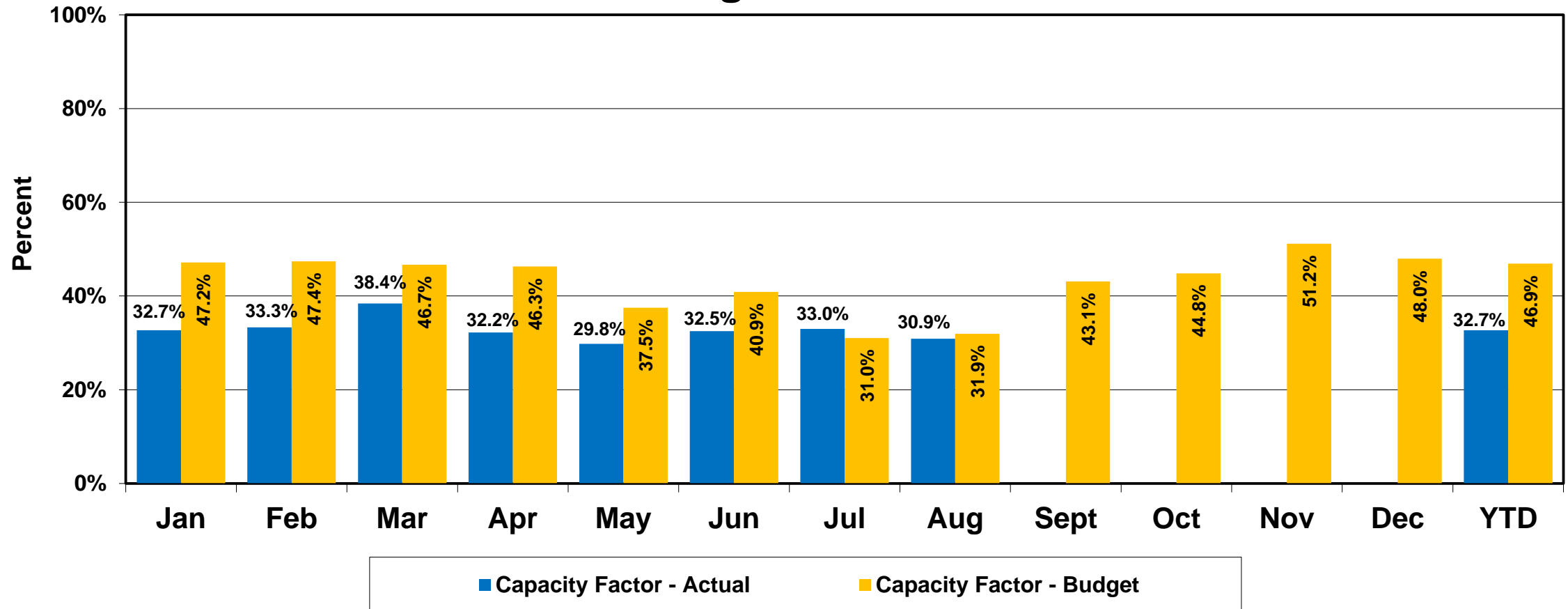
August 2025



PPA Wind Farm

Capacity Factor (average all combined)

August 2025

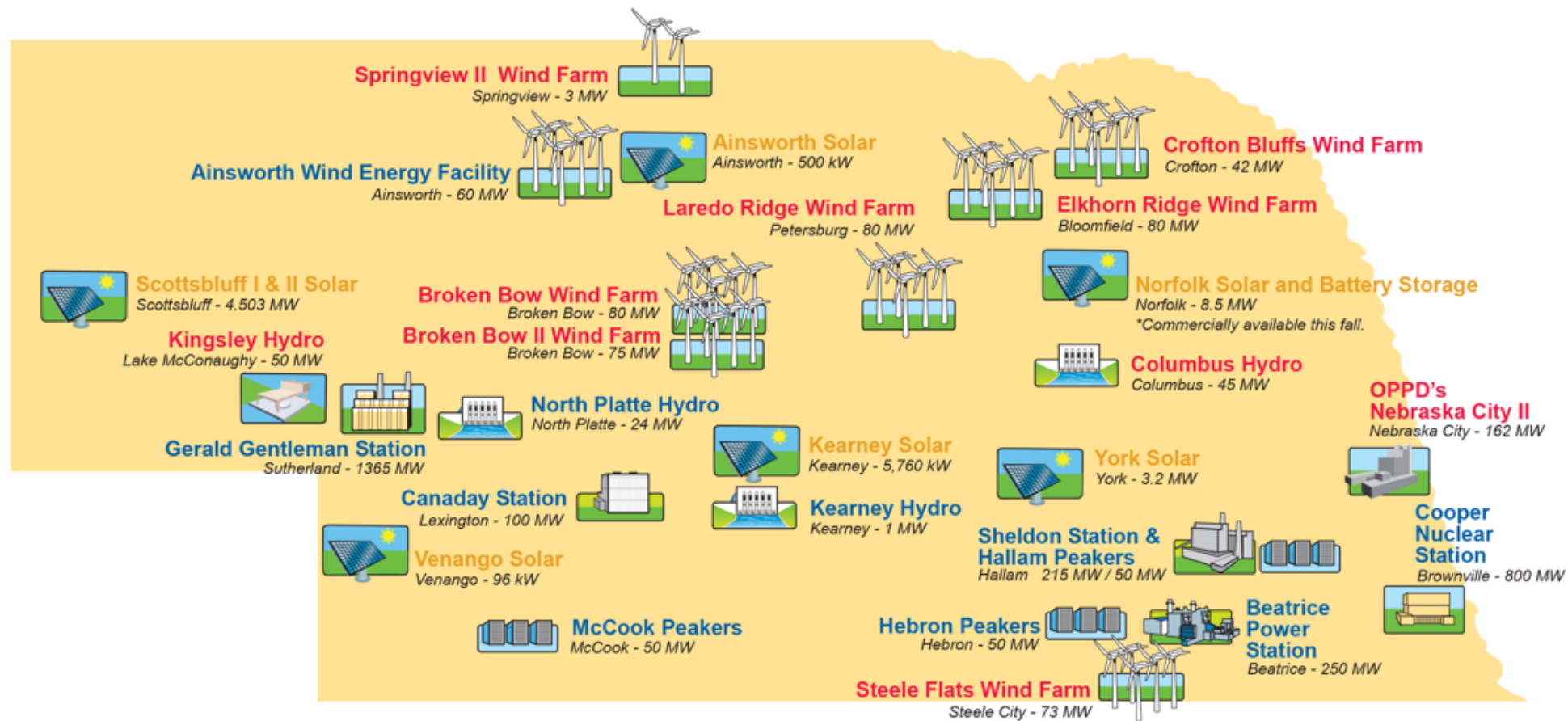


Summer fizzles out in August, prices across the North soften month-over-month



- Day-Ahead MECs decline \$4 month-over-month due to a step up in wind combined with decreased cash gas pricing
- DART spread flipped to negative this month, RT coming in \$0.48 above DA on average
- Wind generation steps up by 500MW on average in August, paired with cooler than average temps to soften market prices

NPPD's Generation Profile



LEGEND

- NPPD Owned
- Power Purchase Agreement (All or Part)
- Retail Community Solar Locations