



Production

Monthly Performance Update

THE
POWER OF
PEOPLE

NPPD Board of Directors Meeting
Operations Committee
November 2025

Art Wiese - Vice President, Energy Production



Nebraska Public Power District

Always there when you need us

Gerald Gentleman Station

Significant Operating Events



- **Unit 1:** Forced derate on 9/22-23 due to loss of reservoir pump. Operated per market dispatch remainder of September through October.
- **Unit 2:** Maintenance outage on 9/7 to replace FD fan rotor, returned on 9/11. Operated per market dispatch remainder of September through October.



- ✓ Unit 1 began operation in 1979
665 MW
- ✓ Unit 2 began operation in 1982
700 MW

Gerald Gentleman Station



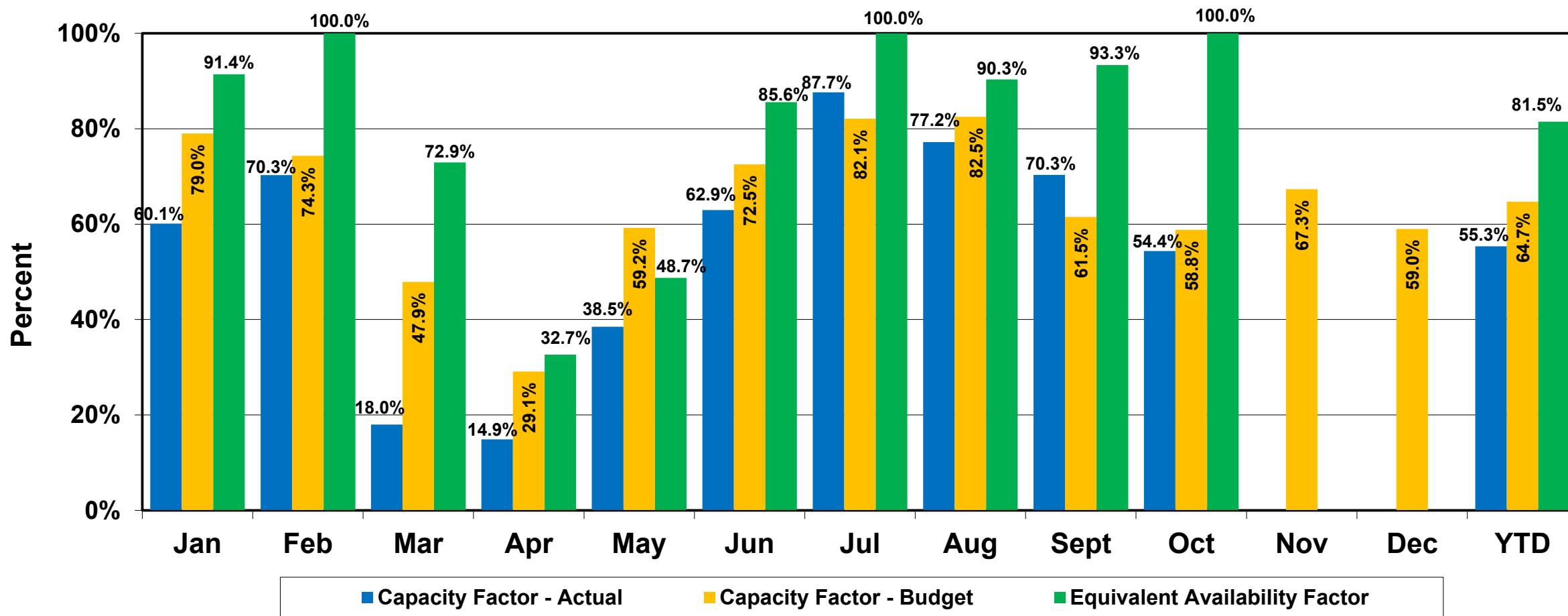
- **Slope Tube Leak on Unit 1, repaired during Maintenance outage Nov. 2-4, 2025:**



Gerald Gentleman Station

Capacity & Equivalent Availability Factors

October 2025



Sheldon Station



Significant Operating Events

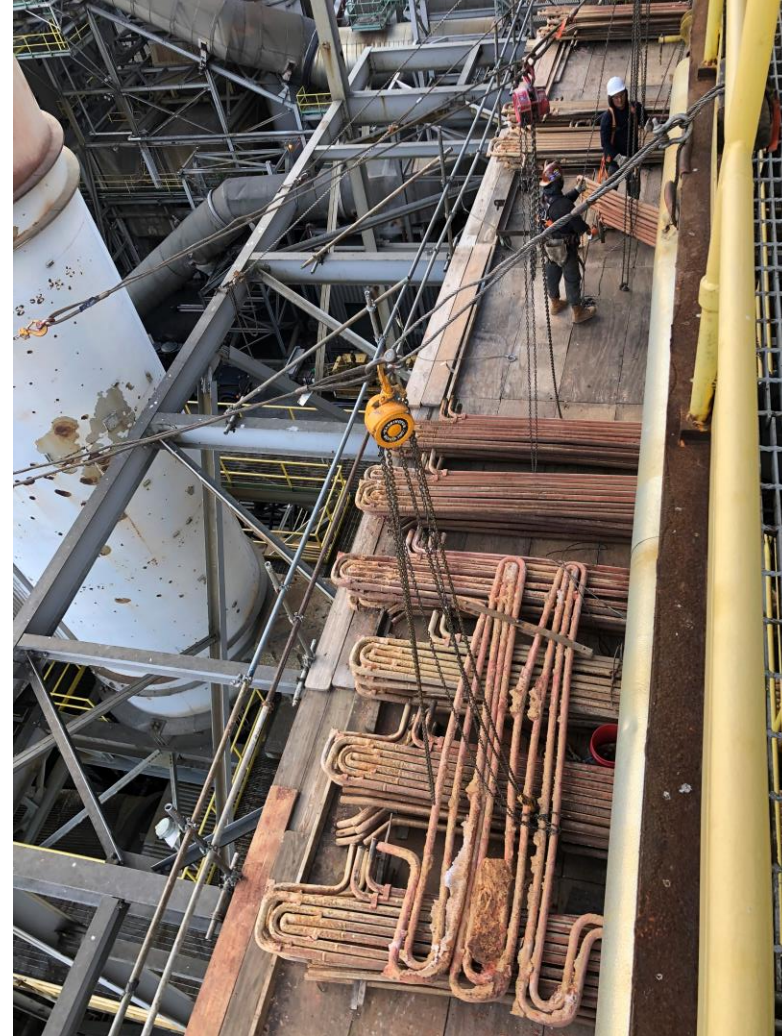
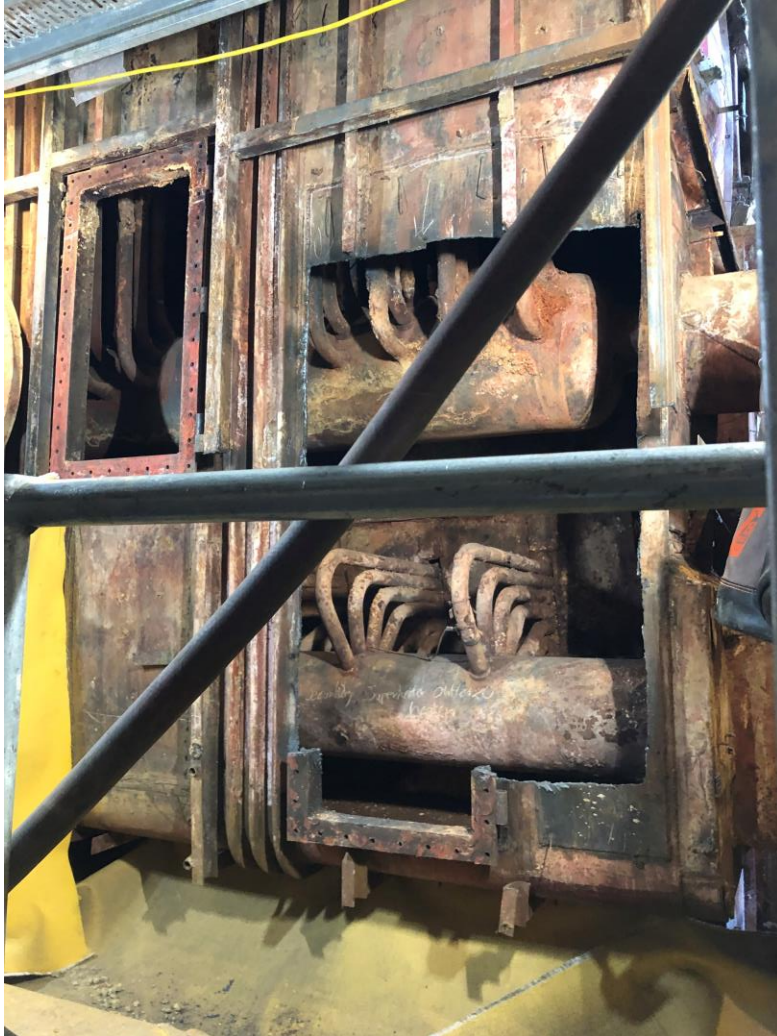
- **Unit 1:** Forced derate on 9/3 due to damper on cyclone; again on 9/22 due to furnace pressure issues. Forced outage on 9/5 due to tube leaked, returned on 9/12. Forced derate on 10/15 due to furnace pressure issues. Maintenance outage began on 10/17 due to maintenance margin available start planned fall outage 1 week early.
- **Unit 2:** Forced derate on 9/22 due to furnace pressure issues. Operated per market dispatch remainder of September. Planned outage began on 10/6.



- ✓ Constructed between 1958 and 1963
- ✓ Nuclear portion decommissioned in 1964 then converted to coal and gas-fired boiler
- ✓ Unit 1 began operation in 1961 (105 MW) / Unit 2 began operation in 1968 (120 MW)
- ✓ Combined: 225 MW

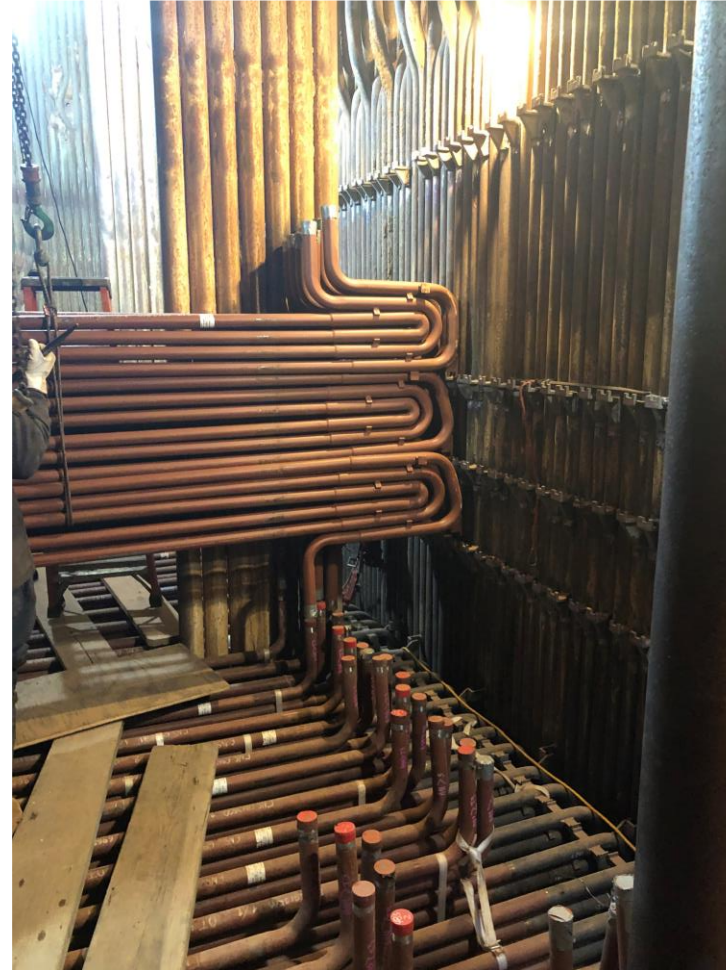
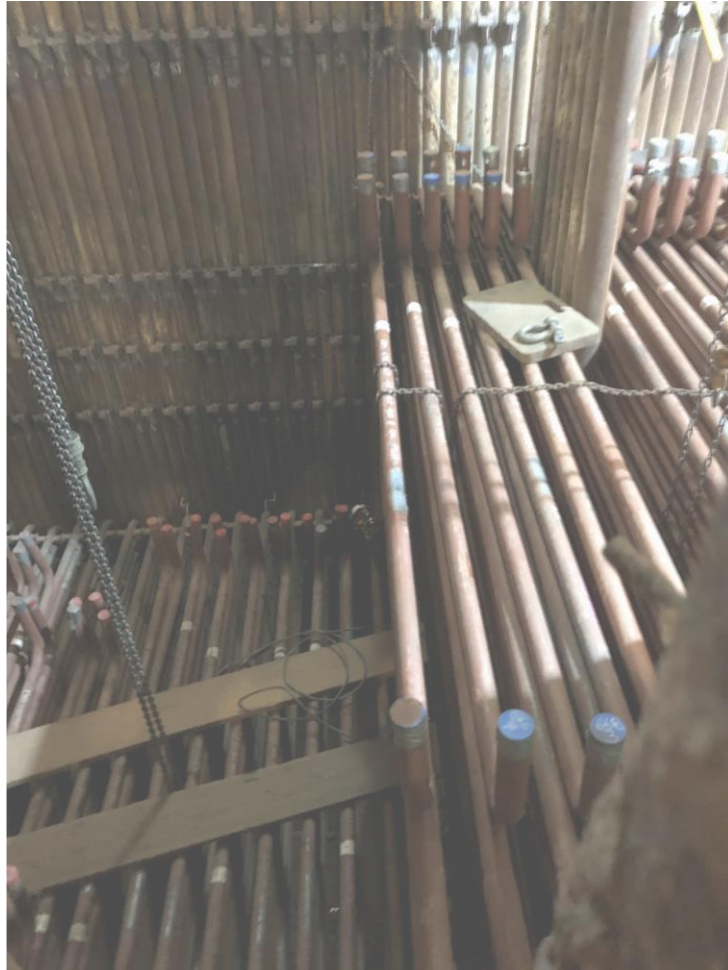
Sheldon Station

Outage Photos - Unit 2 Reheater



Sheldon Station

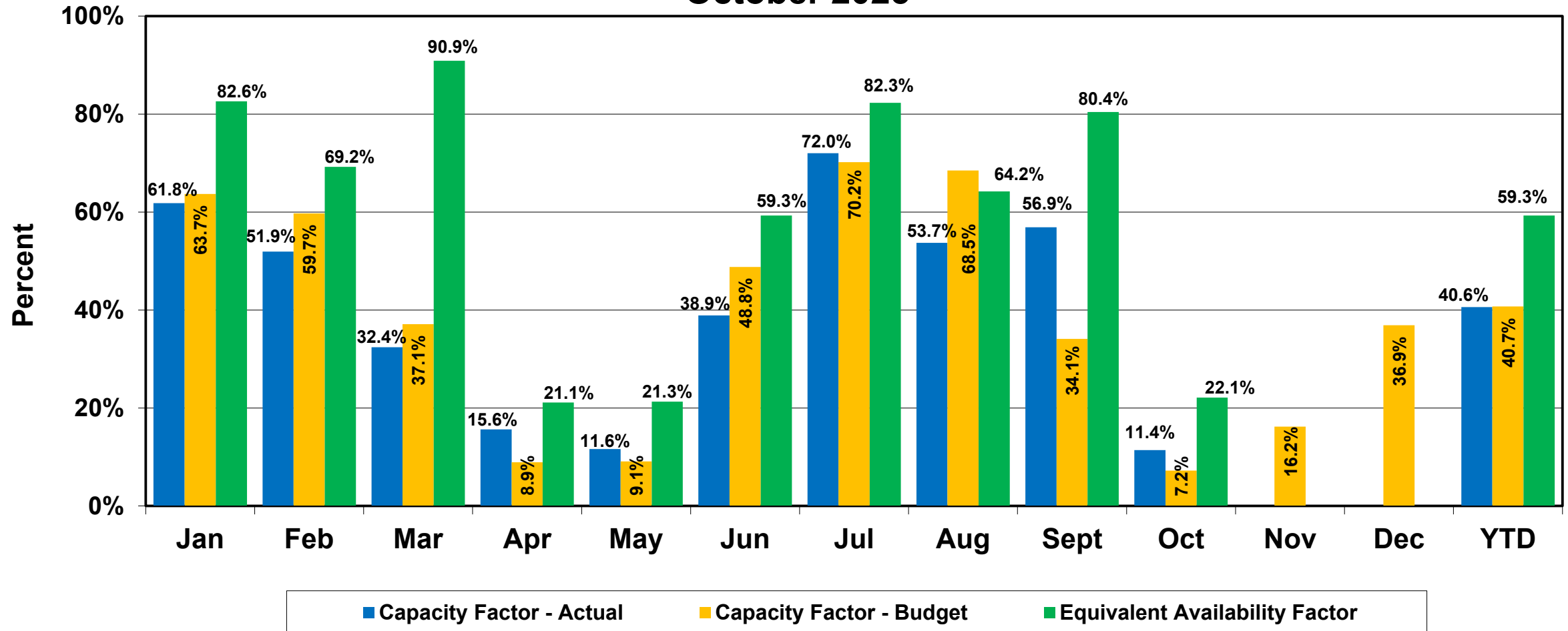
Outage Photos - Unit 2 Reheater



Sheldon Station

Capacity & Equivalent Availability Factors

October 2025



Canaday Station

Significant Operating Events



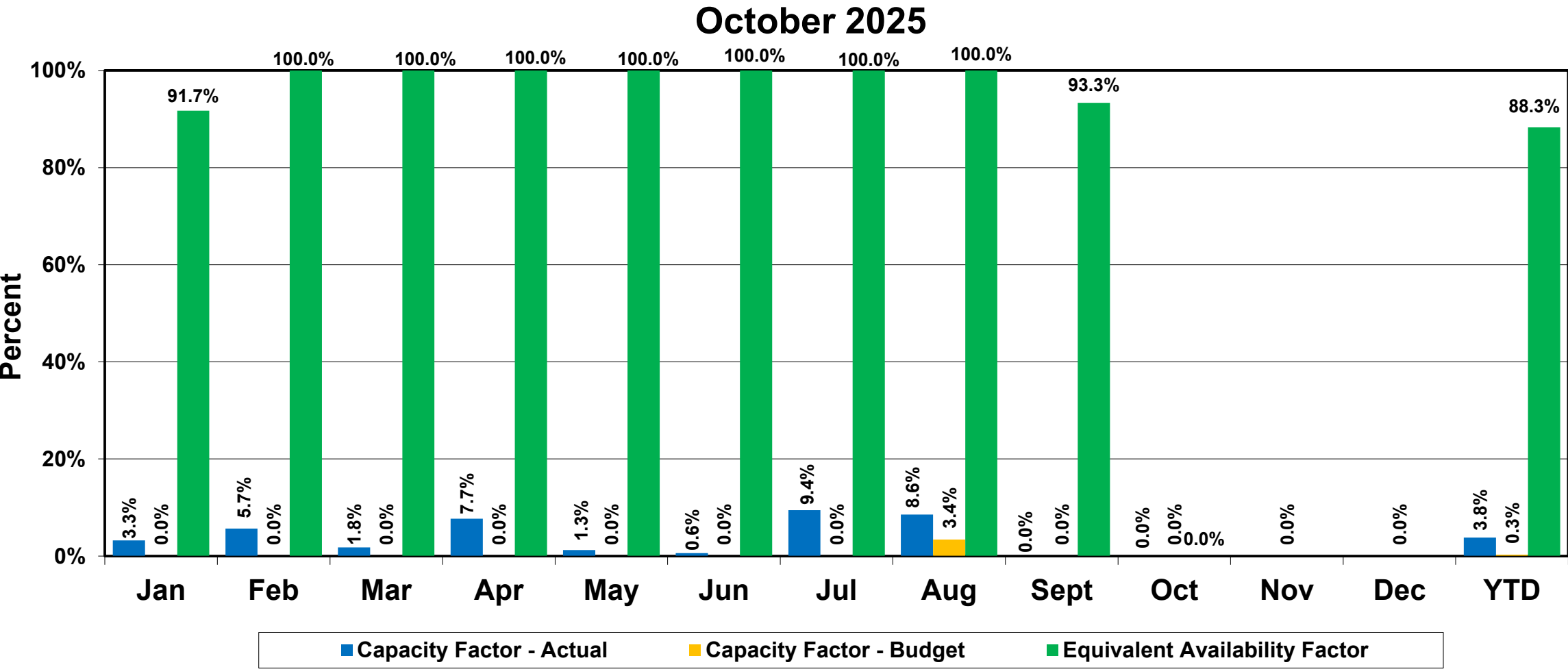
- Fall maintenance outage began on 9/29.



- ✓ Built in 1958 by CNPP&ID
- ✓ Purchased by NPPD in 1995
- ✓ Restarted facility in 1998
- ✓ 100 MW

Canada Station

Capacity & Equivalent Availability Factors



Beatrice Power Station



Significant Operating Events

- Planned fall outage began on 9/20 and ended early on 10/9.
- Forced derate on 10/17 due to fuel system issues leading to a forced outage taken on 10/18, issue was resolved same day.



✓ Completed in 2005

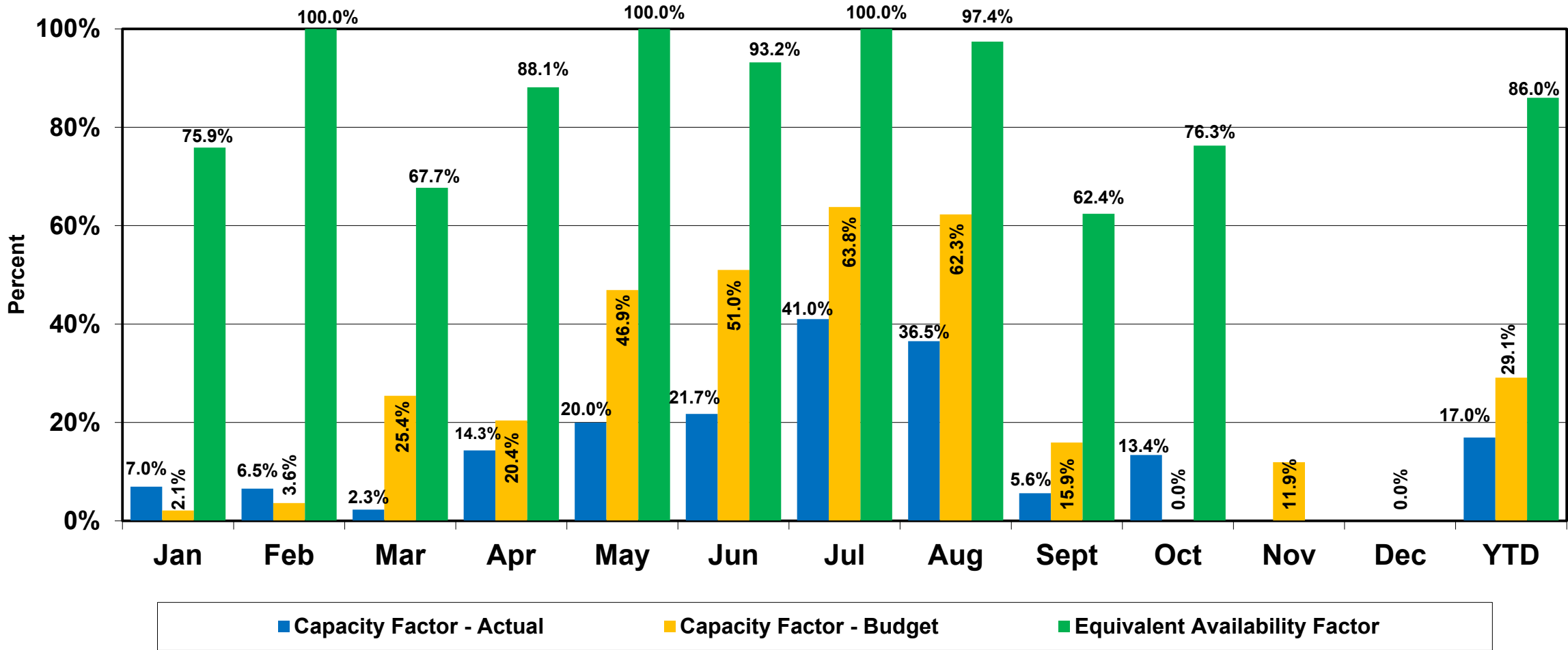
✓ 250 MW

- 80 MW each for Combustion Turbine
- 90 MW for Steam Turbine

Beatrice Power Station

Capacity & Equivalent Availability Factors

October 2025



Ainsworth Wind Turbines



Significant Operating Events

- **As of Nov 5th, there were two (2) turbines offline:**
 - ✓ One for pitch main pump motor issues (sourcing materials)
 - ✓ One shut off due to pitch cylinder leak (material on order)
- **Blade tip repair completed for the year.**

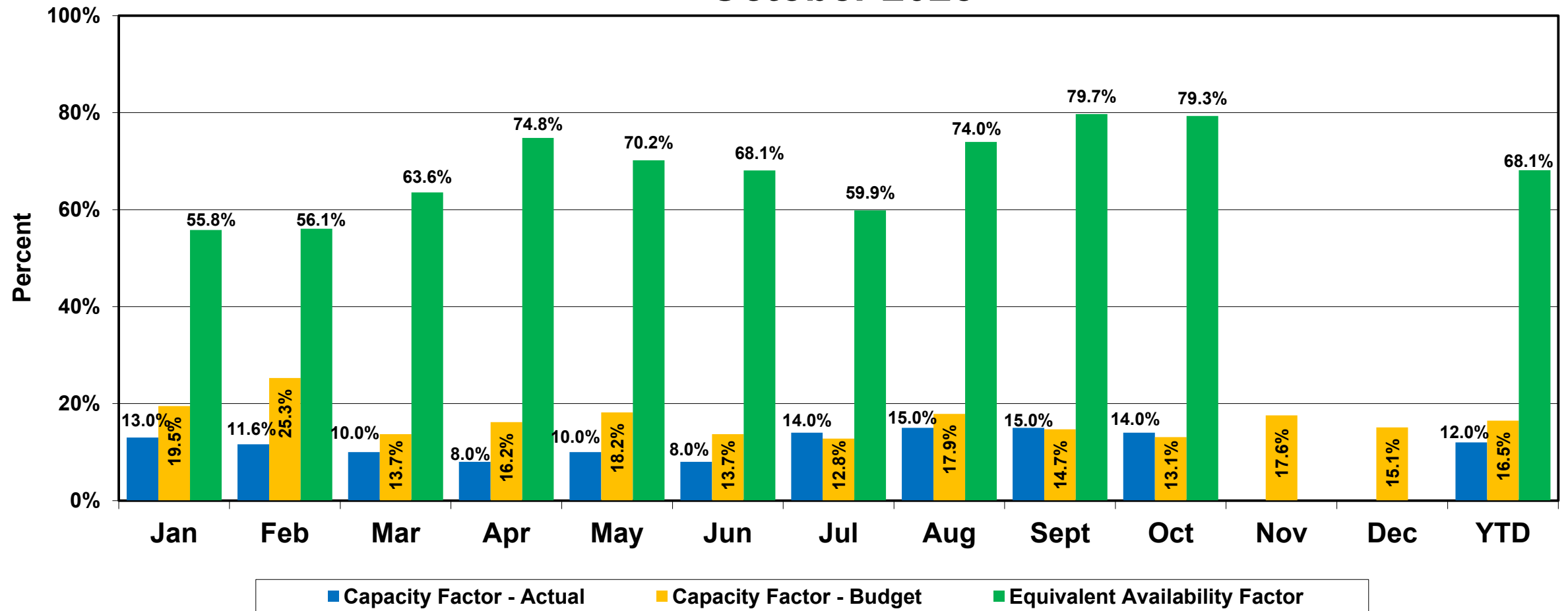


- ✓ NPPD Owned
- ✓ Commercial Operation: December 2005
- ✓ 60 MW total / NPPD Share: 32 MW
- ✓ 36 turbines
- ✓ 1.65 MW each
- ✓ Turbine blades 131 ft. long, tubular towers stand 230 ft. high

Ainsworth Wind Turbines

Capacity & Equivalent Availability Factors

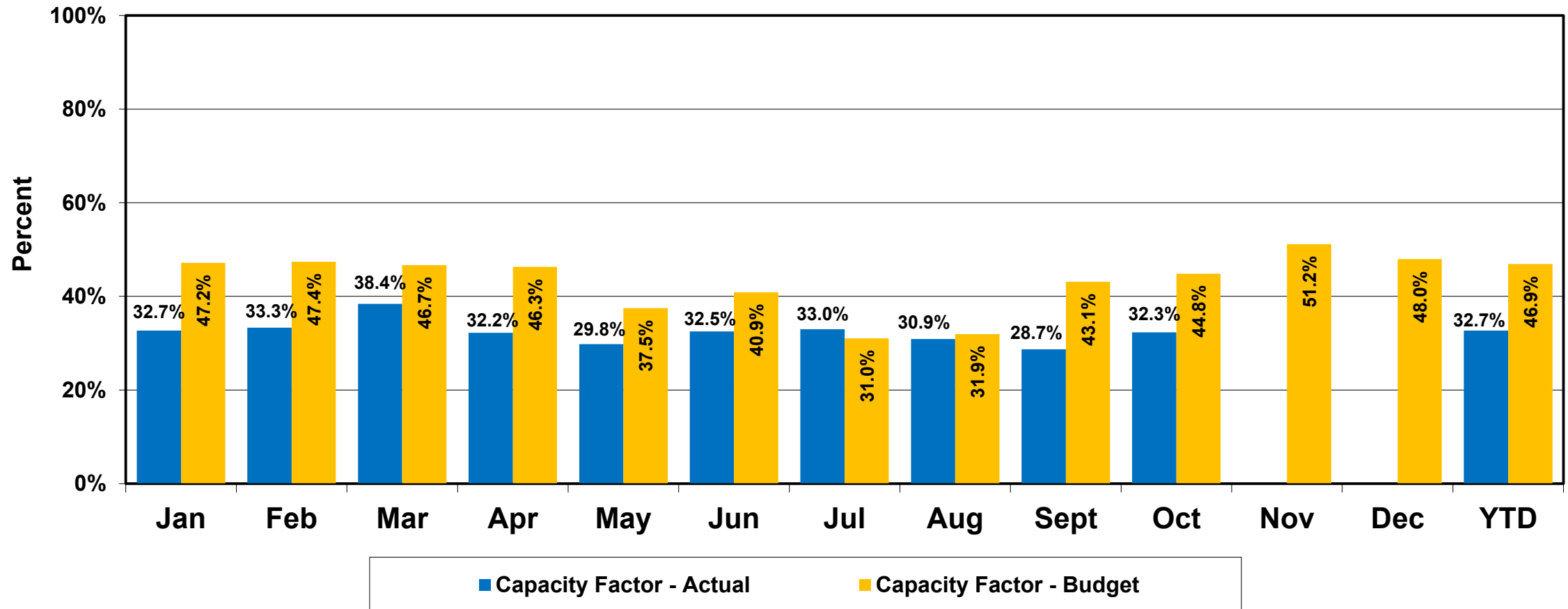
October 2025



PPA Wind Farm

Capacity Factor (average all combined)

October 2025

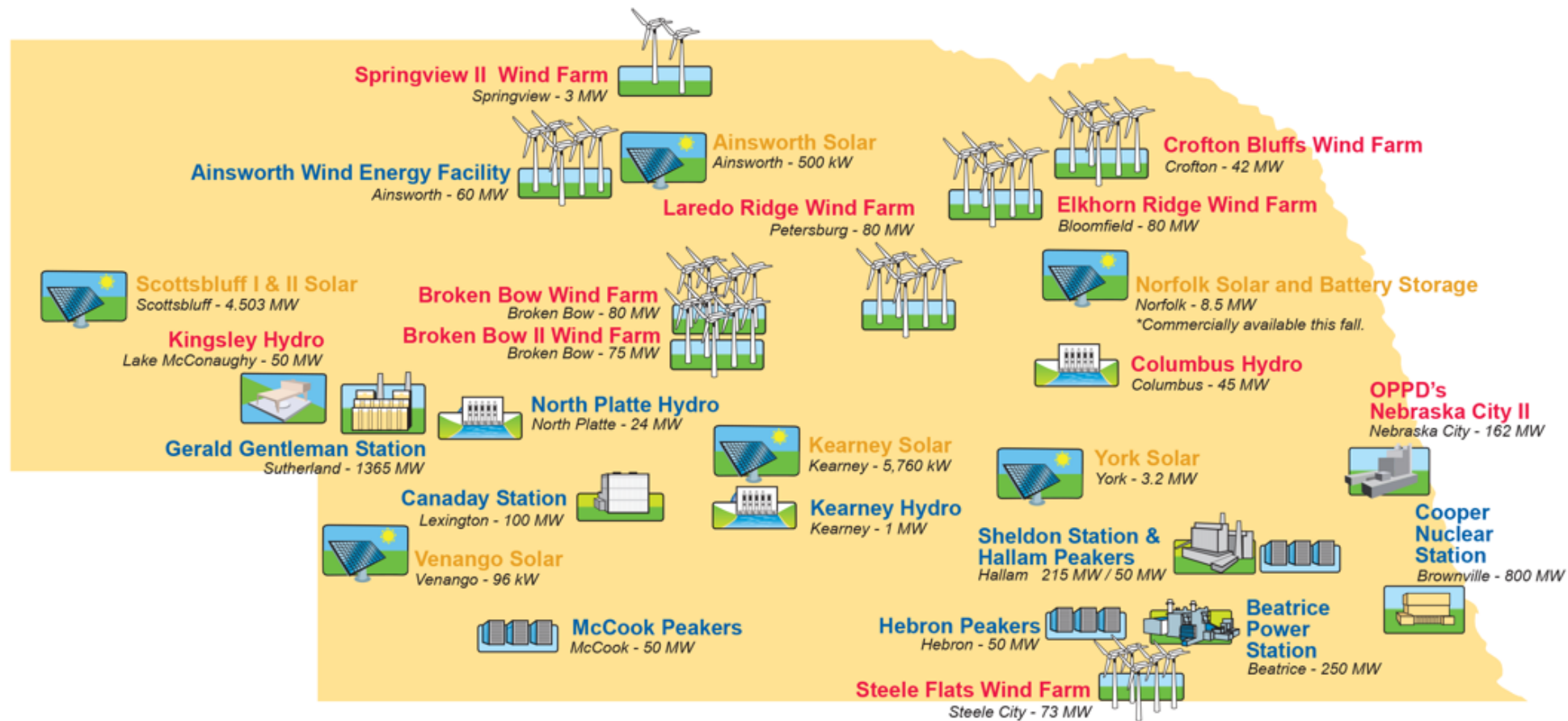


NORTH HUB FLIPS TO PREMIUM HUB IN OCTOBER, LMP UP \$10 Y/Y



- **Significant negative congestion seen in October, with DA LMPs falling \$5.69 below the DA MEC**
- **DART spread flips back to positive as we enter Fall**
- **Cash Henry Hub traded flat throughout the entire summer, averaging \$3.09 Apr-Oct**
- **Wind generation gaps up over 3 GW month-over month**

NPPD's Generation Profile



LEGEND

- NPPD Owned
- Power Purchase Agreement (All or Part)
- Retail Community Solar Locations