



# Production

## Monthly Performance Update

THE POWER OF PEOPLE

NPPD Board of Directors Meeting  
**Operations Committee**  
May 2025

Art Wiese - Vice President, Energy Production



Nebraska Public Power District

*Always there when you need us*

# Gerald Gentleman Station



## *Significant Operating Events*

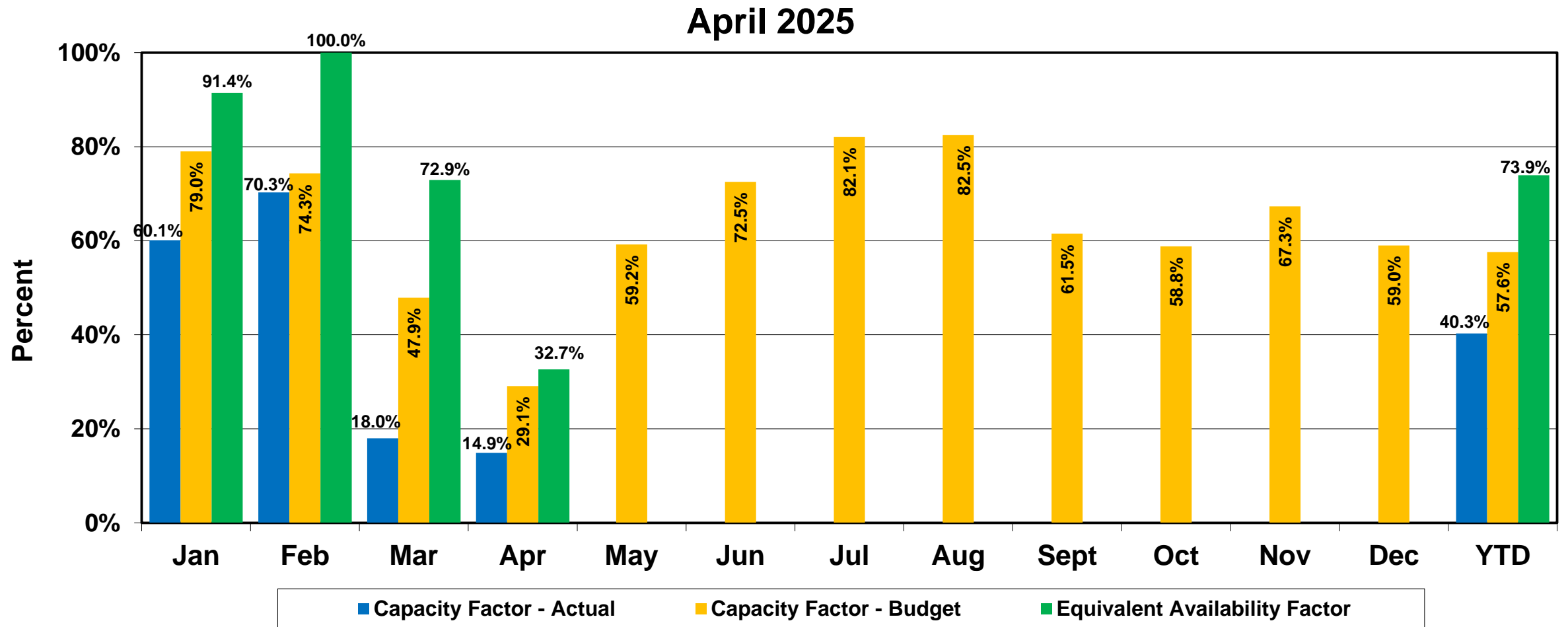
- **Unit 1:** Maintenance Outage continued. Came on-line April 10<sup>th</sup> and Operated per Market dispatch for rest of month.
- **Unit 2:** Continued Spring Outage In April.



- ✓ Unit 1 began operation in 1979  
665 MW
- ✓ Unit 2 began operation in 1982  
700 MW

# Gerald Gentleman Station

## *Capacity & Equivalent Availability Factors*



# Sheldon Station



## *Significant Operating Events*

- **Unit 1:** On April 2<sup>nd</sup>, forced derate due to loss of boiler feed pump. Returned, derated again same day due to boiler performance. Forced outage on 4<sup>th</sup> due to boiler tube rupture. On 10<sup>th</sup> due to tube leak, returned on 11<sup>th</sup>. Planned spring outage on 12<sup>th</sup>.
- **Unit 2:** On April 3<sup>rd</sup> and 9<sup>th</sup> forced derate due to boiler performance issues. Planned spring outage on the 11<sup>th</sup>.

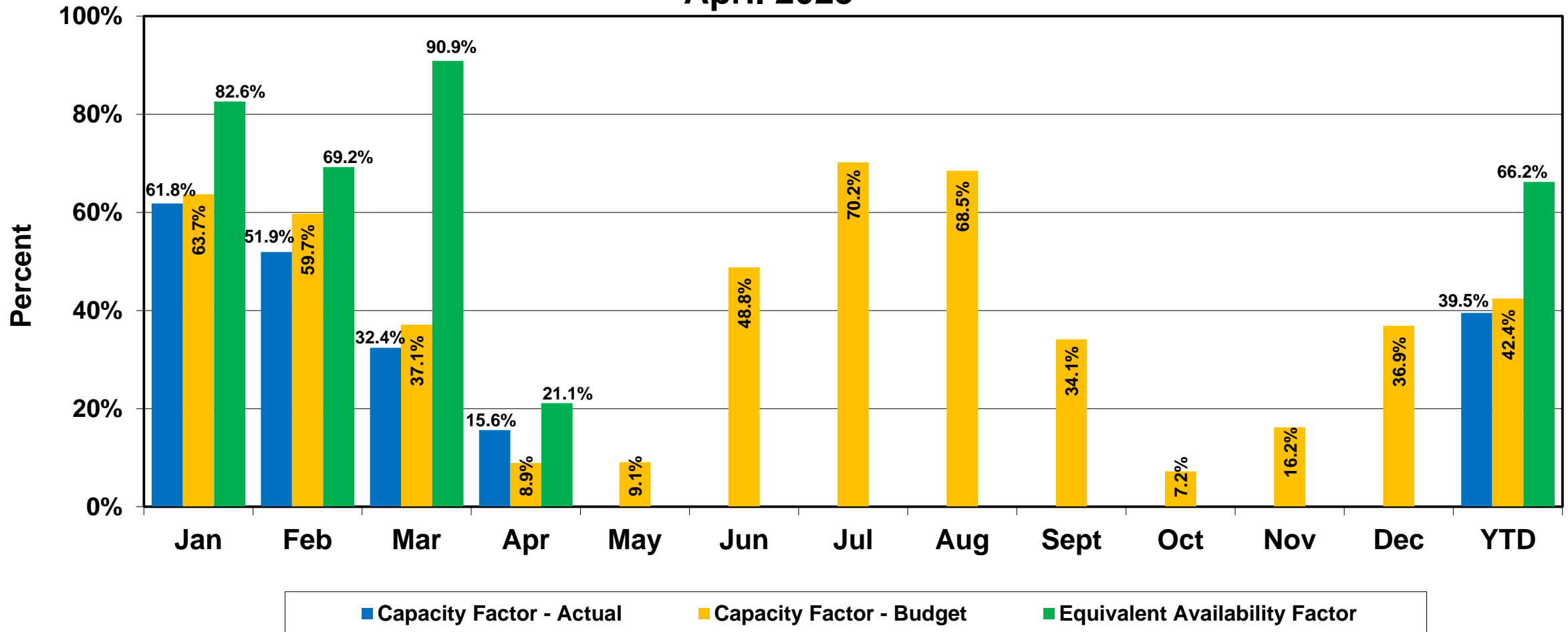


- ✓ Constructed between 1958 and 1963
- ✓ Nuclear portion decommissioned in 1964 then converted to coal and gas-fired boiler
- ✓ Unit 1 began operation in 1961 (105 MW) / Unit 2 began operation in 1968 (120 MW)
- ✓ Combined: 225 MW

# Sheldon Station

## Capacity & Equivalent Availability Factors

April 2025





# Canaday Station

## *Significant Operating Events*



- Operated per Market Dispatch in April.

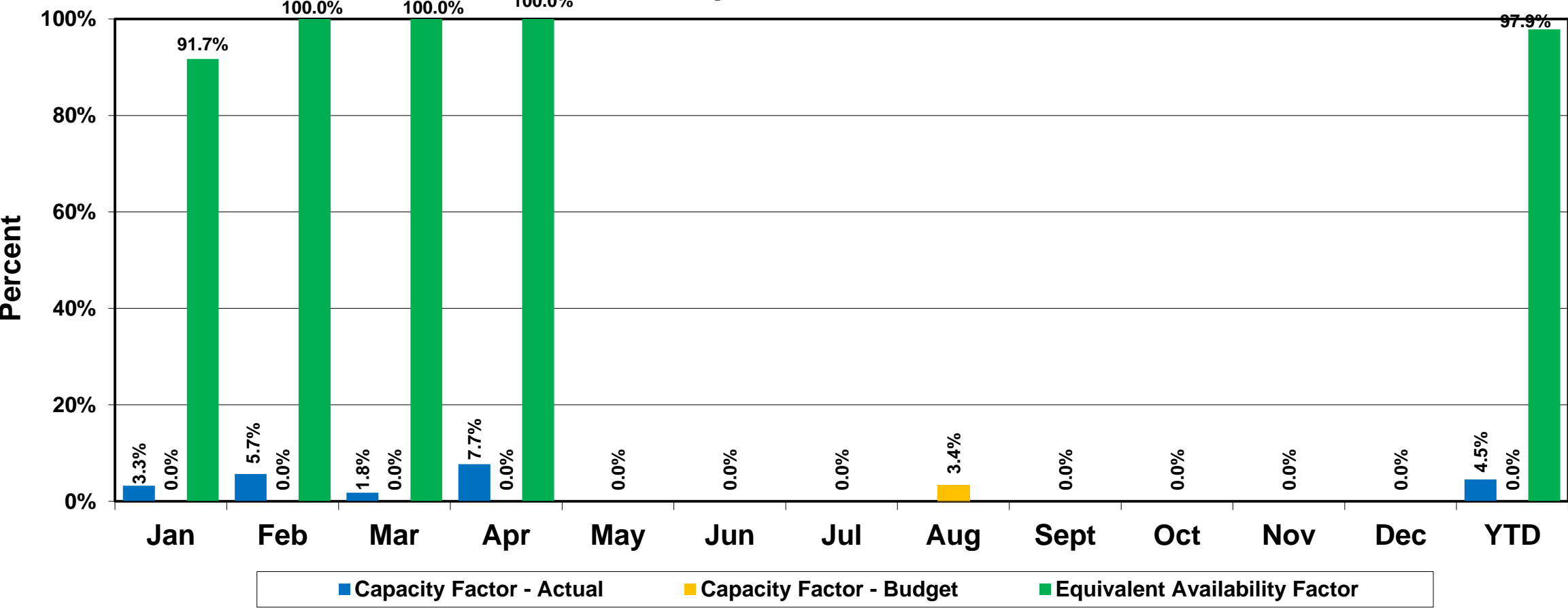


- ✓ Built in 1958 by CNPP&ID
- ✓ Purchased by NPPD in 1995
- ✓ Restarted facility in 1998
- ✓ 100 MW

# Canaday Station

## Capacity & Equivalent Availability Factors

April 2025



# Beatrice Power Station



## *Significant Operating Events*

- Spring outage finished on April 4<sup>th</sup> and operated per Market Dispatch after that.



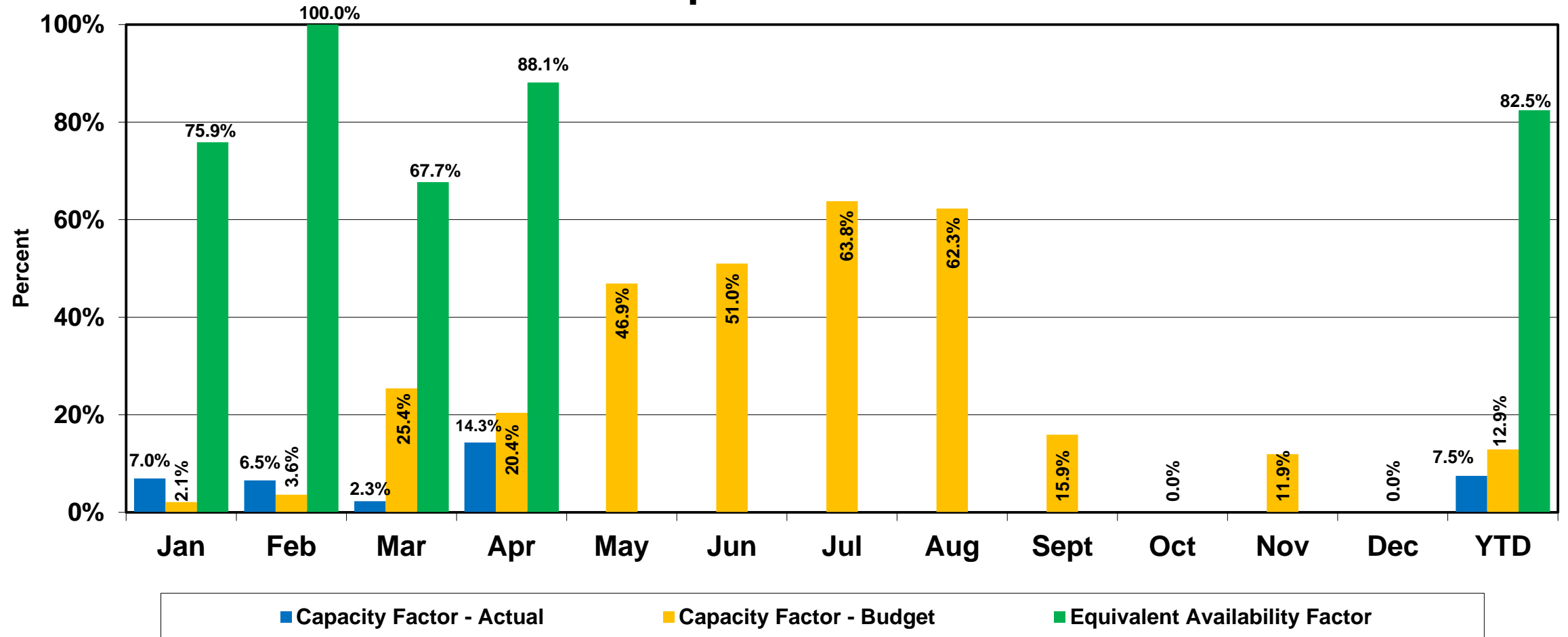
- ✓ Completed in 2005
- ✓ 250 MW
  - 80 MW each for Combustion Turbine
  - 90 MW for Steam Turbine



# Beatrice Power Station

## *Capacity & Equivalent Availability Factors*

April 2025



# Ainsworth Wind Turbines



## *Significant Operating Events*

- **C-20 services have begun and will continue this month.**
- **As of May 5<sup>th</sup>, there were six (6) turbines offline:**
  - ✓ One due to blade bearing to be replaced end of this month.
  - ✓ Three for pitch cylinder leaks and expected to be replaced this month.
  - ✓ Two remain offline until gearboxes replaced; scheduled for this month.

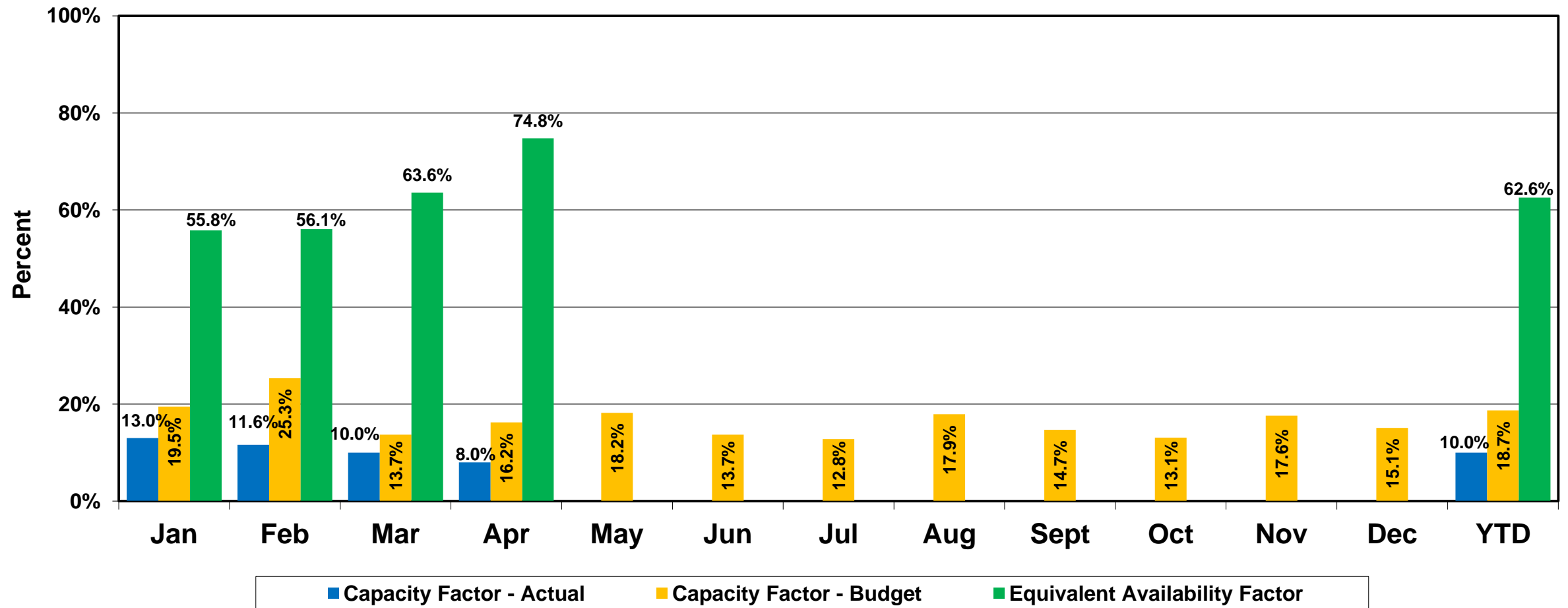


- ✓ NPPD Owned
- ✓ Commercial Operation: December 2005
- ✓ 60 MW total / NPPD Share: 32 MW
- ✓ 36 turbines
- ✓ 1.65 MW each
- ✓ Turbine blades 131 ft. long, tubular towers stand 230 ft. high

# Ainsworth Wind Turbines

## *Capacity & Equivalent Availability Factors*

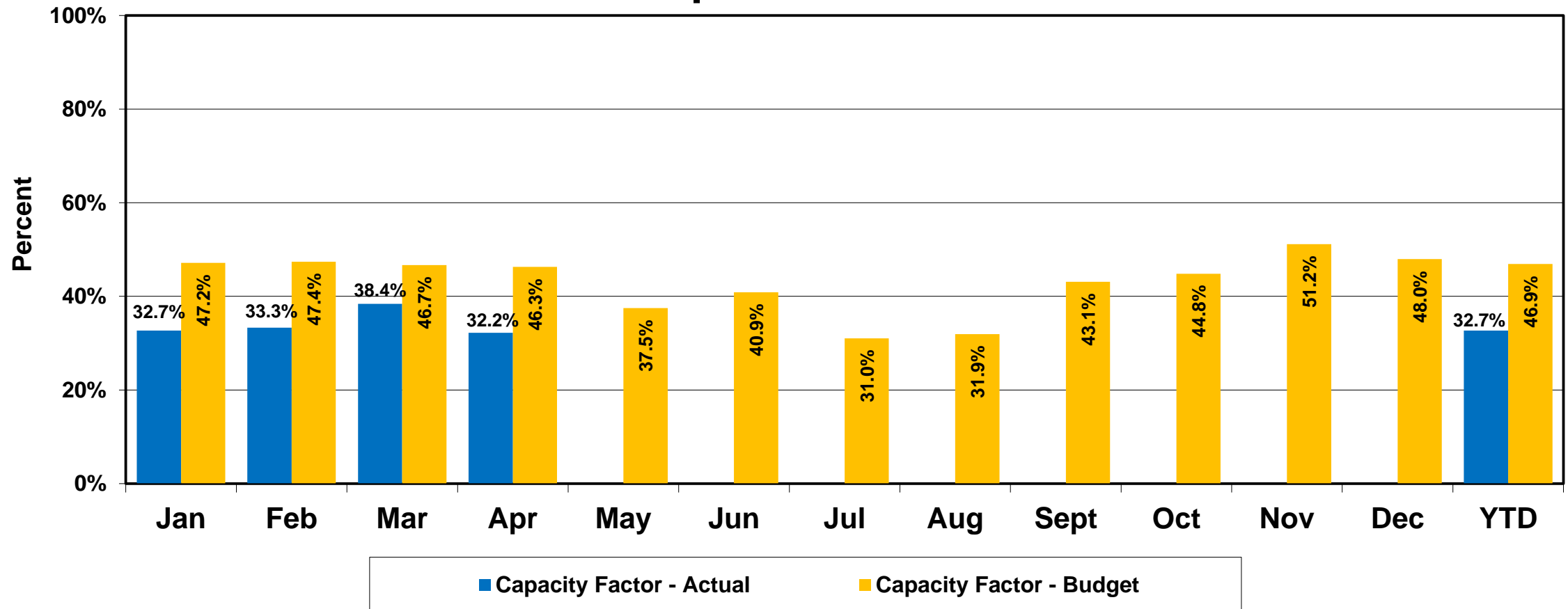
April 2025



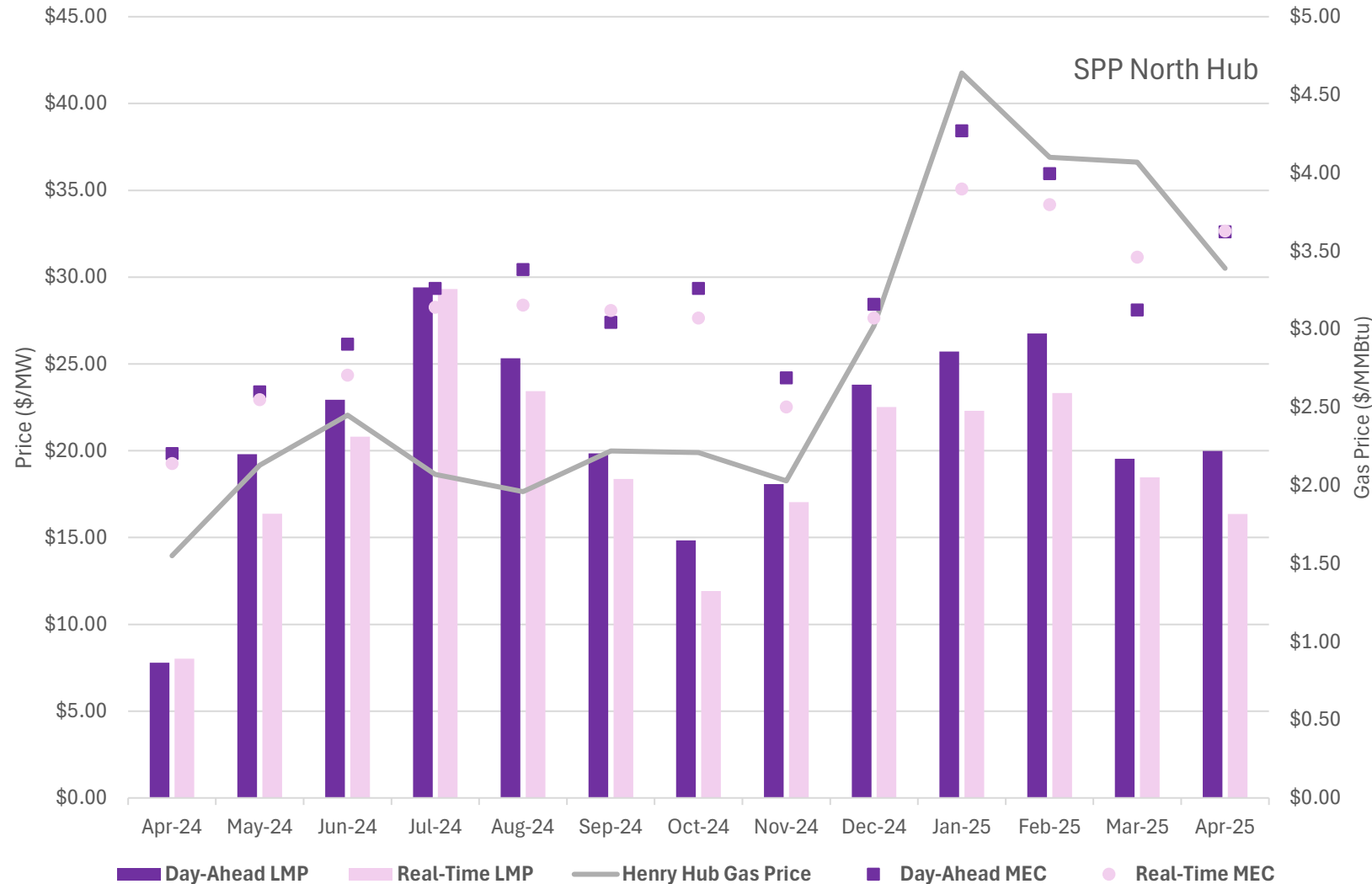
# PPA Wind Farm

## *Capacity Factor (average all combined)*

April 2025



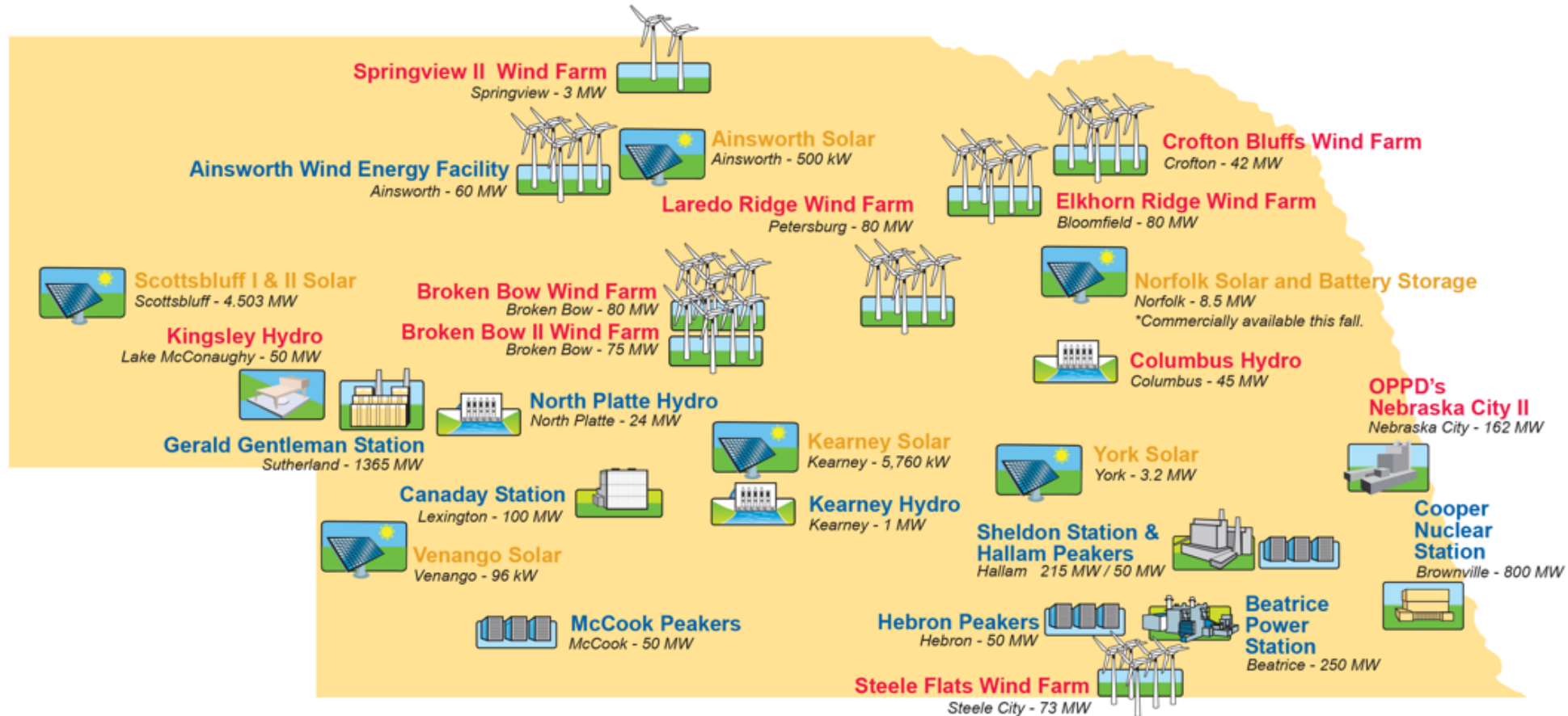
# SPP MEC increased 150% year-over-year in April due to higher gas prices



- Henry Hub pricing has been declining steadily through 2025, but are still up 119% from Apr24
- Day-Ahead LMP remain stagnant from March to April, increased 150% year-over-year on the backs of 1GW decline in average wind and elevated Gas prices
- Real-Time LMP's continue the trend of clearing under Day-Ahead, despite near identical MEC's



# NPPD's Generation Profile



## LEGEND

- NPPD Owned
- Power Purchase Agreement (All or Part)
- Retail Community Solar Locations