



Cooper Nuclear Station

Engineer's Certificate

Environmentally Qualified Motor Control Center Backplanes

THE
POWER OF
PEOPLE



NPPD Board of Directors Meeting
May 2025

Khalil Dia, CNS Site Vice President



Nebraska Public Power District
Always there when you need us

Environmentally Qualified (EQ) Motor Control Centers (MCCs) Background

- The EQ MCC components were replaced in the late 1980s. The EQ components are coming due for replacement as their **50 years qualified** life will be expiring.
- These components support the safe shut-down of the plant and maintain it in a **safe condition**.
- Westinghouse is the original equipment manufacturer and will manufacture the **backplanes** for each cubicle containing all the subcomponents necessary for the circuit.

EQ MCCs Scope

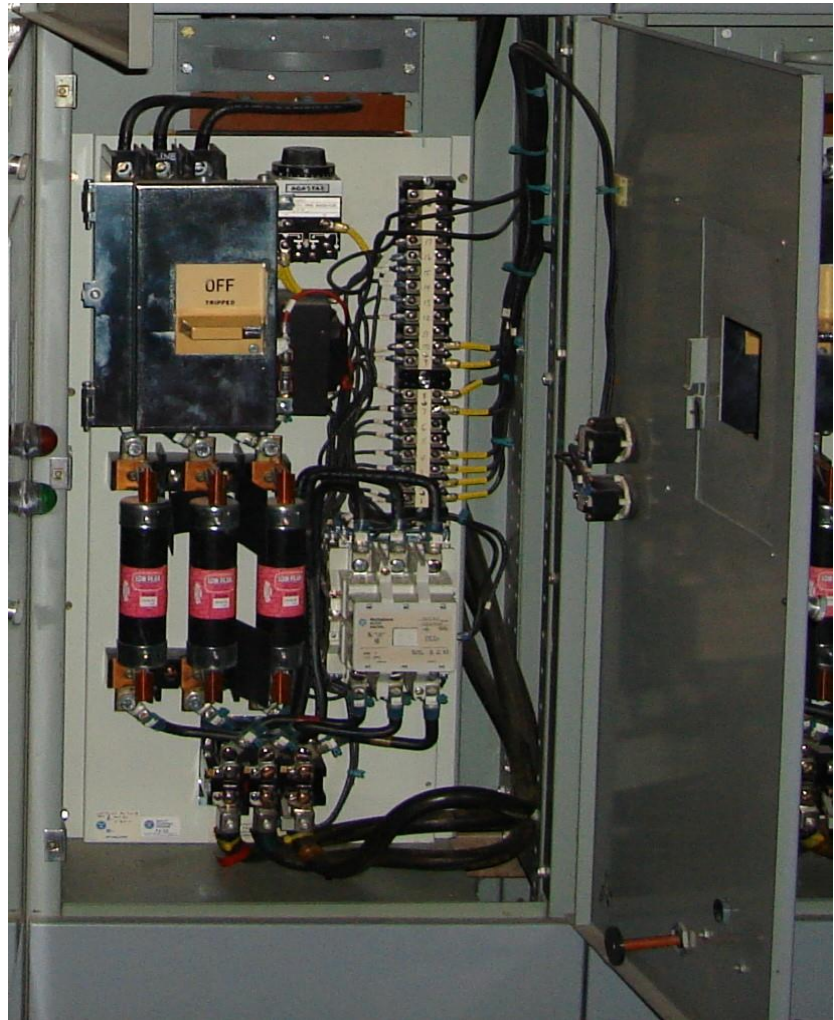
- **Procure 160** replacement EQ MCC compartment backplanes from Westinghouse.
- The EQ MCC components are scheduled to be replaced in **RE35 (2028), RE36 (2030), and RE37 (2032)**. The material has a long lead time and is expected to be received by RE35 (2028).
- **CNS personnel** will install/replace the 160 Westinghouse pre-assembled **compartment backplanes in 9** EQ MCCs.

EQ MCCs



EQ MCC

Subcomponents



Recommendation

Management recommends Board approval of an Engineer's Certificate with Westinghouse Electric Company, LLC, for the procurement of 160 environmentally qualified MCC backplanes to be installed in 9 MCCs at CNS, in an amount not to exceed \$2,900,000 plus performance bond costs.



THE POWER OF PEOPLE



Questions

Stay connected with us.



Nebraska Public Power District

Always there when you need us