



# Production

## Monthly Performance Update

THE POWER OF PEOPLE

NPPD Board of Directors Meeting  
**Operations Committee**  
April 2025

Art Wiese - Vice President, Energy Production



Nebraska Public Power District  
*Always there when you need us*

# Gerald Gentleman Station



## *Significant Operating Events*

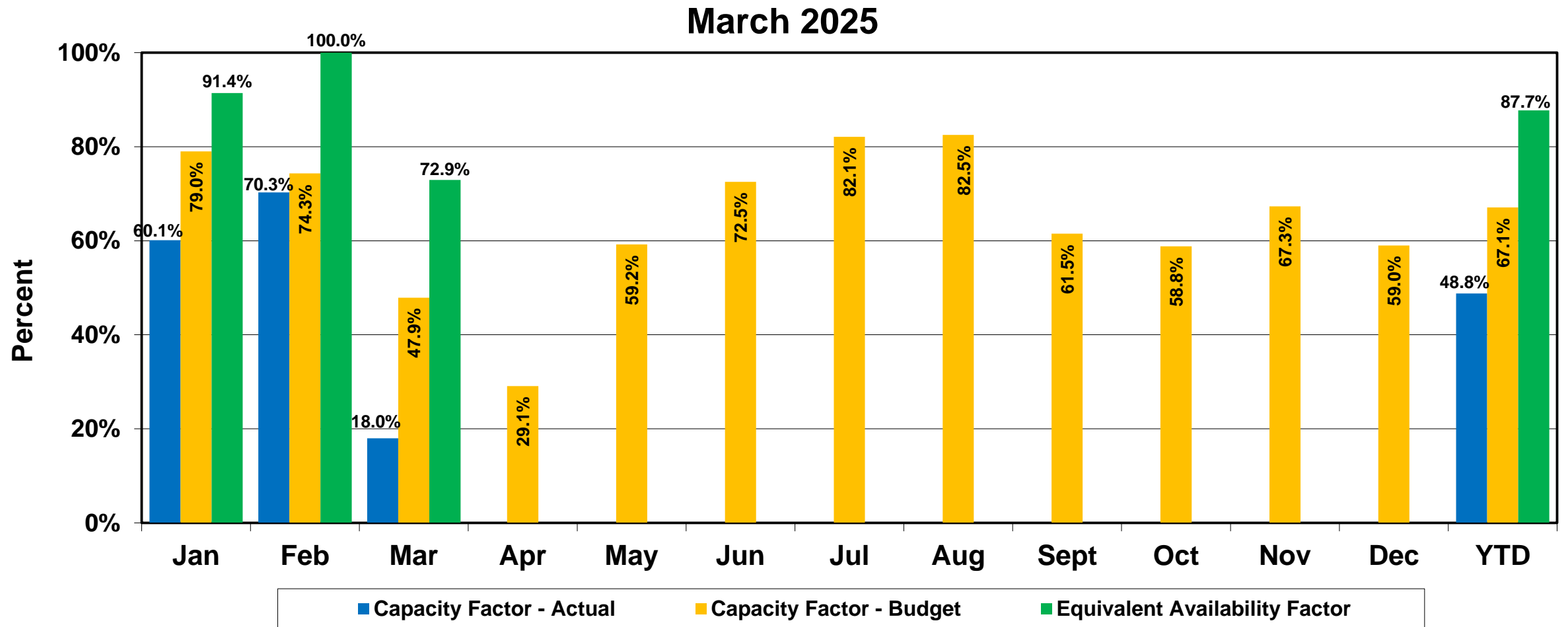
- **Unit 1:** In February, operated per market dispatch, Unit was de-committed on 2/26 by SPP. In March, operated per market dispatch. Maintenance outage began on March 27<sup>th</sup>.
- **Unit 2:** In February, operated per market dispatch. There was a forced outage on March 18<sup>th</sup> due to a failed insulator in the substation, return on 19<sup>th</sup>. Planned spring outage began on 21<sup>st</sup>



- ✓ Unit 1 began operation in 1979  
665 MW
- ✓ Unit 2 began operation in 1982  
700 MW

# Gerald Gentleman Station

## *Capacity & Equivalent Availability Factors*



# Sheldon Station



## *Significant Operating Events*

- **Unit 1:** Forced Derate on Feb. 10-12<sup>th</sup>, 18<sup>th</sup>, 20-21<sup>st</sup> due to boiler performance issues. Maintenance Outage on 2/22 to clean boiler, returned on 27<sup>th</sup>. Forced outage on March 15<sup>th</sup> due to tube leak; returned on 21<sup>st</sup>. Forced derate on 21<sup>st</sup> due to boiler performance.
- **Unit 2:** Forced Derate on Feb. 4-5<sup>th</sup> due to boiler fouling. Maintenance outage on 2/7 to address boiler issues, returned on 11<sup>th</sup>. Unit was decommitted on 2/26 by SPP. Maintenance outage started on 2/27, returned on 3/1. Maintenance derate on March 7<sup>th</sup> due to feeder C motor issues; returned later that day; Forced derate on 31<sup>st</sup> due to boiler performance issues.



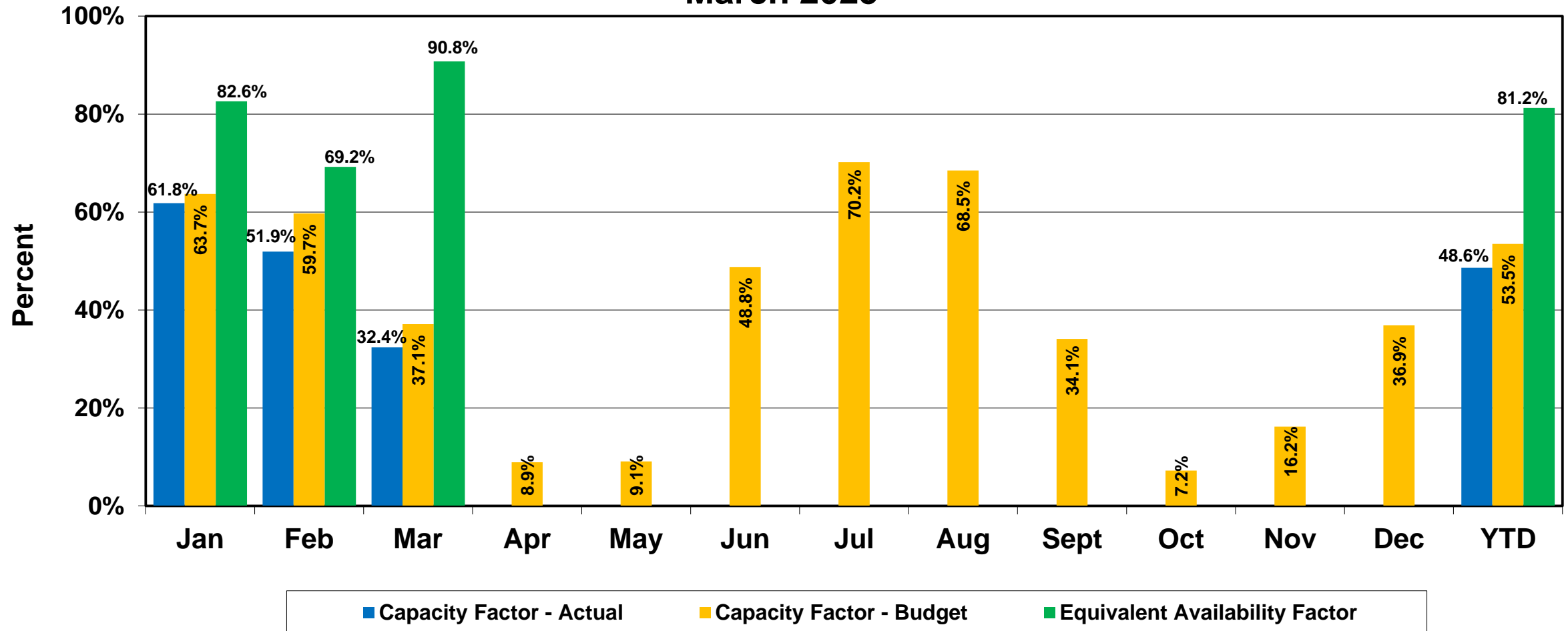
- ✓ Constructed between 1958 and 1963
- ✓ Nuclear portion decommissioned in 1964 then converted to coal and gas-fired boiler
- ✓ Unit 1 began operation in 1961 (105 MW) / Unit 2 began operation in 1968 (120 MW)
- ✓ Combined: 225 MW



# Sheldon Station

## *Capacity & Equivalent Availability Factors*

March 2025



# Canaday Station

## *Significant Operating Events*



- Operated per Market Dispatch in February and March.

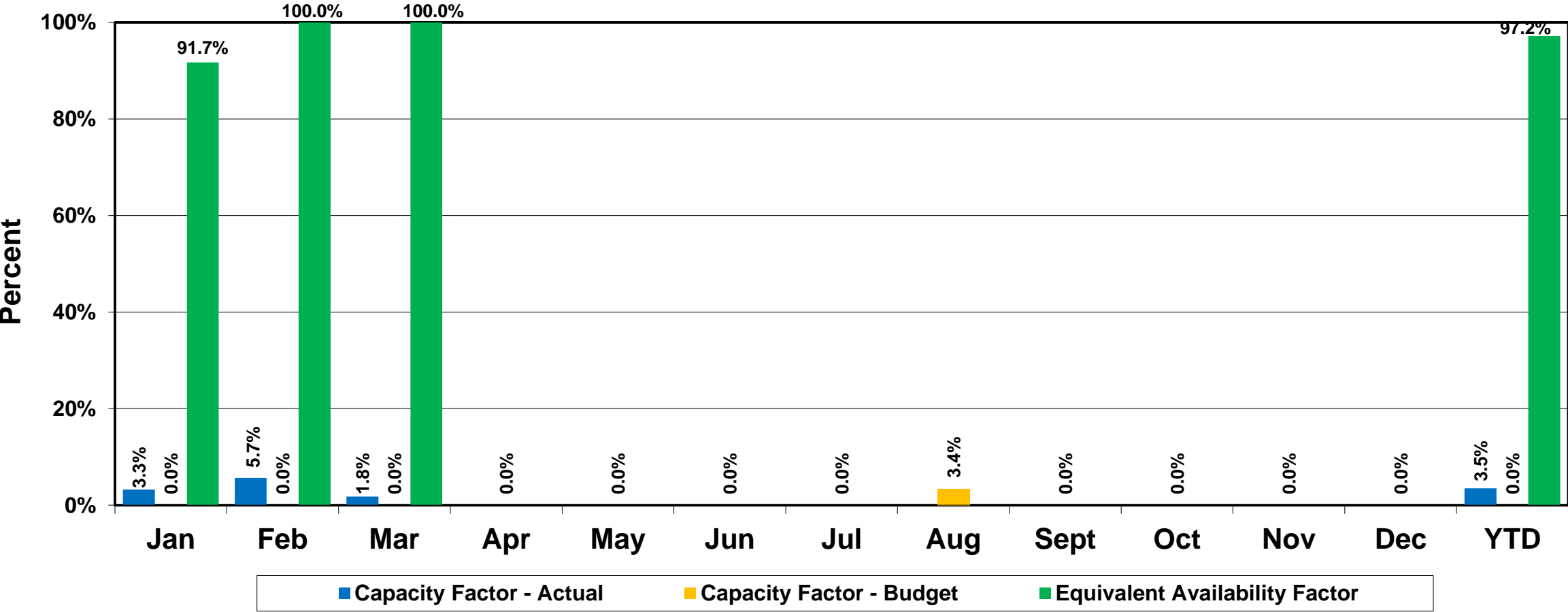


- ✓ Built in 1958 by CNPP&ID
- ✓ Purchased by NPPD in 1995
- ✓ Restarted facility in 1998
- ✓ 100 MW

# Canaday Station

## *Capacity & Equivalent Availability Factors*

March 2025



# Beatrice Power Station



## *Significant Operating Events*

- Operated per Market Dispatch in February and March. Planned outage on March 22<sup>nd</sup> due to implementing spring outage.



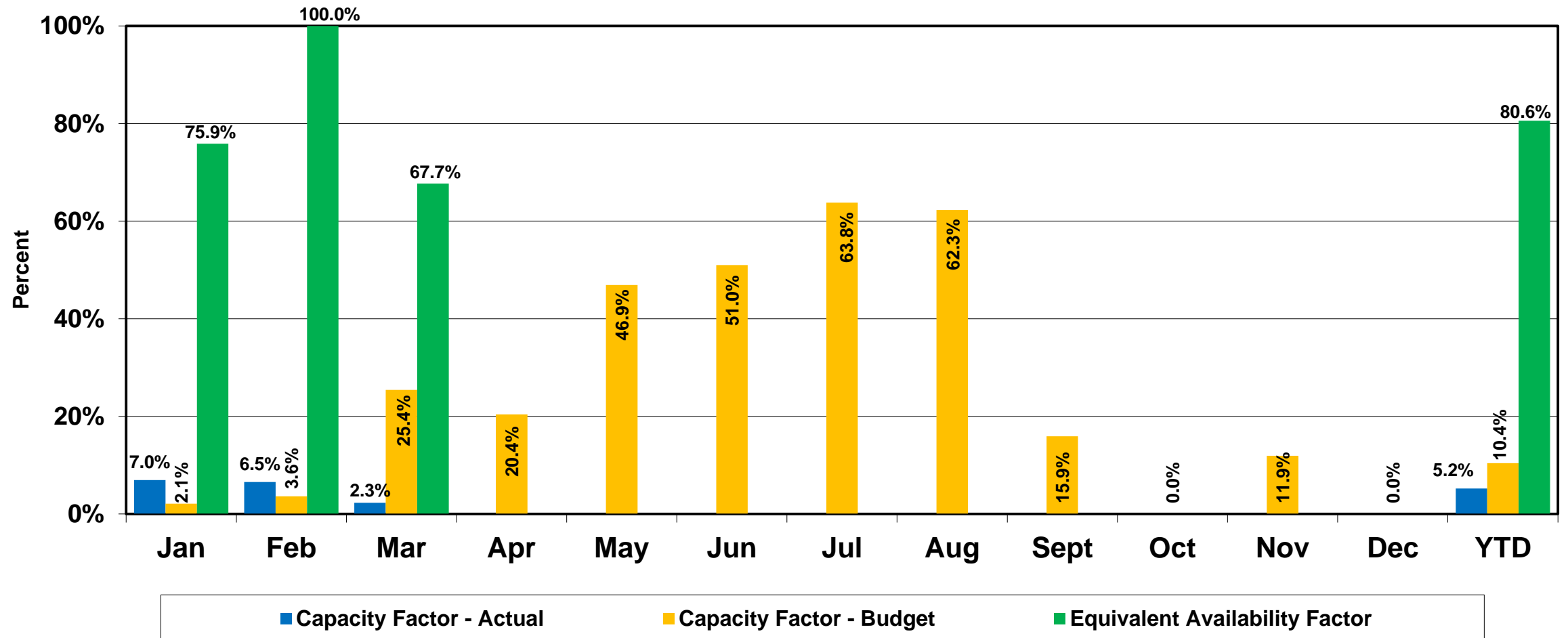
- ✓ Completed in 2005
- ✓ 250 MW
  - 80 MW each for Combustion Turbine
  - 90 MW for Steam Turbine



# Beatrice Power Station

## *Capacity & Equivalent Availability Factors*

March 2025



# Ainsworth Wind Turbines



## *Significant Operating Events*

- **As of April 4<sup>th</sup>, there are eight (8) turbines offline**
  - ✓ One due to blade bearing/pitch cylinder issue.
  - ✓ One needs high-speed shaft and IMS bearings replaced.
  - ✓ Four off-line for pitch cylinder leaks and scheduled this month.
  - ✓ Two will remain offline until gearboxes are replaced, tentatively in May.

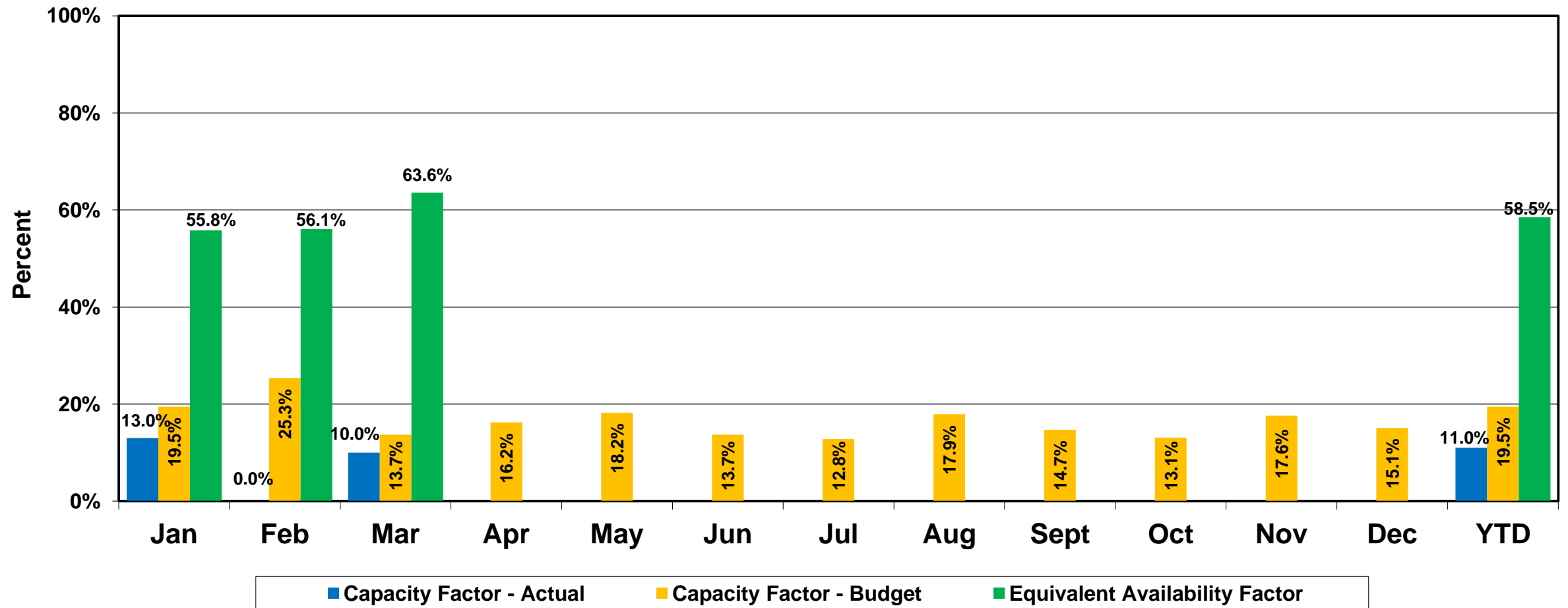


- ✓ NPPD Owned
- ✓ Commercial Operation: December 2005
- ✓ 60 MW total / NPPD Share: 32 MW
- ✓ 36 turbines
- ✓ 1.65 MW each
- ✓ Turbine blades 131 ft. long, tubular towers stand 230 ft. high

# Ainsworth Wind Turbines

## *Capacity & Equivalent Availability Factors*

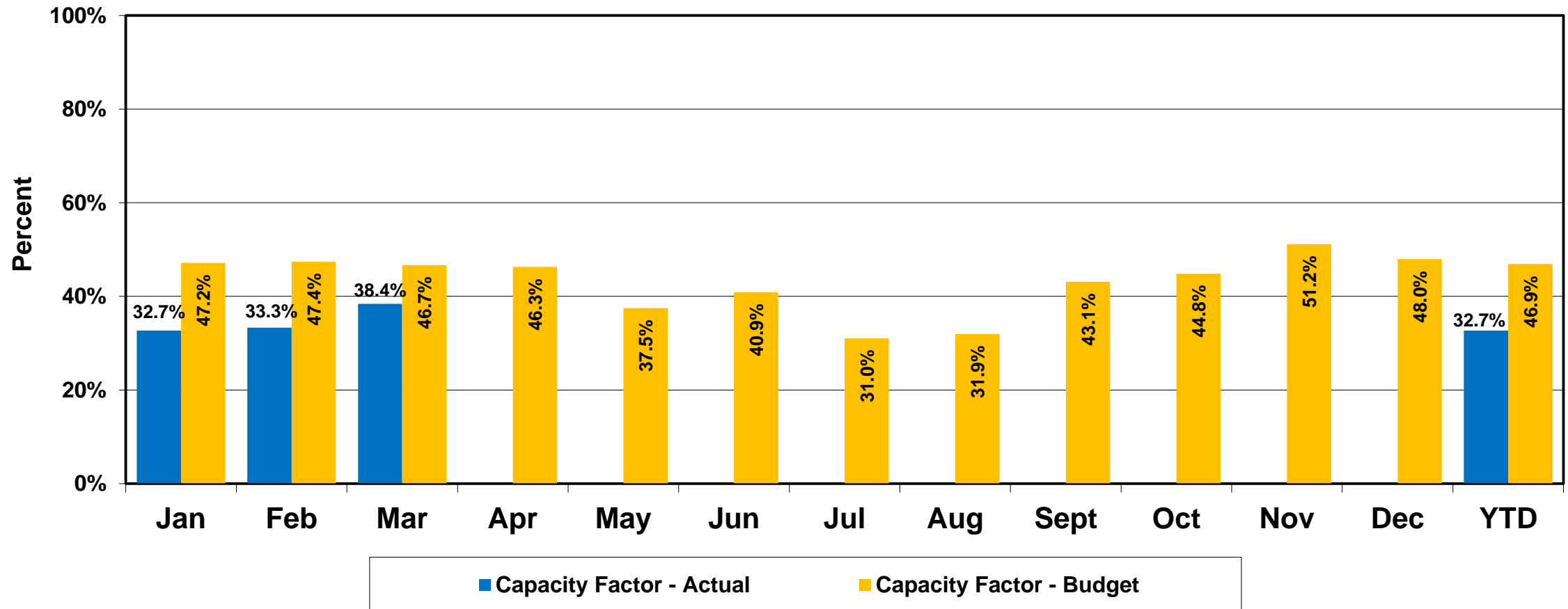
March 2025



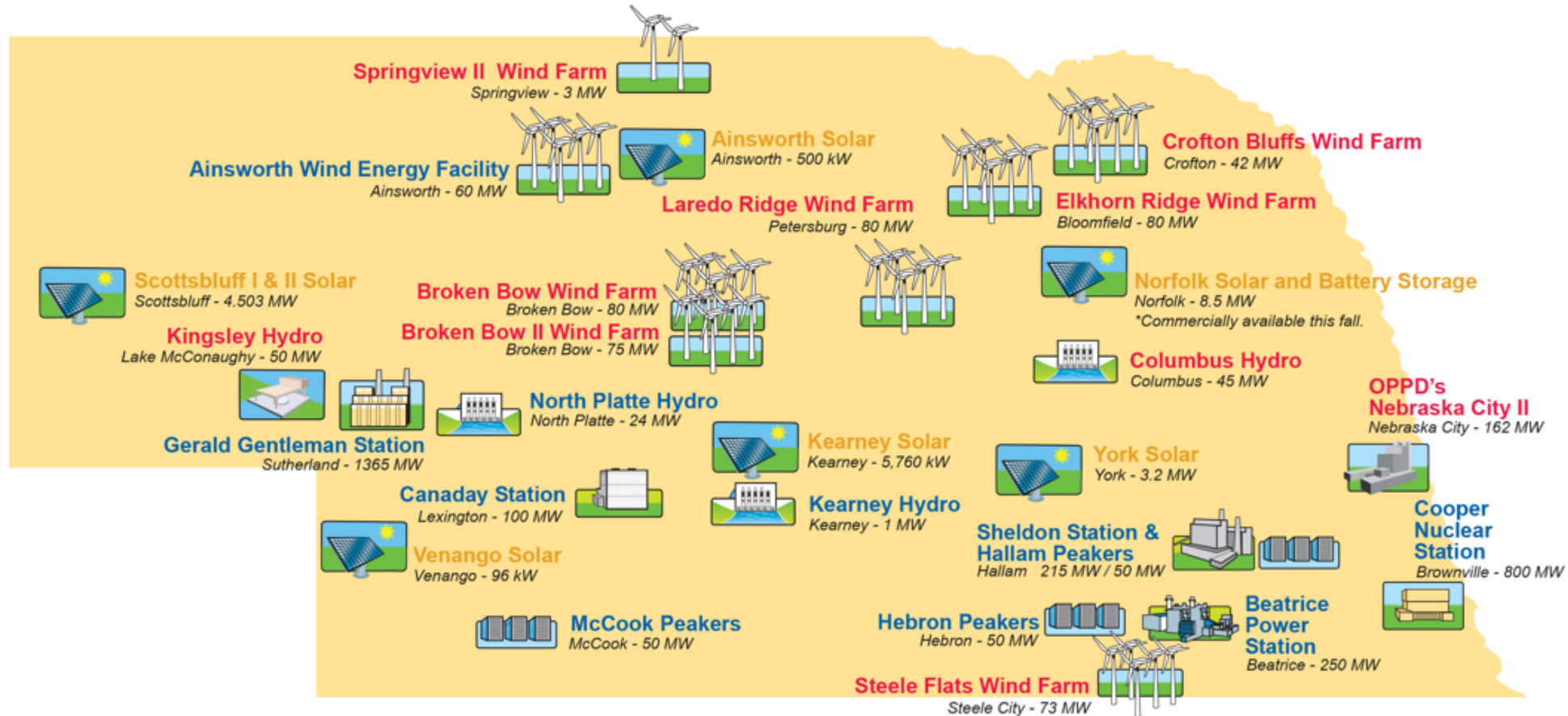
# PPA Wind Farm

## *Capacity Factor (average all combined)*

March 2025



# NPPD's Generation Profile



## LEGEND

- NPPD Owned
- Power Purchase Agreement (All or Part)
- Retail Community Solar Locations