



Board Strategic Directive BP-SD-04, Cost Competitiveness - Retail Rate Position

THE POWER OF PEOPLE



NPPD Board of Directors
Strategic Business Matters

December 2024

Pat Hanrahan - General Manager of Retail



Nebraska Public Power District
Always there when you need us

BP-SD-04 Requirement

- **To Achieve Cost Competitiveness, the District standard shall be:**

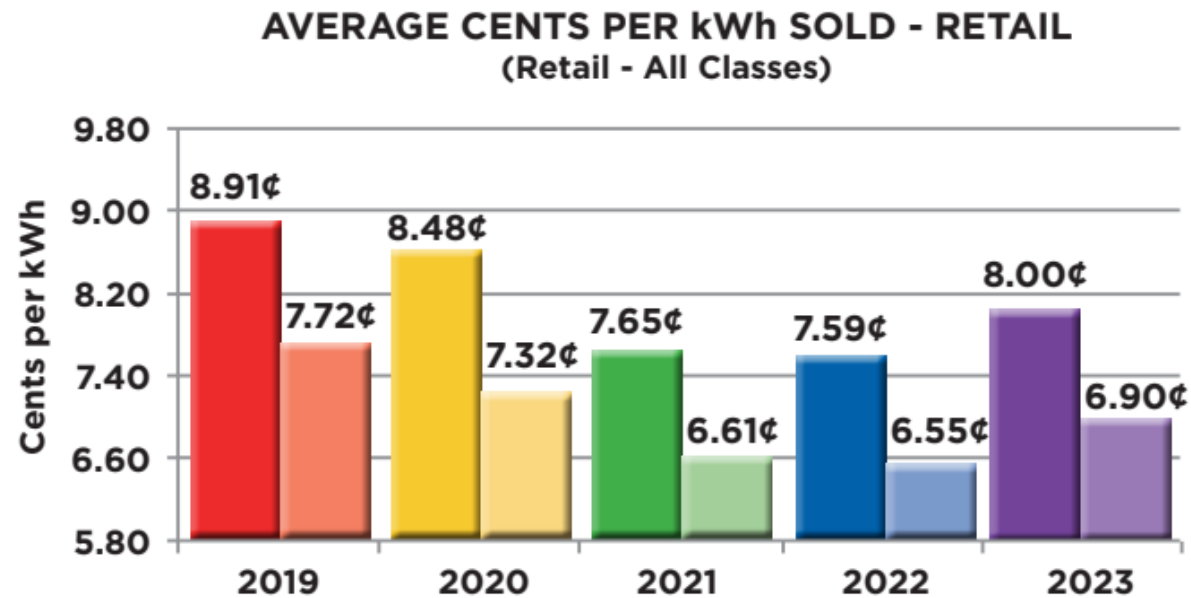
- ❖ Achieve and maintain “total” retail base rate position among the lowest 15 percent of providers within the Energy Information Administration (EIA).

Total rate = total revenue from all customer classes divided by total kilowatt hours of all customer classes.

- ❖ Current EIA data is for calendar year 2023

EIA Rate Position

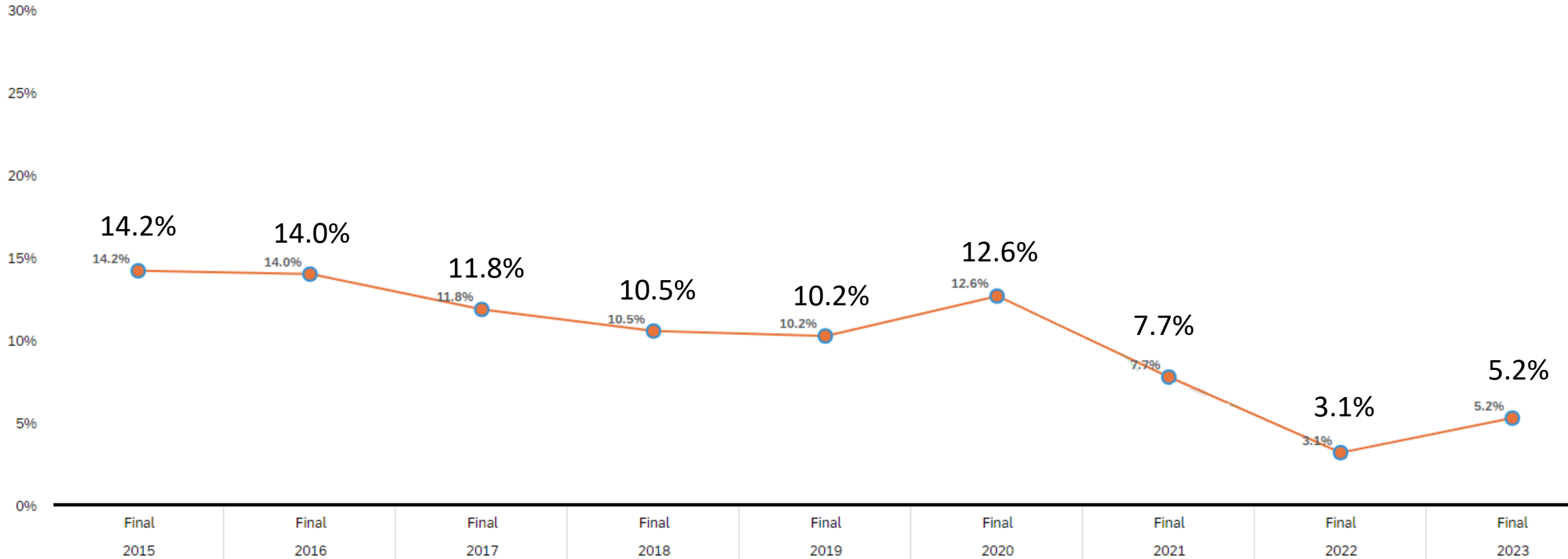
- ❖ 2023 EIA position is at the 5.2 percentile rank!
- ❖ Up from 3.1 percentile rank in 2022
- ❖ 2,644 Utilities Submitted 2023 Data



■ Average Cents per kWh Sold

■ Average Cents per kWh Sold Less Government Taxes/Transfers

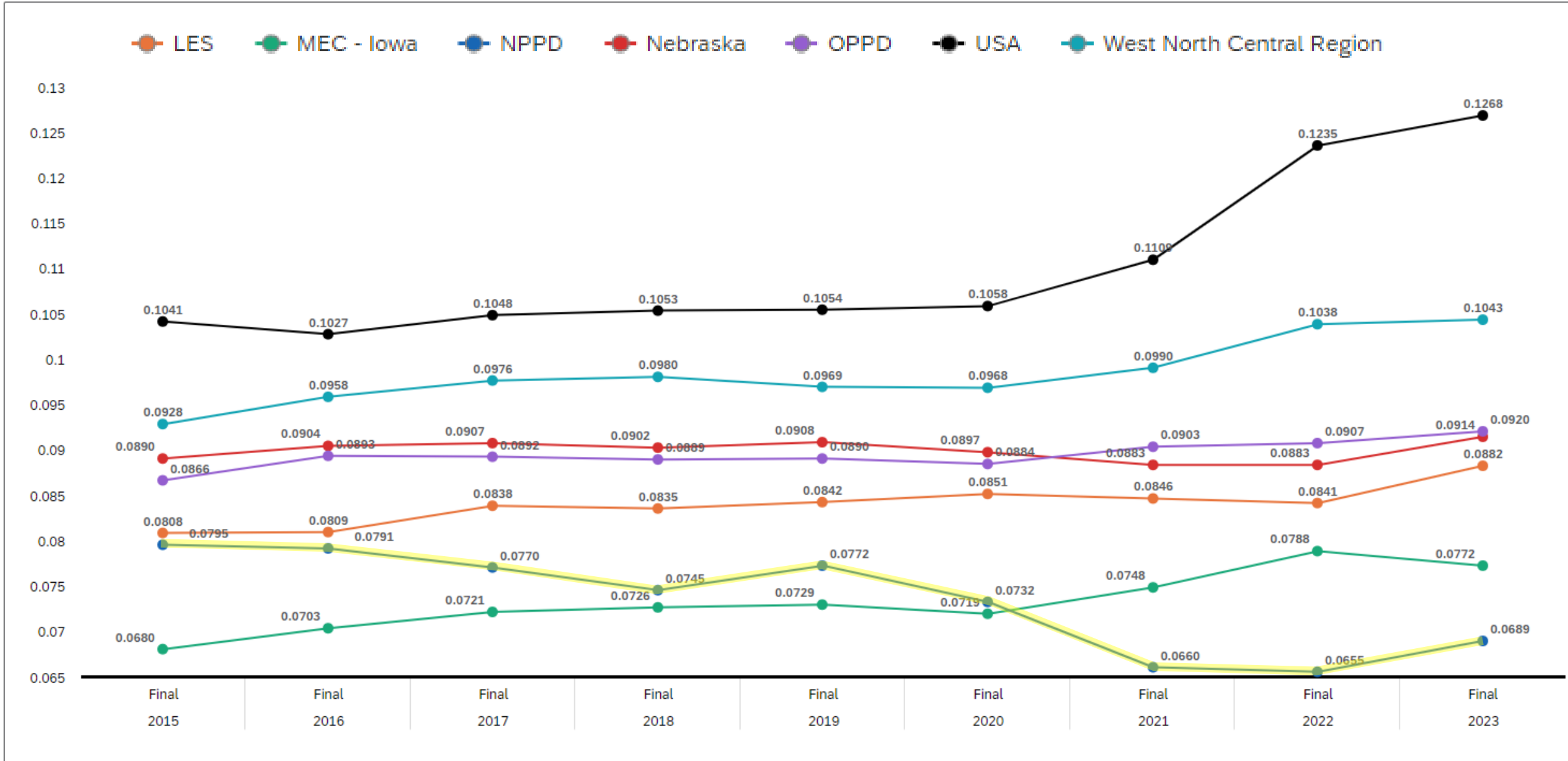
All EIA Utilities Without Lease Payment & Gross Revenue Tax



Source: [EIA Form 861 - Annual Electric Power Industry Report](#) Total Data.

- Data shown with and without NPPD Lease Payments and Gross Revenue Taxes.
- Data includes Part C- 'Delivery' for Revenue but excludes it for Sales to avoid double counting.
- Data includes Utility Numbers 88888 (Withheld) and 99999 (Adjustments).

Regional Rate Comparison



Source: [EIA Form 861 - Annual Electric Power Industry Report](#) Total Data.

- Included lease payments and gross revenue taxes data: Not Included
- The West North Central Region consists of Iowa, Kansas, Minnesota, Missouri, Nebraska, North Dakota, and South Dakota.

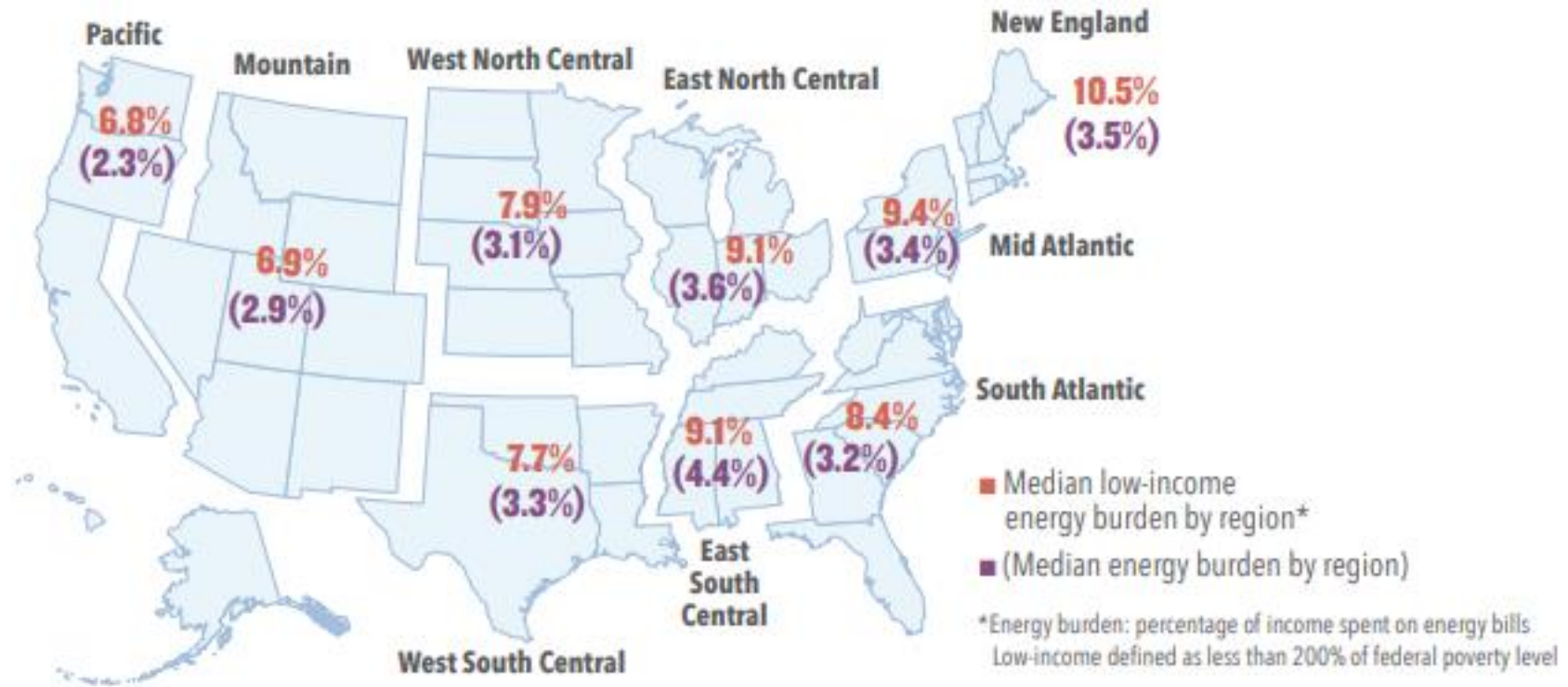
What is Energy Burden

$$\text{Energy Burden} = \frac{\text{Annual Home Energy Bills}}{\text{Annual Income}}$$

Includes impacts from Electricity, Natural Gas, and other heating and cooling fuel sources

High energy burden > 6%

Severe energy burden > 10%



Electricity Burden

$$\text{Electricity Burden} = \frac{\text{Annual Electricity Bill}}{\text{Annual Income}}$$

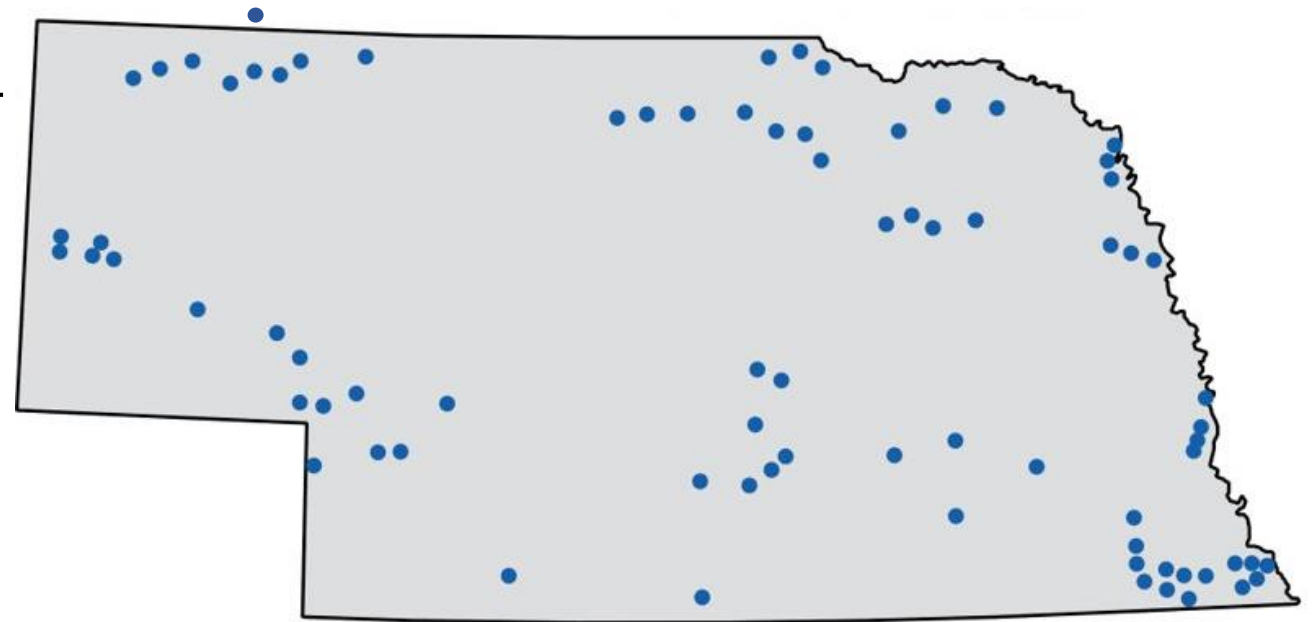
NPPD Retail Residential Electricity Burden

Minimum = 1.65%

Average = 2.53%

Maximum = 3.80%

NPPD Retail Communities = 2.53%

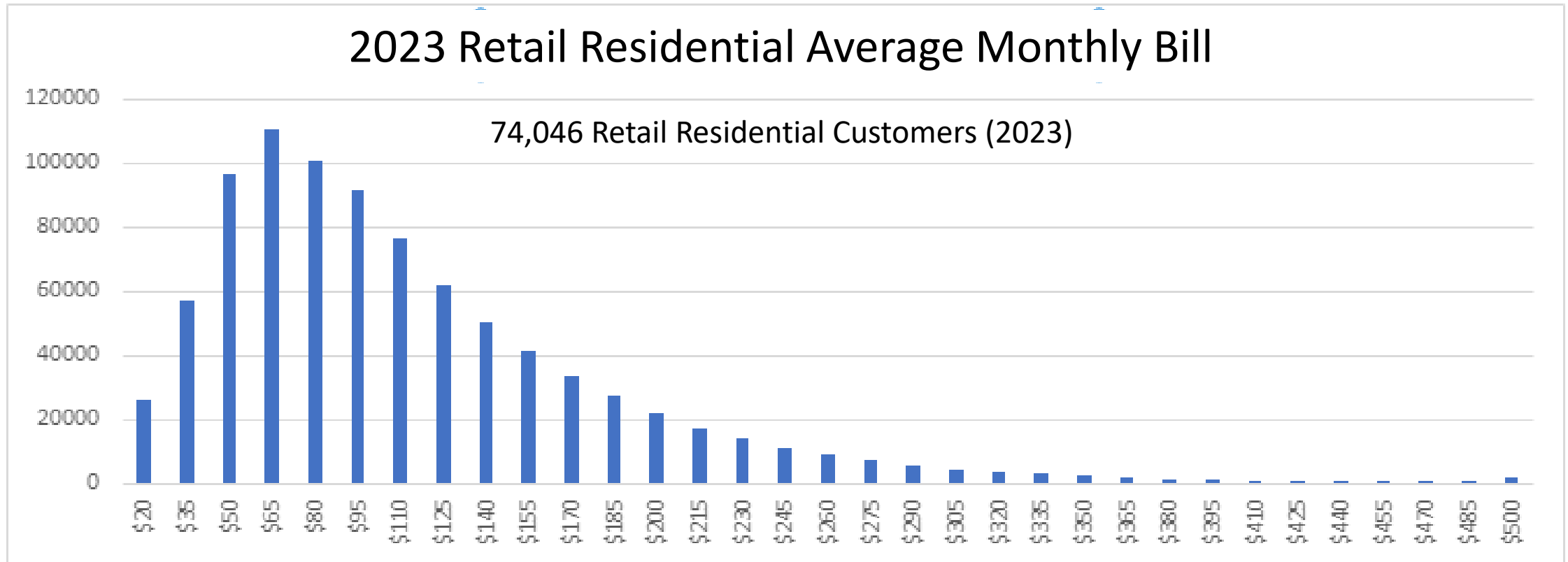


NPPD Residential Account Data

Summary of 2023 Residential Aged Debt

	Q1	Q2	Q3	Q4
% of Accounts Current	90.0%	89.7%	89.8%	89.1%
% of Accounts in Arrears	10.0%	10.3%	10.2%	10.9%
Total Aged Debt >30 Days <90 Days	\$277,861	\$356,557	\$316,762	\$282,737
Total Aged Debt 91+ Days	\$16,181	\$14,326	\$14,098	\$11,971
Number of Accounts >30 Days <90 Days	2,912	3,758	3,148	3,030
Number of Accounts 91+ Days	167	67	143	165

NPPD Residential Average Monthly Bill



Average Residential Monthly Bill	\$121.58
---	-----------------

61.32% of NPPD Residential Customer Bills are less than the Monthly Average

Impact of Assistance Programs Residential

Pennies for Power

Nebraska 211 – United Way of the Midlands

LIHEAP – Low Income Home Energy Assistance Program

- ACCESSNebraska

Nebraska Department of Health and Human Services

NebraskaHAF (Homeowner Assistance Fund)

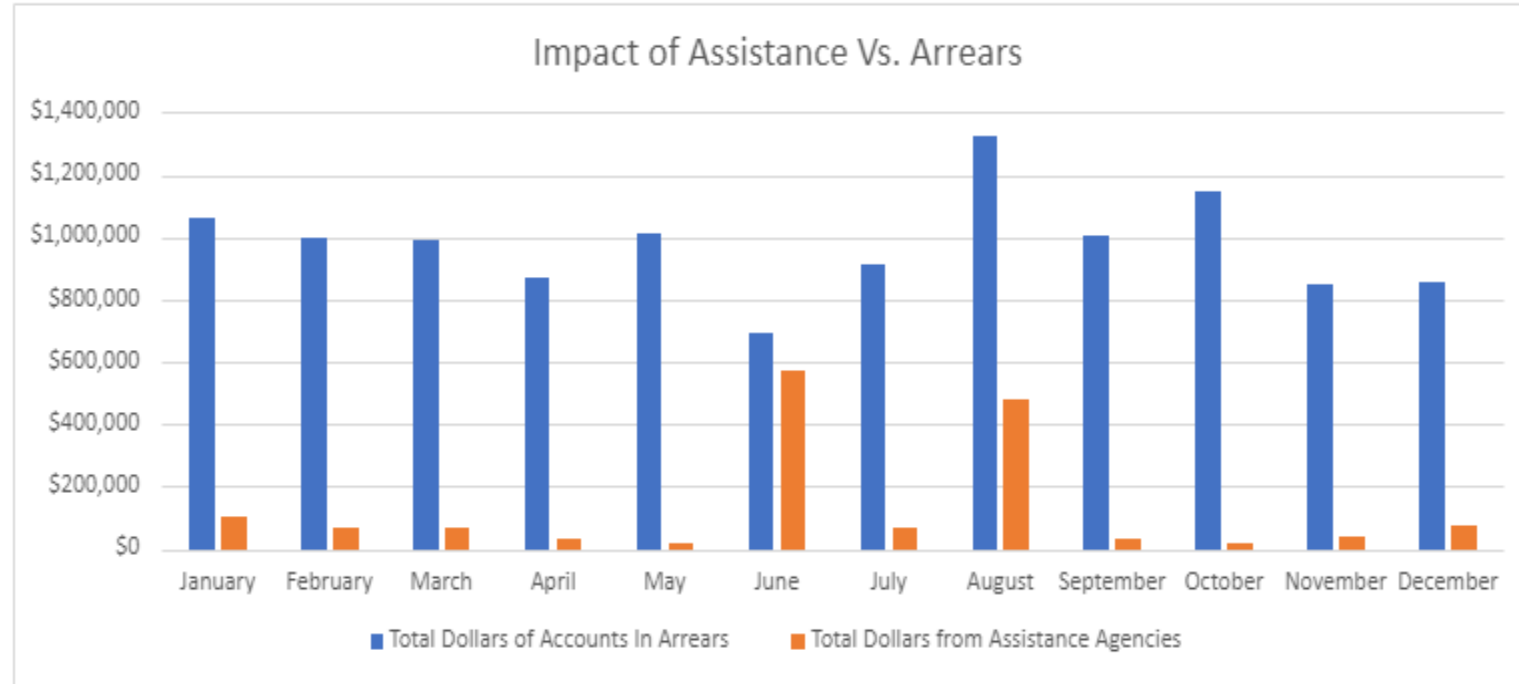
- Covid Relief

County and Community Health Services Agencies

Native American Programs

NPPD Customers have access to more than 50 different assistance programs

Energy Assistance Awareness Campaigns



**APPLY FOR
THE NEBRASKA HOMEOWNER
ASSISTANCE FUND**

Funds are available for pandemic-impacted homeowners

Apply at NebraskaHAF.com

NHAF
HOMEOWNER ASSISTANCE

**Solicite el Fondo de Asistencia
para Propietarios de Vivienda
de Nebraska**

Los fondos están disponibles para los dueños de viviendas afectados por la pandemia.

Se puede aplicar en NebraskaHAF.com

NHAF
HOMEOWNER ASSISTANCE



THE POWER OF PEOPLE



Questions

Stay connected with us.



Nebraska Public Power District

Always there when you need us