



THE POWER OF PEOPLE



Review of Strategic Directive BP-SD-02, Safety

NPPD Board of Directors Meeting
Strategic Business Matters
April 2024

Jenni Shuler, Director of Corporate Safety & Health
Bradley Palu, Corporate Safety Manager



Nebraska Public Power District
Always there when you need us

The Commitment Starts Here

Policy No: SH

- Nebraska Public Power District (NPPD or the District) and its Board of Directors are committed to creating a safe working environment with the intent of preventing or eliminating all job-related accidents, injuries, and illnesses.
- NPPD recognizes that safe operations and efficient operations are mutually supportive.
- NPPD commits to operate its business in a manner that promotes conservative decision-making that reinforces high standards for quality, productivity, and accountability.
- NPPD will strive to conduct all aspects of business in a safe and responsible manner that complies with applicable safety and health regulations.

Management's COMMITMENT to SAFETY

Nebraska Public Power District shall promote the safety and health of our teammates, because that is our NUMBER ONE priority. We are absolutely committed to every one of our teammates being accountable for their safety and the safety of others around them.

Safety shall always come first; there is no condition that requires any of us to work in an unsafe manner.



Thomas J. Kent
President and CEO



Nebraska Public Power District
Always there when you need us

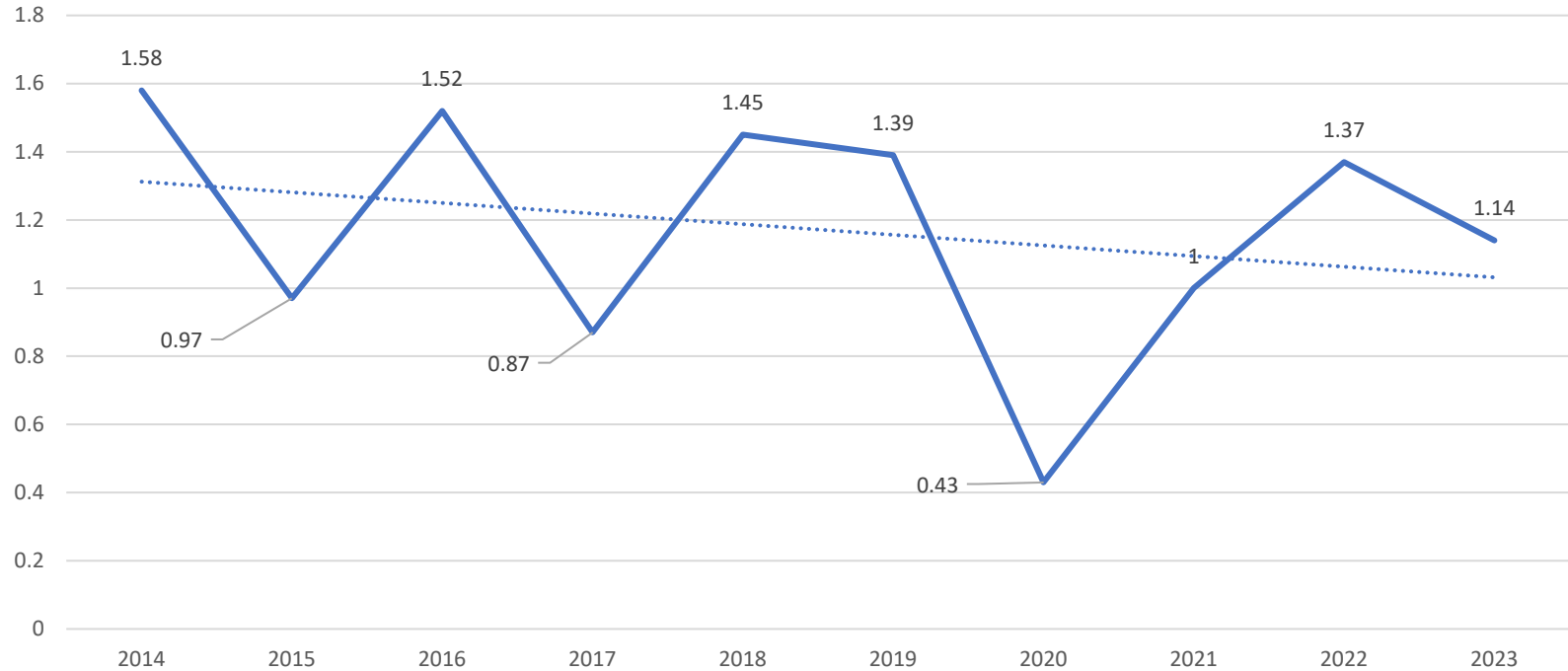
BP-SD-02

BP-SD-02 sets a standard of achieving consistent year-over-year improvement in safety performance measured in the following areas:

- ✓ Days Away Restricted Time (DART) rate
- ✓ Recordable Incident rate
- ✓ Preventable Vehicle Accident rate

The Directive also requires performance be measured by regular safety program and safety culture assessments.

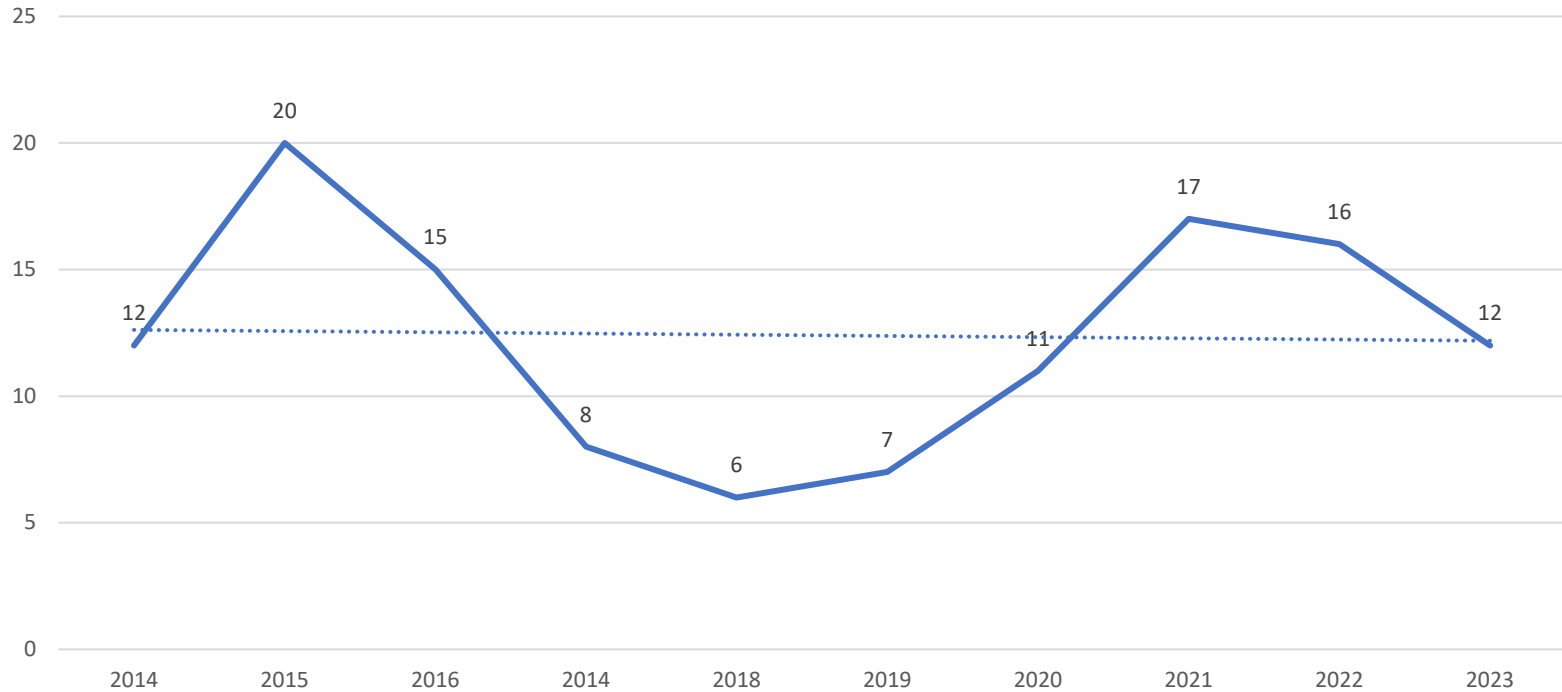
Recordable Incident Rate



***Incident Rate:** Number of injuries/illnesses multiplied by 200,000 divided by total number of hours worked.

Recordable: Any work-related injury or illness requiring medical treatment beyond first aid.

Preventable Vehicle Accidents



***Incident Rate:** Number of injuries/illnesses multiplied by 200,000 divided by total number of hours worked.

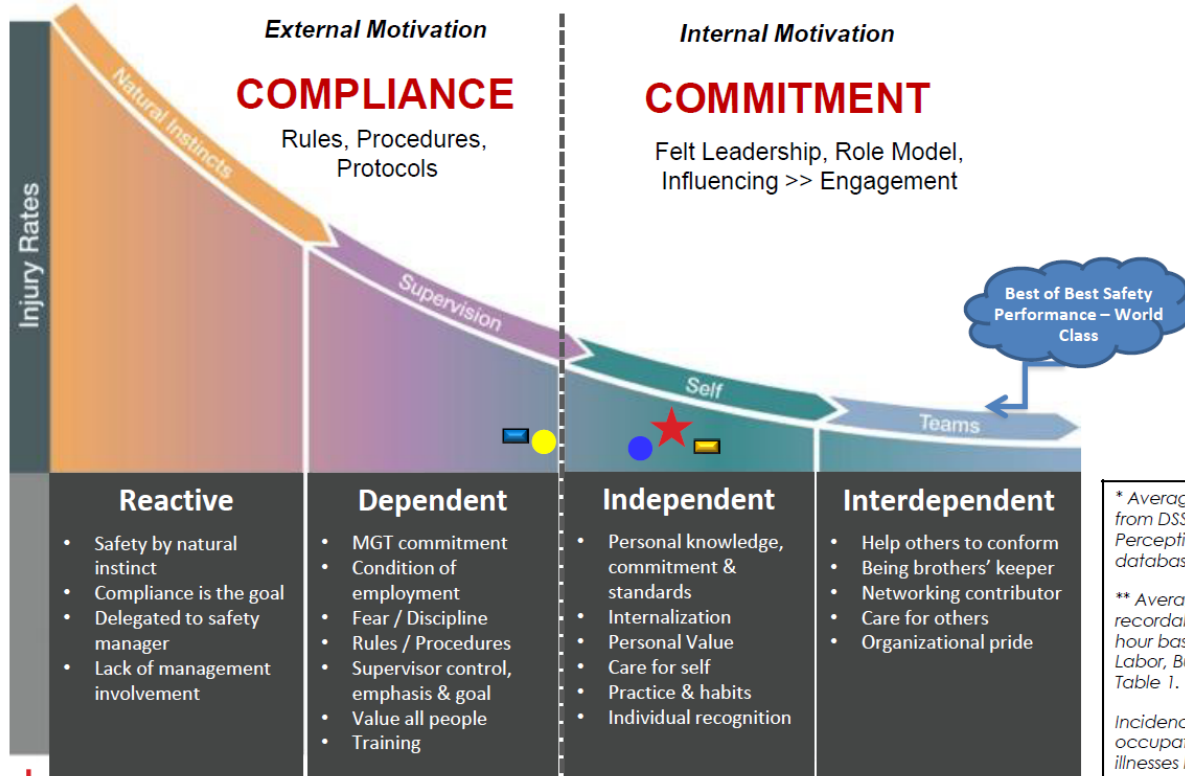
Recordable: Any work-related injury or illness requiring medical treatment beyond first aid.

Measurement of Safety Performance

Safety Culture Evolution and Continuous Advancement



Nebraska Public Power District
Always there when you need us



	Relative Culture Strength*	TRR**
★ NPPD 2023 Overall	66	2.0
● NPPD 2020 Overall	64	1.2
● NPPD 2017 Overall	59	1.3
■ 2211 Electric Power Generation, Transmission and Distribution	68	1.5
■ 2212 Natural Gas Distribution	58	1.8

* Average industry RCS from DSS Safety Perception Survey database

** Average industry OSHA total recordable case rate, 200,000 hour basis; U.S. Department of Labor, Bureau of Labor Statistics, Table 1.

Incidence rates of nonfatal occupational injuries and illnesses by industry and case types, 2021.

2023 Safety Awards

National Safety Council, Nebraska

Nebraska Safest Company Award Winner

**Organization must have a better than industry 3-year average of Incident, Lost Time, and DART rate data.*

Rating of safety programs and policies and the proactive steps taken to demonstrate your commitment to safety.

American Public Power Association

2023 Safety Awards of Excellence

Diamond Status

**Recognize utilities' incident rates and the overall state of their safety programs and culture. Groups are determined by worker-hours of exposure.*





THE POWER OF PEOPLE



Questions?

Stay connected with us.



Nebraska Public Power District

Always there when you need us