

EPRI Overview & Engagement

Nebraska Public Power District

Rob Chapman

SVP Energy Delivery & Customer Solutions

Board Meeting

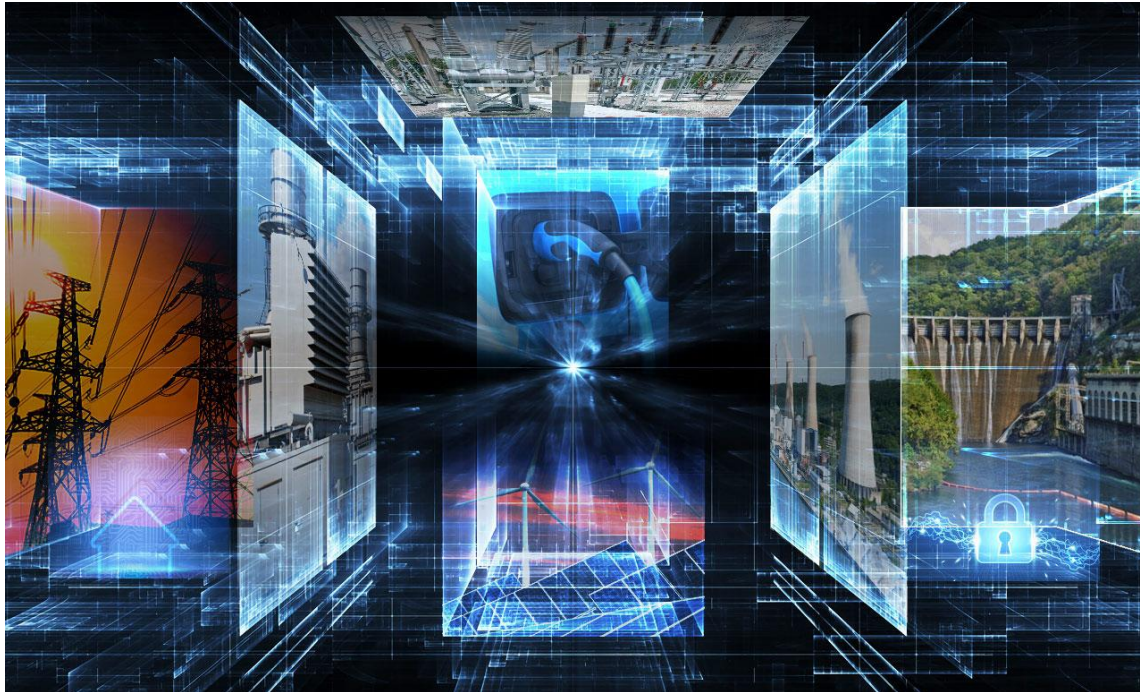
October 12, 2023 – Columbus, NE



Who is EPRI?

Who We Are

Founded in 1972, the Electric Power Research Institute (EPRI) is the world's preeminent independent, non-profit energy research and development organization, with offices around the world.

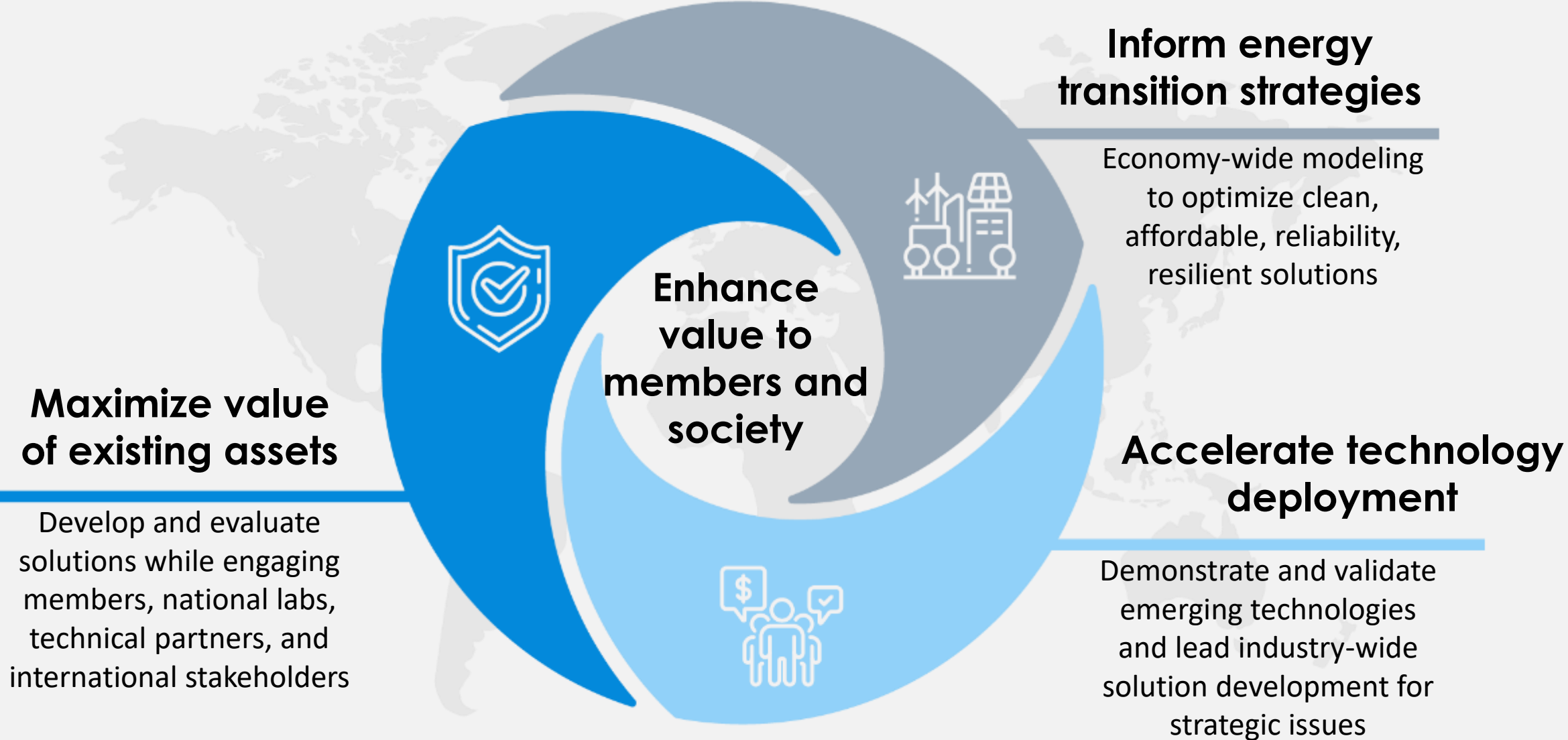


Our Members

EPRI's trusted experts collaborate with more than 450 companies in 45 countries, driving innovation to ensure the public has clean, safe, reliable, affordable, and equitable access to electricity across the globe.



EPRI's Role... Independent, Science Based Research



Why EPRI...Power of Collaboration

COLLABORATION

SHARED RISK & BENEFITS

TECHNICAL EXPERTISE

EXTENSION OF YOUR STAFF

CREDIBILITY

INDEPENDENT, SCIENCE BASED RESEARCH



How...EPRI's Governance and Advisory Structure



ADVISORY COUNCIL



BOARD OF DIRECTORS
Tom Kent

~1500 MEMBER & INDUSTRY ADVISORS`

Executive Peer Innovation Committee- OHS
Bradley Palu



RESEARCH ADVISORY COMMITTEE
Mick Spencer

Technology Management Committee
Dave Oshlo



Generation Sector Council
Art Wiese



Nuclear Sector Council
Khalil Dia



Energy Delivery & Customer Solutions Sector Council

Transmission & Distribution Infrastructure
Scott Walz

Integrated Grid & Energy Systems
Scott Walz

Information Communications and Cyber Security
Robyn Tweedy

Electrification & Sustainable Energy Strategy (ESES)
Chad Pinkelman

Program Committees

Program Committees

Program Committees

Program Committees

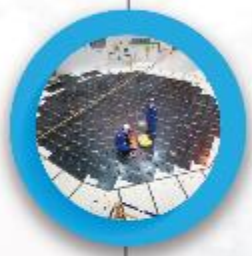
Program Committees

Program Committees

EPRI's Focus...Touching the Entire Electricity Value Chain

TECHNOLOGY INNOVATION

Driving thought leadership, advanced R&D, and technology scouting and incubation to sustain a full pipeline of solutions



Nuclear Power



Energy Supply and Low-Carbon Resources



Electrification and Sustainable Energy Strategy



Transmission and Distribution Infrastructure



Integrated Grid and Energy Services

STRATEGIC RESEARCH



Low-Carbon Resources



End-Use/
Economy-Wide Carbon Reduction



Electric System Reliability/Resilience



Electric System Flexibility



Market Transformation/
Policy/Regulatory Education

EPRI Impact...Increasing Revenue, Reducing Costs, Managing Risk to Enable Responsible, Reliable, and Affordable Energy for your Communities

THOUGHT LEADERSHIP



ASSET MANAGEMENT & OPERATIONAL EFFICIENCY



ACCELERATE SOLUTIONS



NPPD INVESTMENT OF \$2.1M PROVIDES FOR COLLABORATIVE RESEARCH OF \$270M

EPRI Impact...Utility Risk Management...Informing Federal and State Regulatory and Policy Constructs

EPRI Comments on EPA's Proposed Power Plant Rules

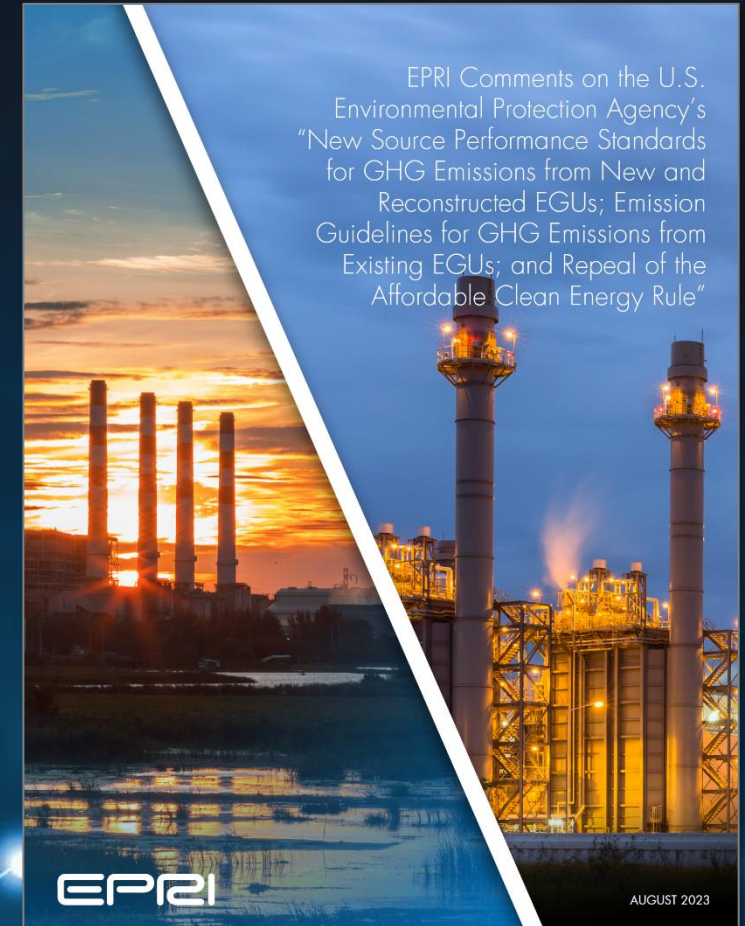
Available Now Public comments available on regulations.gov and epri.com:
<https://www.epri.com/research/products/000000003002027793>

Cross-sector comments on:

- *Carbon Capture and Sequestration:* A phased approach to CCS deployment provides opportunities to address key uncertainties around cost, performance, and operation, and achieve nth-of-a-kind cost.
- *Hydrogen:* A large-scale infrastructure buildout is necessary to support power generation.
- *Modeling:* The rules' assumptions do not reflect the impacts on the power sector, environment, customers, and communities.
- *Broader Impacts:* There are wide-ranging energy system and societal effects that need to be understood to inform the proposed rules.

Informed by more than 50 years of research and development from EPRI's industry-leading experts

Contact John Bistline (jbistline@epri.com) for additional information



A blue-tinted photograph of four people standing in a row. From left to right: a man with curly hair and glasses wearing a white lab coat; a man with glasses wearing a white lab coat; a woman wearing a white hard hat and a dark polo shirt; and a man with glasses and a beard wearing a light-colored button-down shirt. The text 'Together...Shaping the Future of Energy®' is overlaid in white in the center.

Together...Shaping the Future of Energy®

Questions?

