



# THE POWER OF PEOPLE



## Kearney and Scottsbluff 115 kV Transmission Line Projects - Final Line Route

NPPD Board of Directors Meeting  
Strategic Session  
May 2023

Art Wiese, VP Energy Delivery



# Public Involvement Summary

- Routes for the transmission line projects were developed through a three phase process:
  - Route segments (September 2022)
  - Preferred and alternative line routes (November 2022)
  - Proposed route (March 2023)

	Kearney 115kV Project		Scottsbluff 115kV Project	
Event	Invitations Sent	Attendance	Invitations Sent	Attendance
Phase 1 Open House	1,271	108 in person 122 virtual	1,132	57 in person 111 virtual
Phase 2 Open House	182	43 in person 38 virtual	230	63 in person 25 virtual
Phase 3 Open House & Public Hearing	66	28 in person 99 virtual	131	65 in person 48 virtual

# Routing and Siting Criteria

At each step of the process, the Project Team considered three categories of routing criteria:



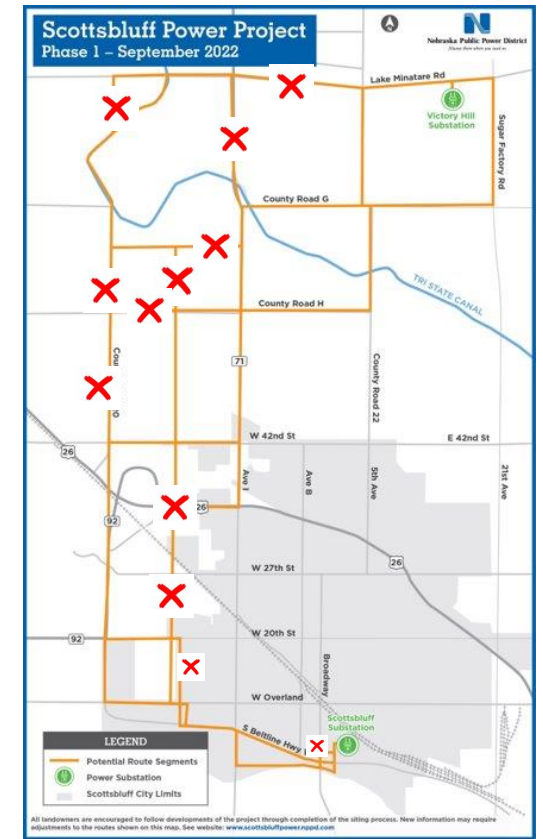
# **Scottsbluff 115 kV Transmission Line Project**

# Phase 1 Potential Route Segments



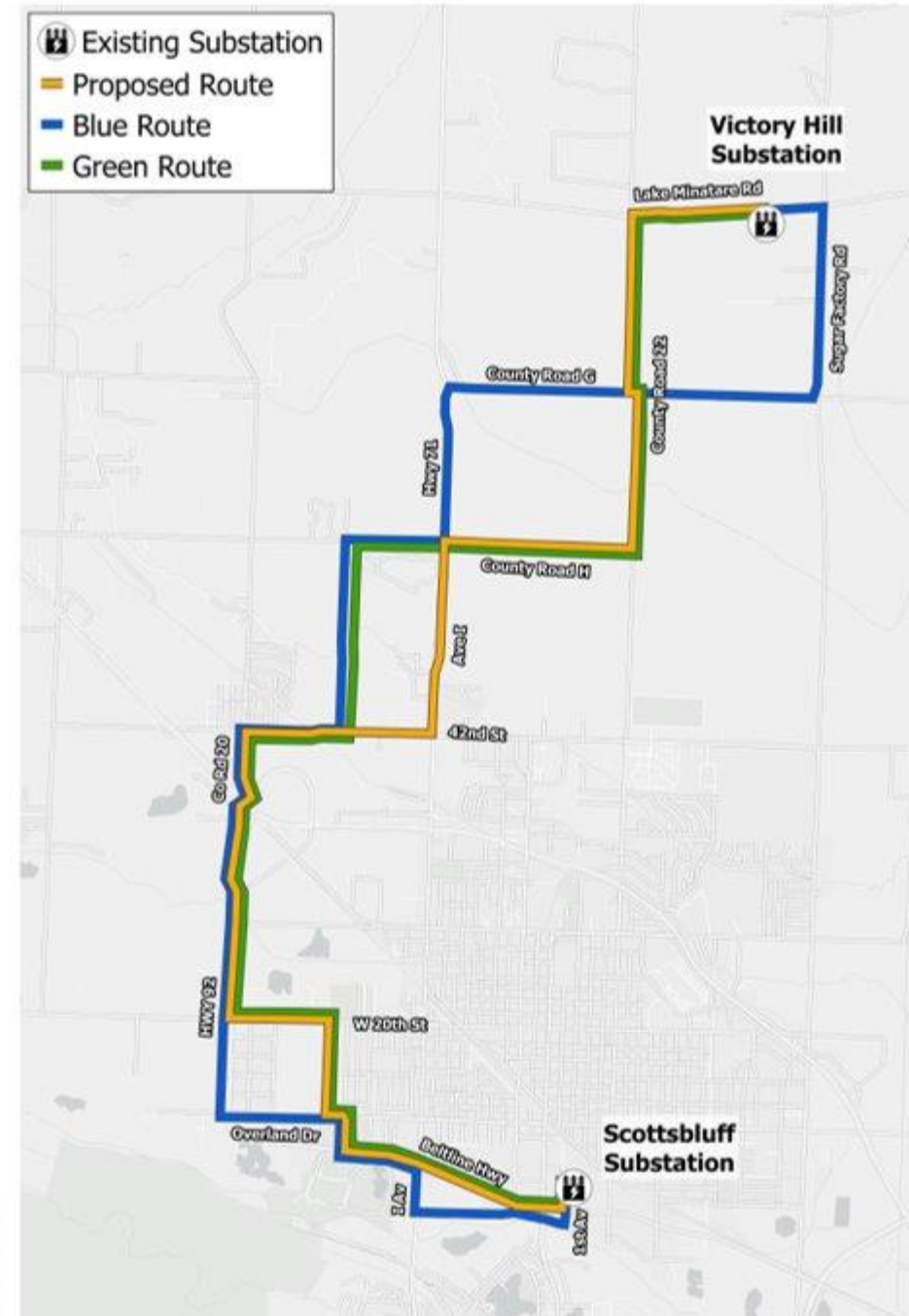


# Phase 2 Preferred and Alternative Line Routes

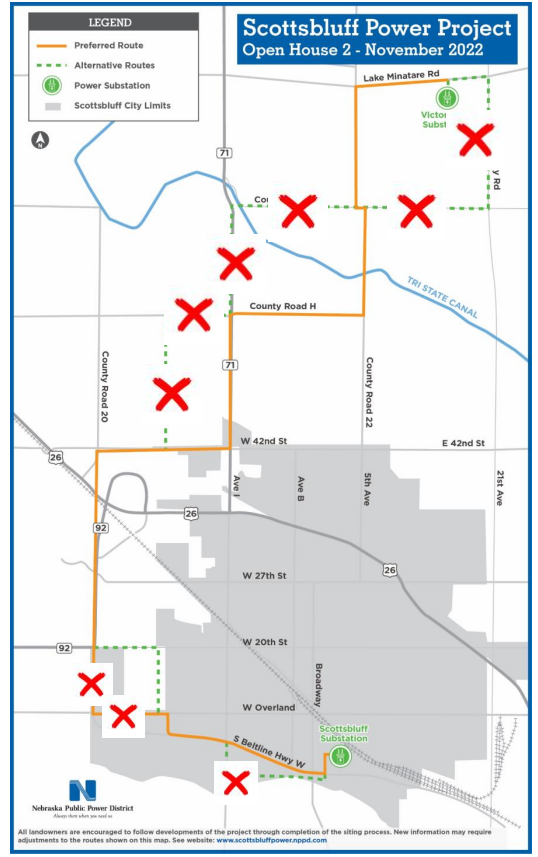


# Phase 3 Routing Decision Map

Routing Criteria (within 100 feet unless otherwise noted)	Blue	Green	Orange (Proposed Route)
Homes (100ft)	39	38	26
Homes (30 ft)	0	0	0
Active Wells	10	10	9
Structures	25	23	18
Center Pivot Irrigation	13	9	9
Churches/Schools	1	1	1
Environmental Constraints	4	4	4
Existing Transmission	9	7	7
Highway Crossings	4	3	3
Historical Site	1	0	0



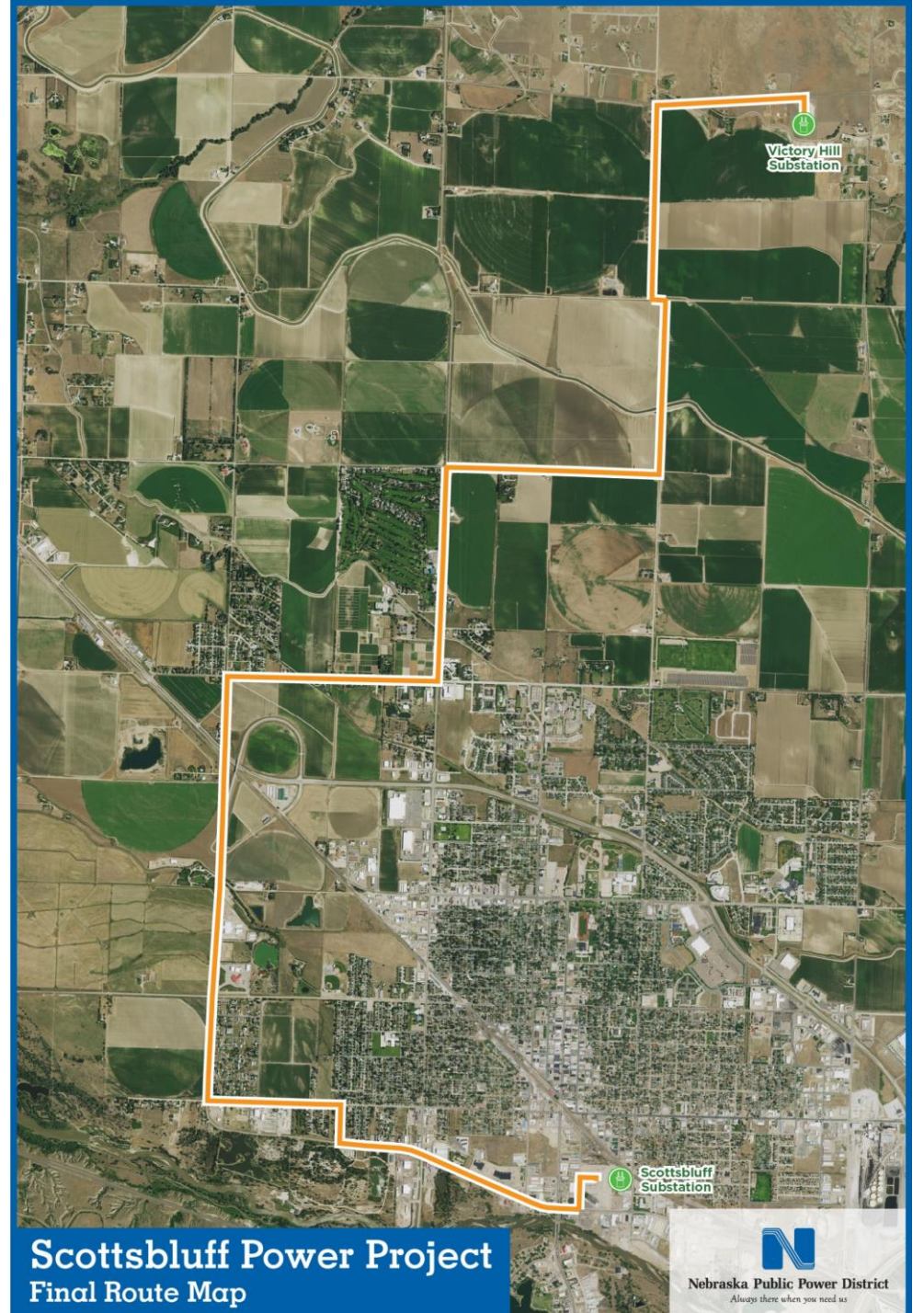
# Phase 3 - Proposed Route





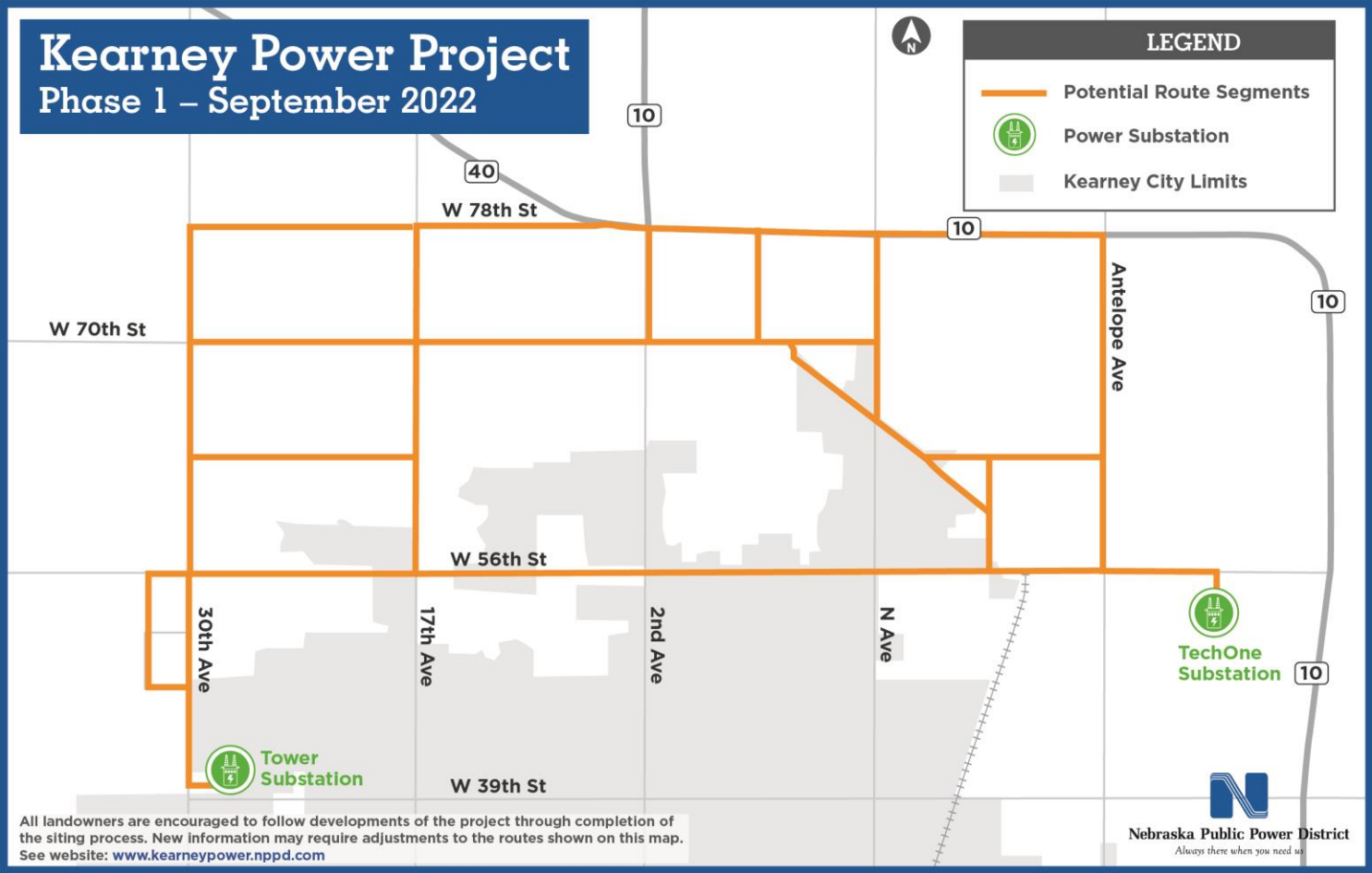
# Final Line Route

The proposed route is considered to be the final line route as it had the least amount of impacts

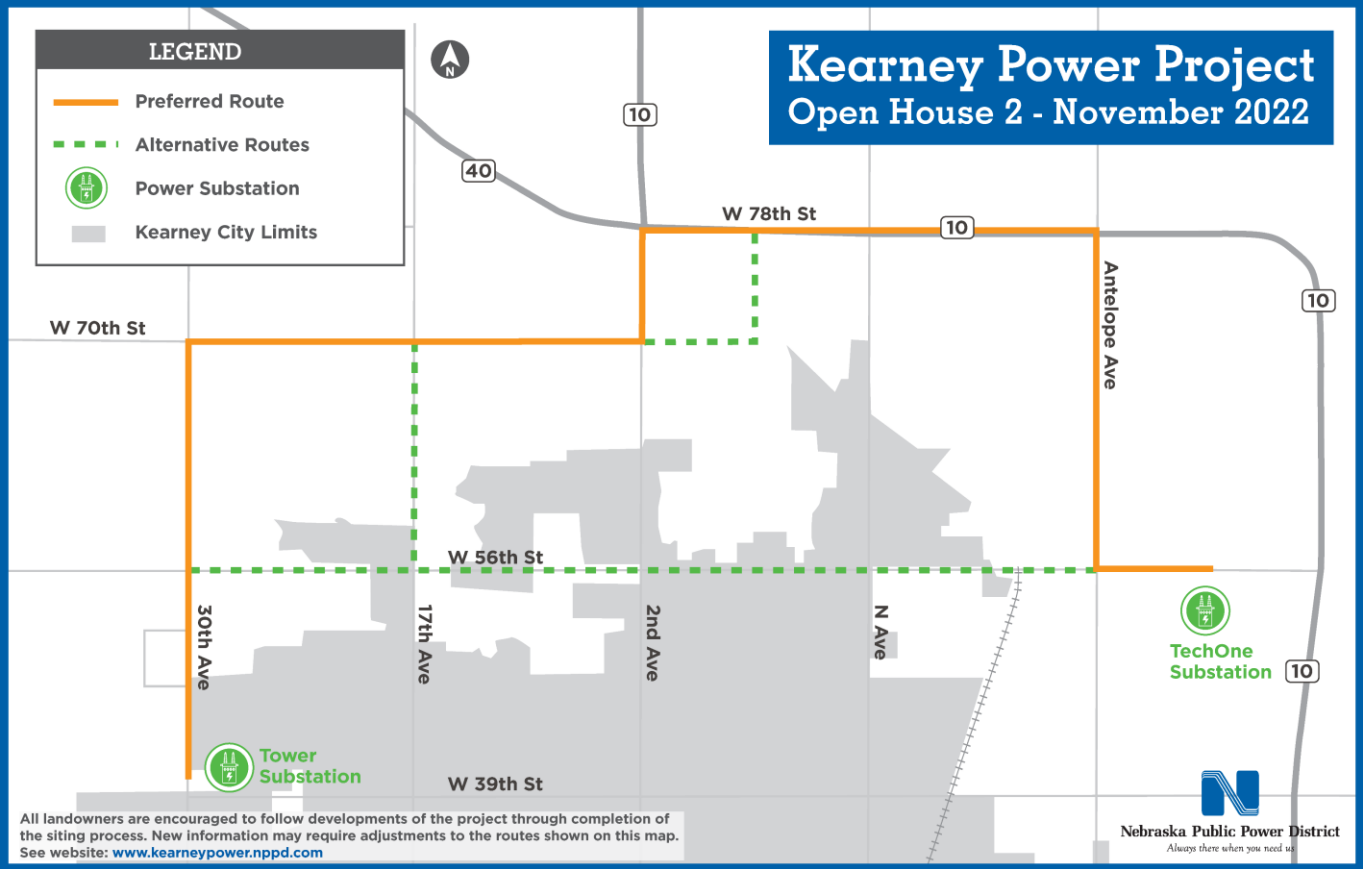
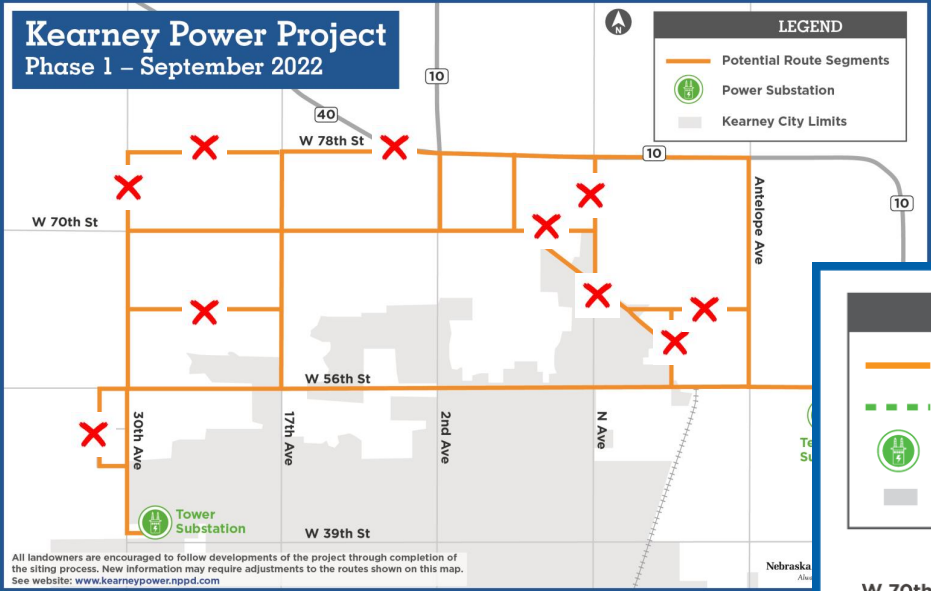


# **Kearney 115 kV Transmission Line Project**

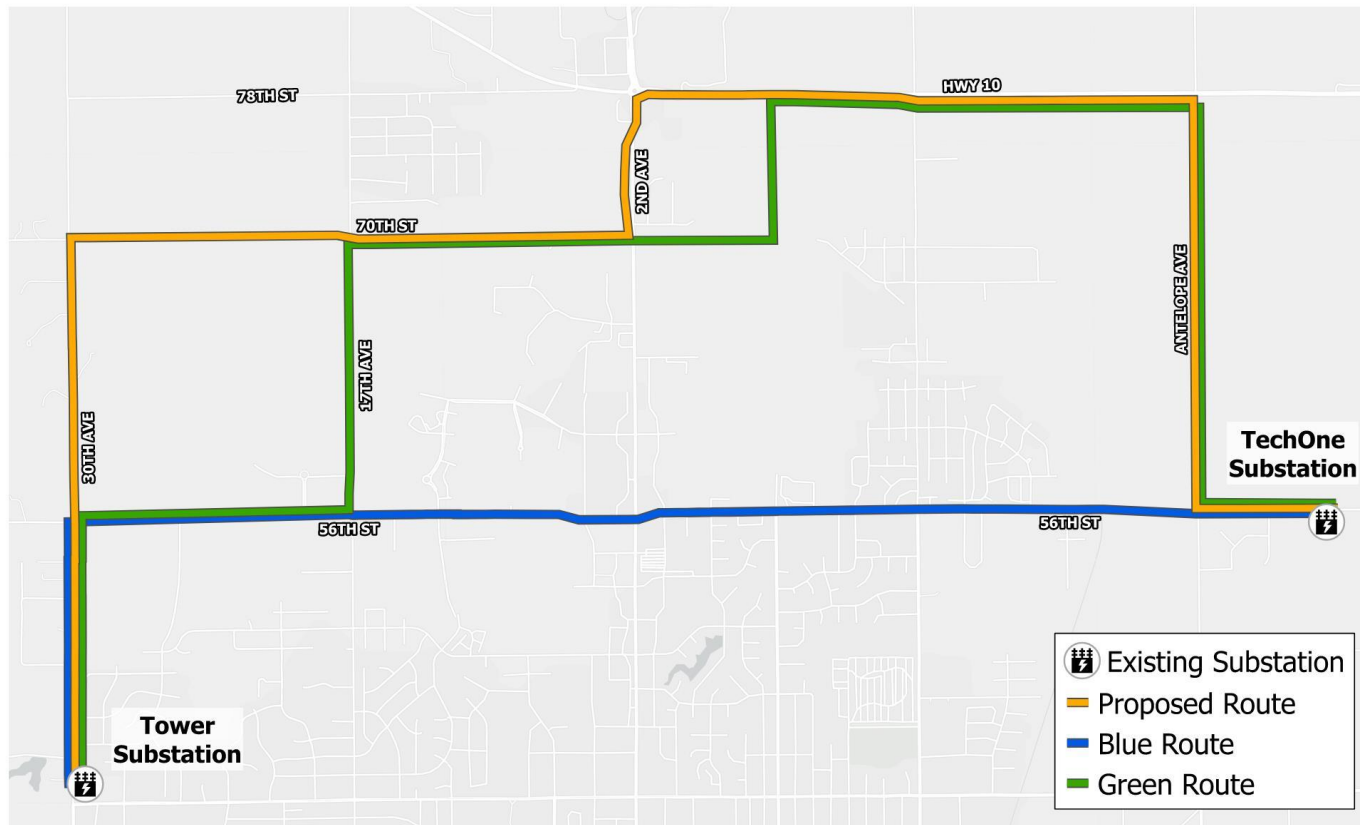
# Phase 1 - Potential Route Segments



# Phase 2 - Preferred and Alternative Line Routes



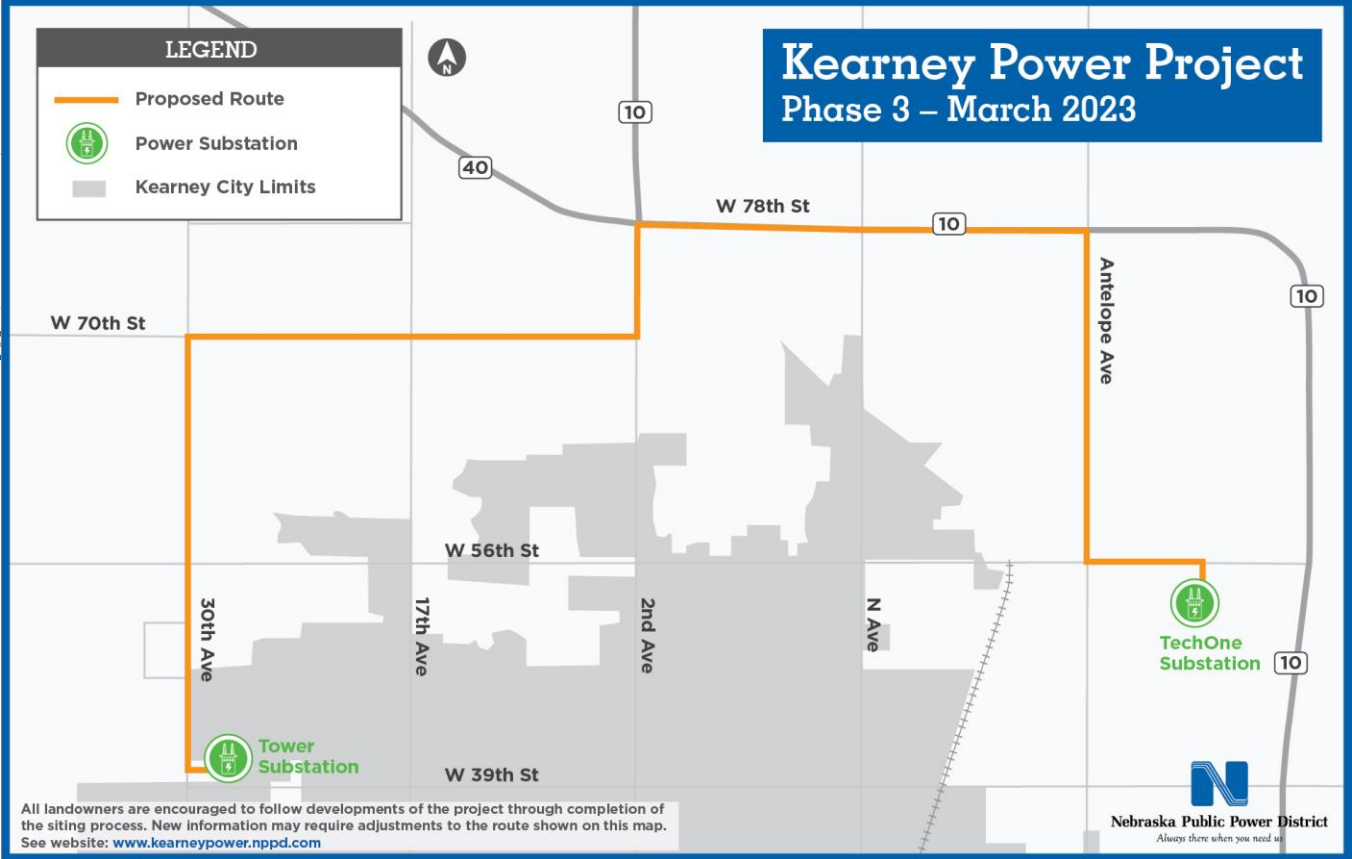
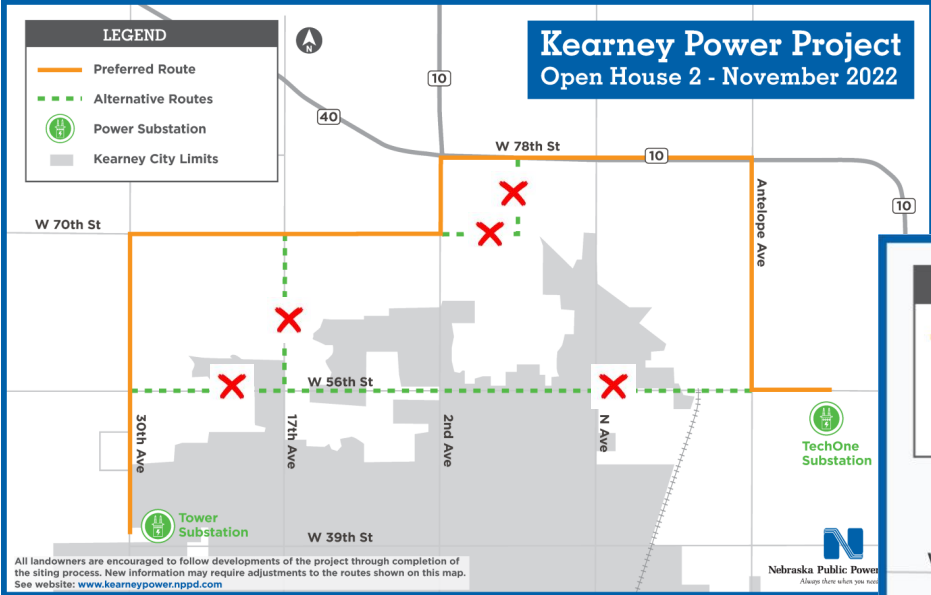
# Phase 3 Routing Decision Map



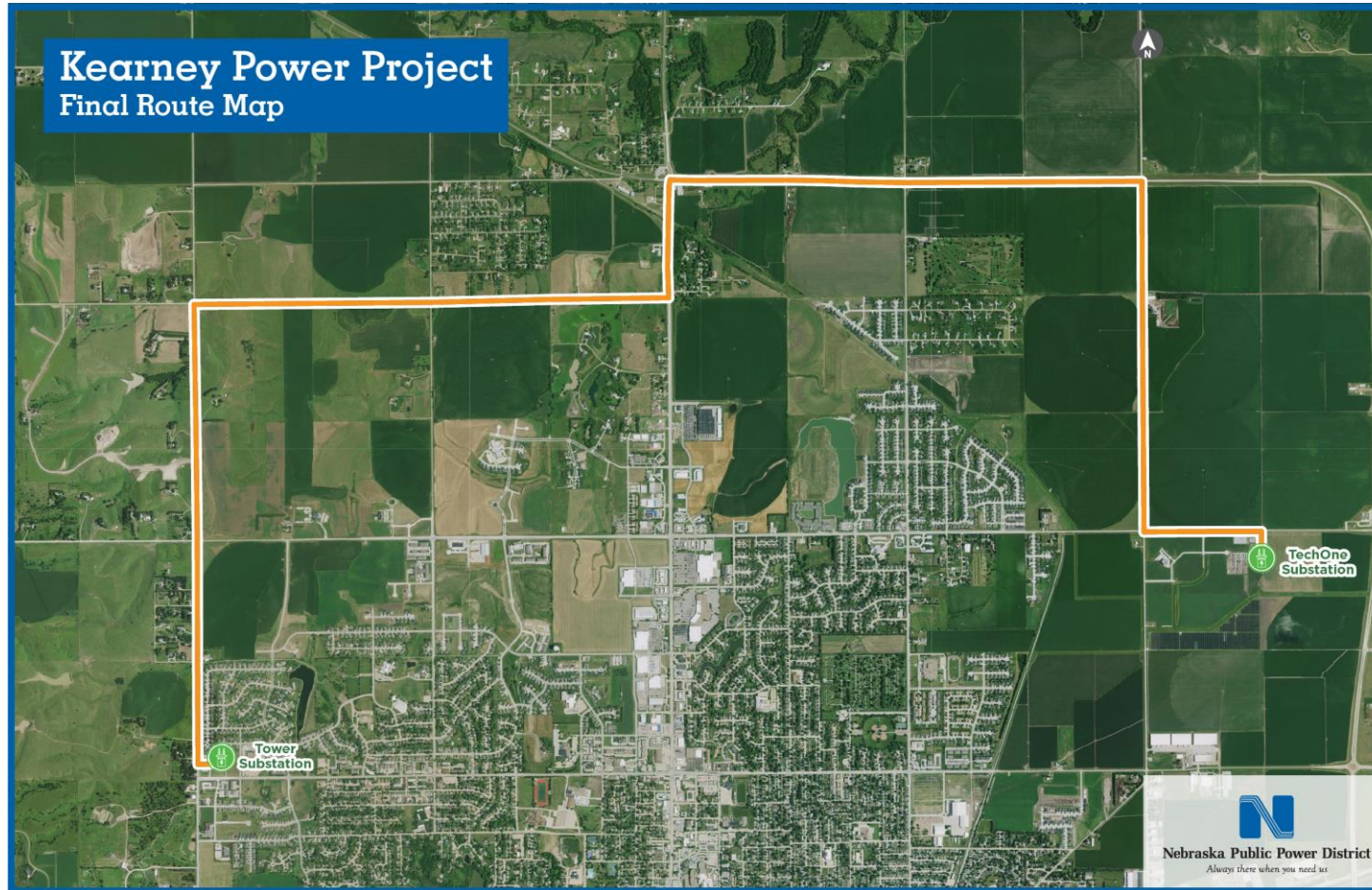
Routing Criteria (within 100 feet unless otherwise noted)	Blue	Green	Orange (Proposed Route)
Homes (100 ft)	55	21	17
Homes (30 ft)	8	0	0
Active Wells	5	5	3
Structures	8	7	5
Center Pivot Irrigation	2	13	9
Churches/Schools	0	0	0
Environmental Constraints	1	2	2
Existing Transmission	1	1	1
Highway Crossings	0	0	0



# Phase 3 - Proposed Route



# Final Line Route



The proposed route is considered to be the final line route as it had the least amount of impacts



# THE POWER OF PEOPLE



## Questions

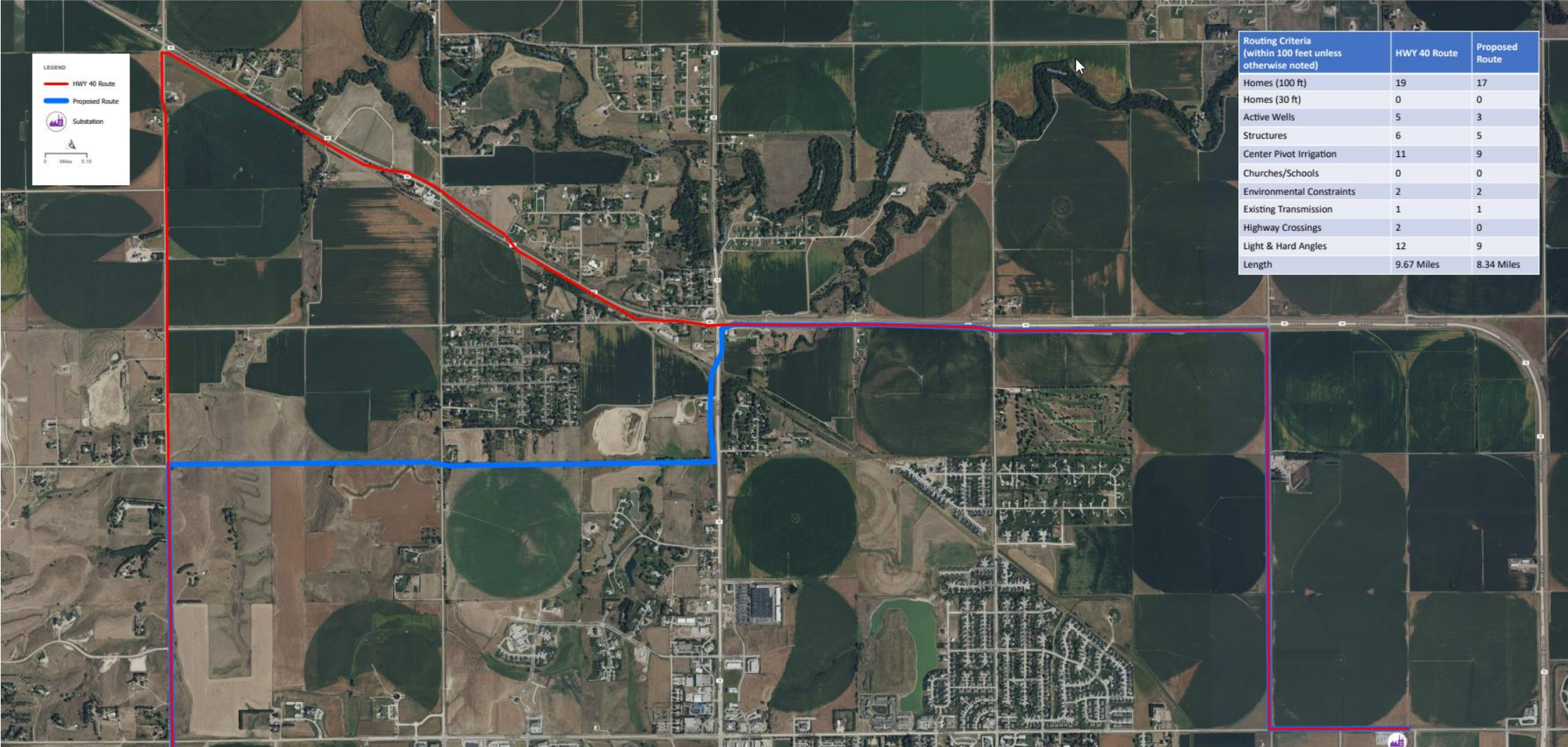
Stay connected with us.



**Nebraska Public Power District**  
*Always there when you need us*



# Phase 3 - Suggested Route





# Phase 2 - Suggested Route

