



REPORT

2022 Annual CCR Fugitive Dust Control Report
Gerald Gentleman Station

Submitted to:

Nebraska Public Power District

Gerald Gentleman Station
6089 South Highway 25, Sutherland, Nebraska 69165

Submitted by:

Golder Associates Inc.

7245 W Alaska Drive, Suite 200, Lakewood, Colorado, USA 80226

+1 303 980-0540

20149028-6-R-0

December 9, 2022

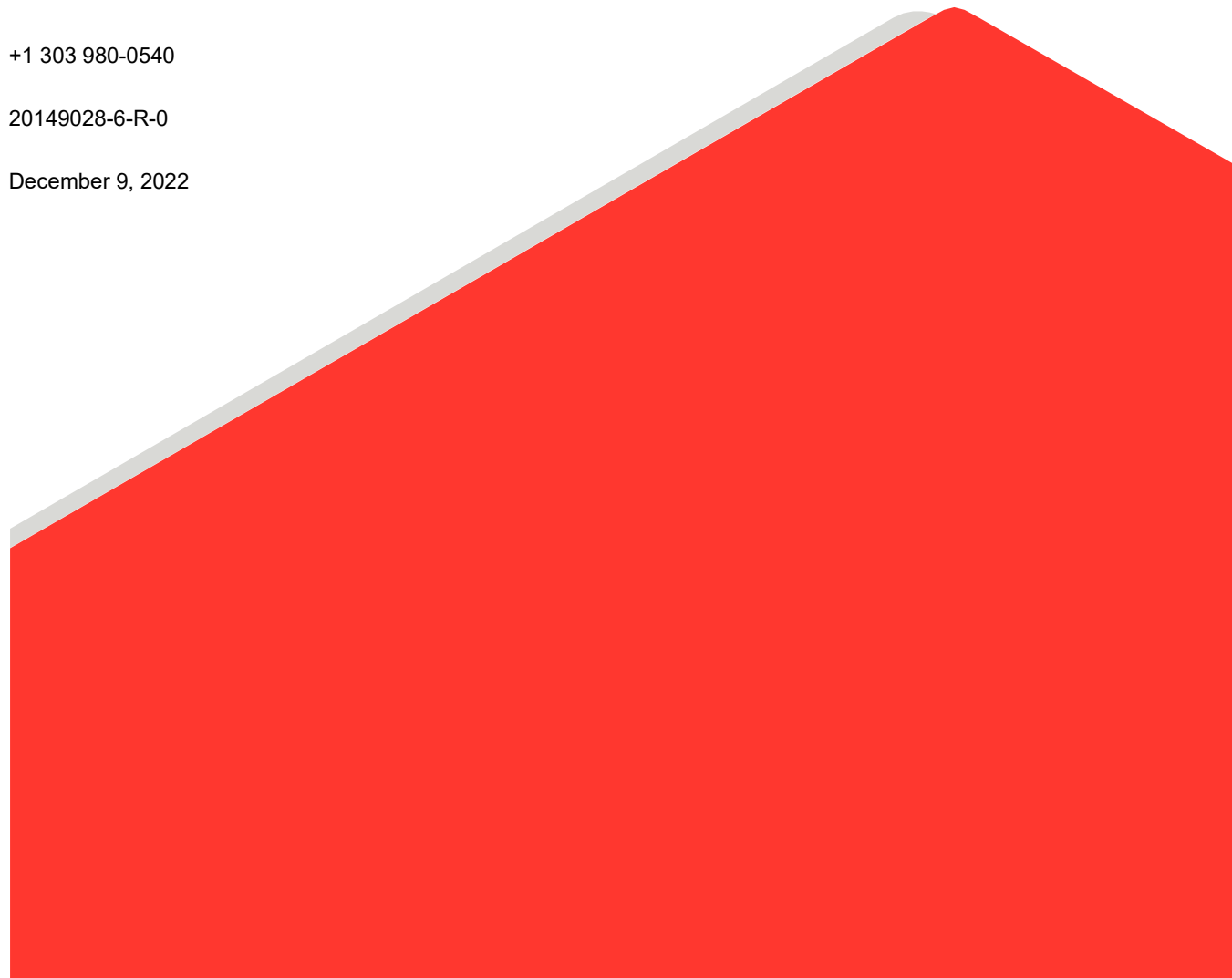


Table of Contents

1.0 INTRODUCTION 1

 1.1 Facility Description 1

 1.2 Regulatory Requirements 1

2.0 ACTIONS TAKEN TO CONTROL FUGITIVE DUST 1

 2.1 Collection and Loading..... 2

 2.1.1 Fly Ash Not Sold for Off-Site Beneficial Reuse..... 3

 2.1.2 Fly Ash for Off-Site Beneficial Reuse..... 3

 2.2 Transport..... 3

 2.3 Placement 4

3.0 RECORD OF CITIZEN COMPLAINTS 4

4.0 SUMMARY OF CORRECTIVE MEASURES TAKEN 4

5.0 RECORD KEEPING AND NOTIFICATIONS..... 4

FIGURES

Figure 1 Facilities Included in Dust Control Plan and Haul Routes

1.0 INTRODUCTION

Golder Associates USA Inc. (Golder), a Member of WSP, prepared this Annual Coal Combustion Residuals (CCR) Fugitive Dust Control Report on behalf of Nebraska Public Power District (NPPD) for Gerald Gentleman Station (GGS). This report has been developed in accordance with recognized and generally accepted best management practices and as required under 40 Code of Federal Regulations (CFR) 257.80(c). Provided in this report is a description of the actions taken to control CCR fugitive dust. Citizen complaints and corrective measures regarding fugitive dust are addressed in Section 3.0 and 4.0, respectively; however, there have not been any citizen complaints at GGS for the 2022 reporting period (October 15, 2021, to October 15, 2022).

1.1 Facility Description

GGS is a 1,365-megawatt coal-fired electric facility located south of Sutherland, Nebraska. The plant and associated facilities pertaining to the handling of CCRs are shown in Figure 1.

CCRs generated at GGS include fly ash, economizer ash, and bottom ash. These CCRs are managed in a dry landfill that is owned and operated by NPPD and regulated by the Nebraska Department of Environment and Energy (NDEE). The dust control measures for management and handling, transport, and placement of CCRs are described in this report.

1.2 Regulatory Requirements

At GGS, CCR fugitive dust is regulated by the NDEE in accordance with the Air Pollution Control Title V Permit to Operate and Title 129 of the Nebraska Air Quality Regulations. Fugitive dust generated by CCR-related activities at GGS is also managed in accordance with the CCR Rule, 40 CFR 257. This report is limited to addressing the annual requirements for the CCR Rule. Specific requirements of the Title V Operating Permit are not duplicated in this report. This report will be maintained within the operating record and posted to GGS's publicly accessible website for at least five years.

2.0 ACTIONS TAKEN TO CONTROL FUGITIVE DUST

Fugitive dust may be generated at GGS by loading, transport, and placement operations. The specific locations of potential CCR fugitive dust sources are as follows:

- Collection and Loading
 - Baghouse to fly ash silos
 - Boiler economizer hoppers to fly ash silos
 - Fly ash silos to trucks
 - Fly ash from truck to rail car
- Transport
 - Haul trucks
 - Rail cars
 - Vacuum trucks
 - Haul roads

- Placement
 - Ash Landfills #3 and #4 (Landfill)
 - Bottom ash landfill (closed in 2018)

Actions taken at GGS to control fugitive dust have not changed from the collection, handling, loading, transport, placement, and control measures presented in the initial Dust Control Plan dated October 15, 2015. The Dust Control Plan will be amended as needed, maintained in the operating record, certified by a professional engineer registered in Nebraska and posted on the publicly accessible website.

NPPD staff performed the following tasks to evaluate the effectiveness of the current CCR fugitive dust measures and ensure that the procedures described in the Dust Control Plan adequately controlled CCR fugitive dust:

- Weather conditions were monitored daily for wind and precipitation events. If high winds were expected, additional measures were taken to minimize CCRs from becoming airborne. A water truck was operated as needed based on expected precipitation or freezing events.
- Routine observations were conducted to determine whether dust was becoming airborne in such quantities and concentrations that it remained visible in the ambient air beyond the premises where it originated.
- Conditioned CCR was assessed periodically to ensure that it was placed in a manner that limits the formation of fugitive dust.
- The fabric dust collectors were monitored continuously per the Title V Permit to determine whether fabric dust collectors were functioning properly.

The observations and routine functions listed above are standard practice at GGS. Visual emissions were observed daily during operations to assure that fugitive dust at the site was controlled. Personnel involved in CCR handling and placement are instructed to ensure compliance with permits, facility plans and appropriate regulations. Additional fugitive dust control activities completed by NPPD are described in the following sections.

2.1 Collection and Loading

Fly ash was collected in flue gas baghouses and economizer ash was collected in boiler economizer section hoppers, then both materials were pneumatically conveyed to the fly ash storage silos. The fly ash storage silos were unloaded through the fly ash silo truck system. At the baghouses, dust was controlled within a full enclosure using fabric dust collector filter bags.

Bottom ash was collected in hoppers beneath the boiler. A drag chain conveyor dewateres the bottom ash as it is transported to the truck loading area. Trucks are loaded directly from the drag chain conveyor. Trucks then take bottom ash to a storage area on the east side of Ash Landfill No. 4 where it is stockpiled and marketed for beneficial reuse.

2.1.1 Fly Ash Not Sold for Off-Site Beneficial Reuse

At the fly ash silos, fly ash was moisture conditioned in rotary pan mixers and loaded into haul trucks. Fugitive dust was controlled by the following:

- Conditioning the fly ash with water to an appropriate moisture content prior to loading into haul trucks. The moisture content helped prevent wind dispersal but did not result in free liquids.
- Loading into haul trucks that are covered or enclosed at the fly ash silos.
- Minimizing the fall distance at the drop point with an enclosed chute.
- Reducing or halting operations during high winds.

2.1.2 Fly Ash for Off-Site Beneficial Reuse

A portion of the fly ash that was marketed and used for off-site beneficial reuse was first screened at the fly ash silos prior to being loaded into the haul trucks. The fly ash screen tailings were conveyed to a temporary storage container using an enclosed chute. Screened fly ash tailings that were collected in the temporary storage container were placed in the landfill when the container became full. At the rail car loading area, screened fly ash was conveyed from the haul trucks to rail cars via auger. To control dust, a drop chute and drop tube were used to connect the auger to the truck and rail car, respectively, and the rail cars were fully enclosed.

The remaining portion of the fly ash that was marketed and used for off-site beneficial reuse was loaded into fully enclosed trucks. This fly ash was not screened prior to loading.

Fugitive dust was controlled by the following:

- Loading into haul trucks or market trucks that were covered or enclosed at the fly ash silos.
- Minimizing the fall distance at the drop point with an enclosed chute.
- Reducing or halting operations during high winds.

2.2 Transport

Fly ash was transported in covered or enclosed haul trucks while bottom ash, which is not easily entrained in the air, was transported in open trucks or containers as conditions warranted. CCR material may also have been transported in vacuum trucks and other covered containers. The haul routes are shown in Figure 1. GGS has both paved and unpaved haul roads. Fugitive dust was controlled on the haul roads by covering loads, applying water to the roads with a water truck, and operating the water truck when hauling of CCRs occurred, with an exception for freezing conditions. During freezing conditions, alternatives may have been used to control dust as warranted. Alternatives for minimizing CCRs from becoming airborne on roadways include the following:

- Paving and sweeping roads.
- Applying chemical dust suppressants or binders.
- Applying sand or gravel.
- Reducing speed limits on haul roads.
- Reducing or halting operations during high winds.

2.3 Placement

Placement of CCRs occurred at the GGS ash disposal facility. Fugitive dust at the ash disposal facility was controlled by:

- Placing fly ash conditioned with water or an appropriate chemical dust suppression agent to achieve minimization of dust without the creation of free liquids.
- Compacting the fly ash after placement. Compaction was achieved by making a pass over spread materials with a haul truck. The fly ash formed a crust that helps to prevent re-entrainment of fly ash from the wind.
- Operating a water truck and/or watering pivot over recently placed fly ash, except during freezing conditions.
- Using a water truck to apply water over recently placed bottom ash, as necessary.
- Reducing or halting operations during high winds.
- Placing fly ash that was not moisture conditioned only if conditions were favorable and the method of transport required it, such as unloading vacuum trucks.
- Applying water or making other similar provisions to control fugitive dust during placement of dry fly ash.

3.0 RECORD OF CITIZEN COMPLAINTS

NPPD did not receive citizen complaints between October 15, 2021, and October 15, 2022. As stated in the Dust Control Plan, complaints that are received will be forwarded to the NPPD Corporate Environmental Department for review and coordination of response and corrective measures. The response and corrective measures to each complaint will be determined on a case-by-case basis. A copy of each complaint and its resolution, including a summary of corrective action taken, will be included in the operating record and the annual dust control report.

4.0 SUMMARY OF CORRECTIVE MEASURES TAKEN

CCR fugitive dust was sufficiently managed using the procedures described in the Dust Control Plan. Corrective measures were not needed during the period from October 15, 2021, to October 15, 2022.

5.0 RECORD KEEPING AND NOTIFICATIONS

The NDEE will be notified before the close of business on the day this annual report is placed in the operating record. Within 30 days of placing the annual report in the operating record, NPPD will post the report to a publicly accessible website. Each annual report will be retained and posted to the website for at least five years.

Signature Page

Golder Associates Inc.



Jacob Sauer, PE
Lead Senior Consultant



Addison Darr
Associate Consultant, Civil Engineer

JS/AD/rm

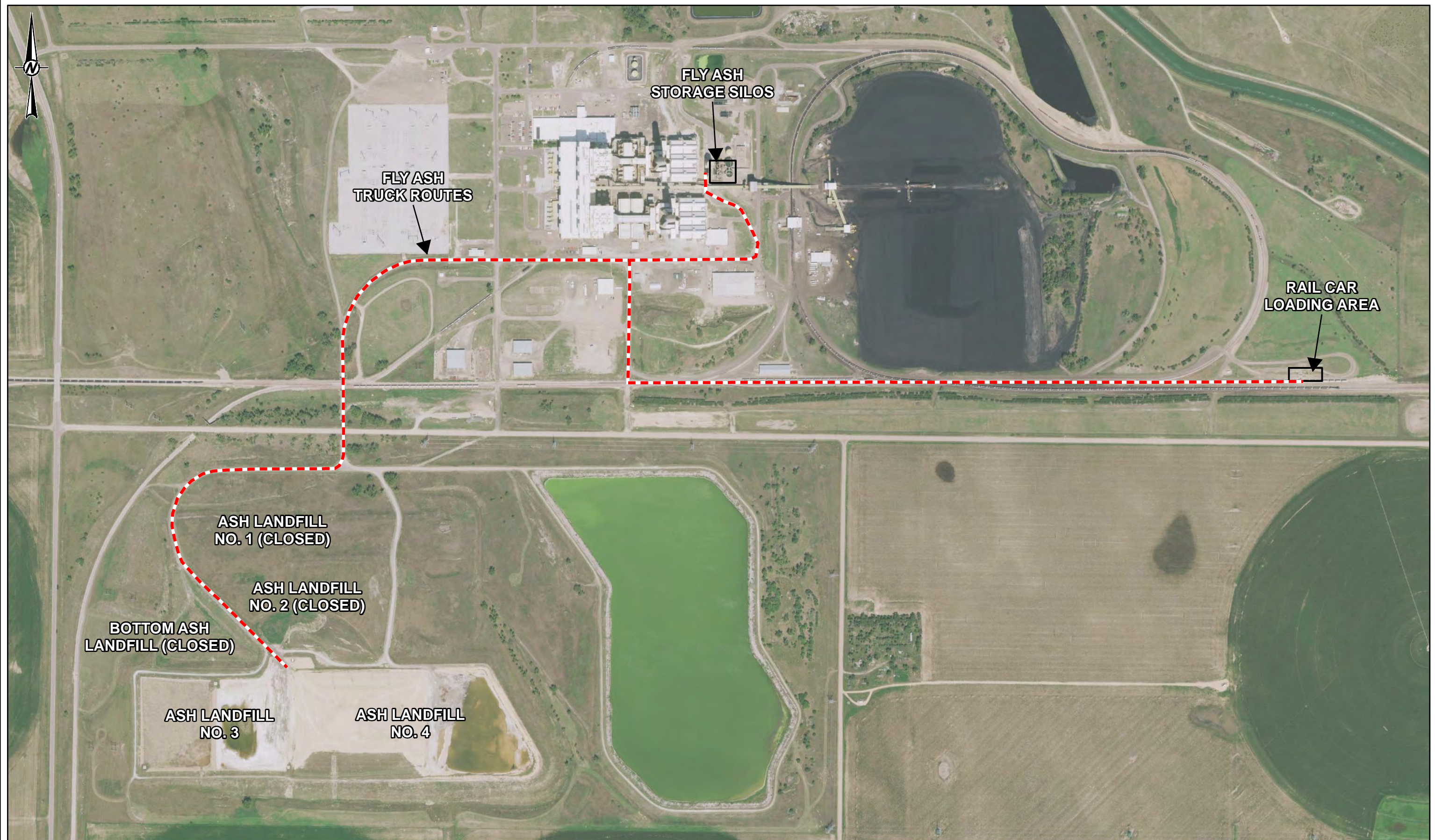
Golder and the G logo are trademarks of Golder Associates Corporation

c:\users\ramorin\golder associates\20149028, nppd ggs 2020 2021 ccr support - 6 deliverables\reports\6-r-nppd_ggs_2022_fugitive_dust_report\6-r-0\20149028-6-r-0-ggs_2022_fugitive_dust_report_02dec22.docx

Figures



PATH: M:\NPPD_GeraldGentlemanStation\Maping\Maping\AnnualFugitiveDustReport_Fig01.mxd PRINTED ON: 2023-11-22 AT: 11:52:19 AM



1in IF THIS MEASUREMENT DOES NOT MATCH WHAT IS SHOWN, THE SHEET SIZE HAS BEEN MODIFIED FROM ANS18

wsp **GOLDER**

golder.com